

## BMC-2 FOUNDATION DETAIL

NO SCALE

FILE: CP-E-1.DWG



CITY OF  
**CENTRAL POINT**  
PUBLIC WORKS DEPARTMENT

UNIFORM STANDARDS  
FOR  
PUBLIC WORKS CONSTRUCTION

**BMC-2 FOUNDATION**

REVISED DATE

2/05/2016

**E-1**

DRAWING No.

**BMC-2 CABINET DETAILS**

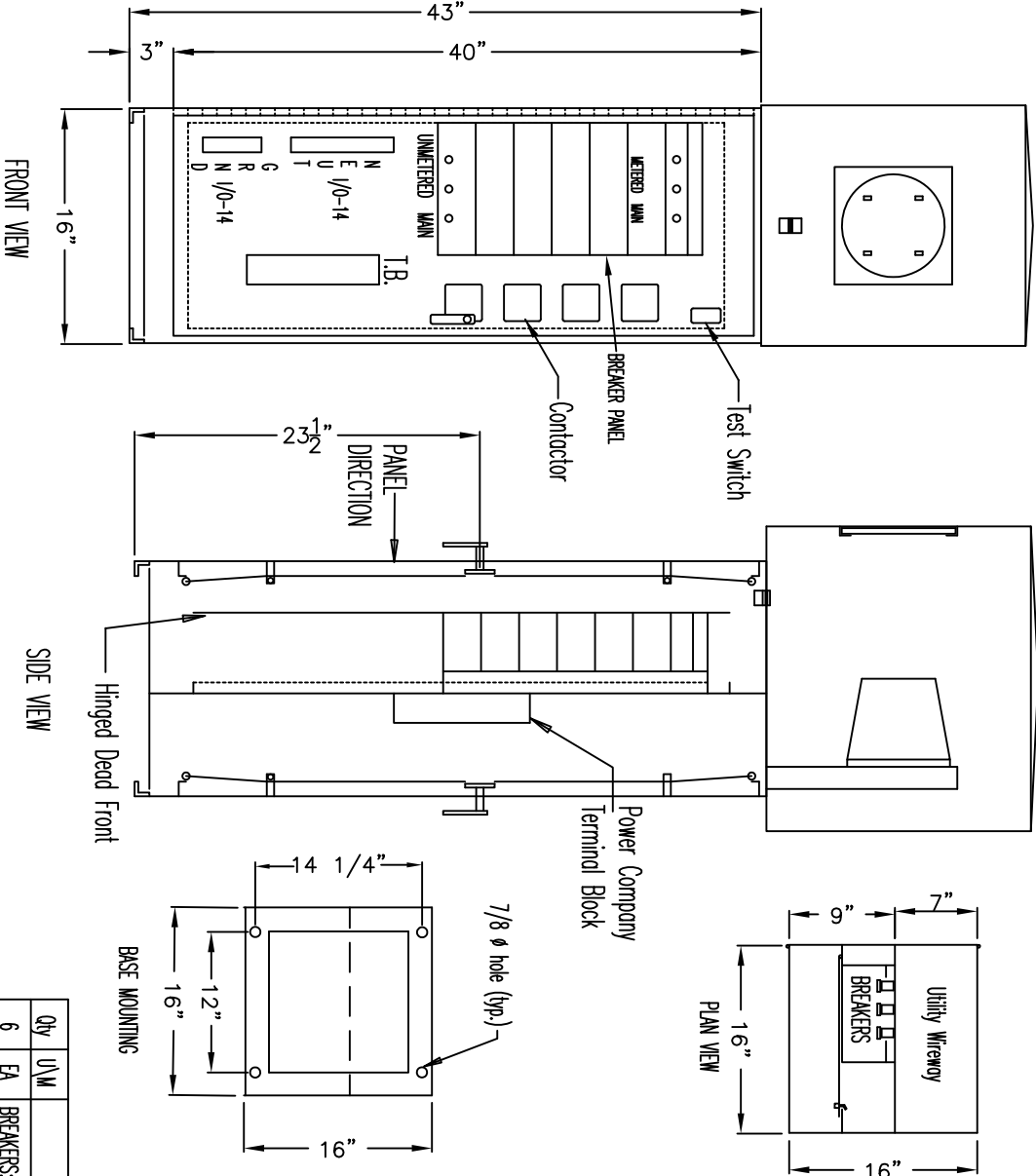
UNIFORM STANDARDS  
FOR  
PUBLIC WORKS CONSTRUCTION

REVISED DATE  
2/05/2016

E-2

DRAWING No.

FILE: CP-E-2.DWG



DETAILS

NEMA 3R CABINET

UL "PANEL BOARD SUITABLE FOR SERVICE EQUIPMENT"

ALL COPPER BUS, SILVER PLATED 130A

MAIN BREAKER:

GE TYPE TED  
60 A 2 POLE 18,000 AC @ 480 V  
60 A 1 POLE 14,000 AC @ 277 V  
OR AS NOTED ON PLANS

SERVICE VOLTAGE: 120 / 240 V 1Ø

CIRCUIT BREAKERS:

GE TYPE TED AMPERAGES AS NOTED  
480 V 2 P IN BREAKER PANEL  
277 V 1 P

CONTACTORS: GE TYPE CR360L 30 A 2 P 120 V COIL

TEST SWITCH: HUBBELL 1221 20 A 120/277 V 1 P

METER BASE: CIRCLE AW 50250 200 AMP 4 AW  
WITH MANUAL BRASS 600 V RATED


BILL OF MATERIALS

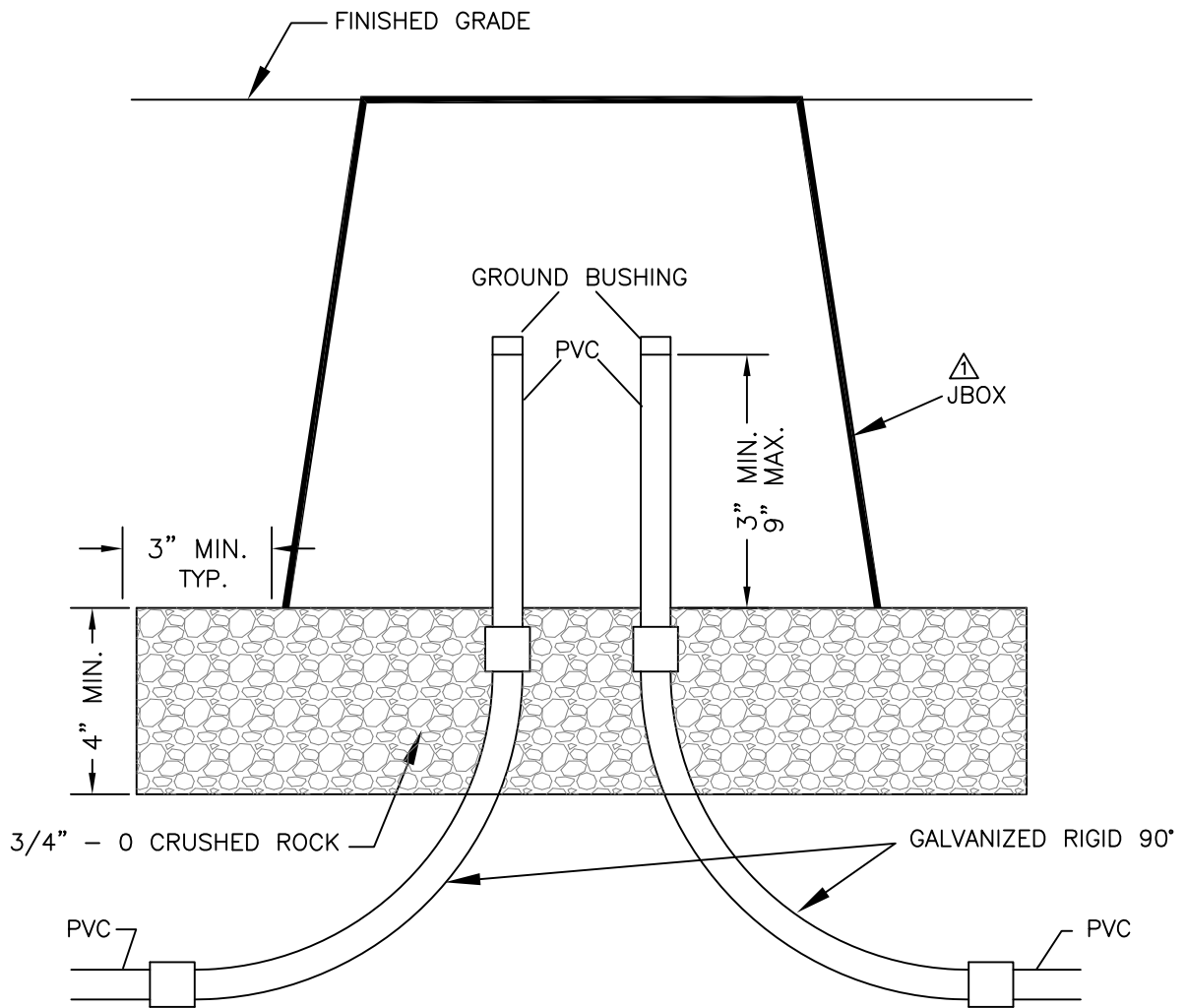
Qty	U/M	Description
6	EA	BREAKERS: GE TYPE TED 14K A/C @ 277V, AMPS AS NOTED ABOVE
1	EA	200-AMP RATED COPPER NEUTRAL
1	EA	SOLID COPPER GROUND
1	EA	TERMINAL BLOCK: MARATHON 1206
3	EA	CONTACTOR: GE CR360L, 30 AMP, 2-P, 120V COIL
1	EA	TEST SWITCH: HUBBELL 1221, 20-AMP, 1-P, 120/277V

SPECS: BASE MOUNTED CABINET – BMC2

- 1 – BOX AND DEAD FRONT – 14 GAUGE 304, #4 STAINLESS STEEL, ALL SEAMS ARE WELDED. THE CABINET HAS A 1” OUTWARD FACING FLANGE ALL THE WAY AROUND BOTH OPENINGS. THE FLANGE IS GASKETED WITH A NEMA 4 UL RATED CLOSED CELL NEOPRENE SPONGE GASKET. THE TOP OF THE CABINET HAS A HINGED TOP COVER (see item 3 below), THAT OVERLAPS THE TOP OF THE CABINET ON THE SIDES AND THE REAR. THE FRONT RESTS ON A DRIP SHIELD ABOVE THE FRONT DOOR. THE WIRING ACCESS TO THE CABINET IS THROUGH THE BOTTOM, WHICH HAS AN INTERNAL STAINLESS STEEL ANGLE MOUNTING FRAME WELDED IN PLACE AND A REMOVABLE ACCESS PLATE.
  
- 2 – DOORS – MADE FROM 14 GAUGE 304, #4 STAINLESS STEEL. THE DOORS ARE FABRICATED WITH A 3/4” RETURN AND ARE SIZED TO FIT OVER THE CABINET OPENING WITH THE INSIDE SURFACE OF THE DOOR SEALING AGAINST THE GASKET. THE DOORS ARE HELD IN PLACE WITH A FULL LENGTH STAINLESS STEEL PIANO HINGE, A PADLOCKING HANDLE AND A 3 POINT LATCHING MECHANISM.
  
- 3 – HINGED TOP COVER – MADE FROM 12 GAUGE 304, #4 STAINLESS STEEL. THE FRONT OF THE COVER HAS A POLYCARBONATE VIEWING WINDOW THAT IS ATTACHED WITH TAMPER RESISTANT SCREWS AND SEALED WITH A SILICONE CAULKING. THE COVER HAS A STAINLESS STEEL HINGE SPOTWELDED TO THE REAR, BOTTOM EDGE WHICH IS THEN ATTACHED AT THE TOP REAR OF THE CABINET WITH TAMPER RESISTANT SCREWS.
  
- 4 – PAINT– AS APPROVED BY CITY ENGINEER. THE OUTSIDE OF THE CABINET IS PRIMED PAINTED WITH A VINYL WASH ETCHING PRIMER, THEN ONE COAT OF SHERWIN WILLIAMS SPRAYFILL PRIMER AND FINISHED WITH A TOPCOAT OF POLYURETHANE PAINT – CITY OF MEDFORD DARK BRONZE  
 OR  
 THE OUTSIDE OF THE CABINET IS ELECTROSTATICALLY POWDER COATED – CITY OF MEDFORD DARK BRONZE OR IF SPECIAL PROVISIONS REQUIRE – BLACK.  
 OR  
 LEFT AS EXPOSED STAINLESS STEEL.

FILE: CP-E-3.DWG

 <p>CITY OF <b>CENTRAL POINT</b> PUBLIC WORKS DEPARTMENT</p>	<p>UNIFORM STANDARDS FOR PUBLIC WORKS CONSTRUCTION</p>	<p>REVISED DATE</p>	<p><b>E-3</b></p>
	<p><b>BMC - 2 SPECIFICATIONS</b></p>	<p>2/05/2016</p>	



## JUNCTION BOX INSTALLATION

### NOTES:

- 1) ILLUMINATION CIRCUITS SHALL BE SPLICED ACCORDING TO CITY OF MEDFORD STANDARDS. IN LINE FUSE IS REQUIRED.
- 2) NUMBER OF CONDUITS SHALL BE ACCORDING TO ILLUMINATION PLANS.
- 3) DUCT SEAL IN ENDS OF CONDUIT.

- ① 4) PER NEC 250.80EX, END OF CONDUIT SHALL HAVE GROUND BUSHING IF LESS THAN 18" OF COVER FROM TOP OF GALVANIZED ELBOW.

FILE: CP-E-5.DWG



CITY OF  
**CENTRAL POINT**  
PUBLIC WORKS DEPARTMENT

UNIFORM STANDARDS  
FOR  
PUBLIC WORKS CONSTRUCTION

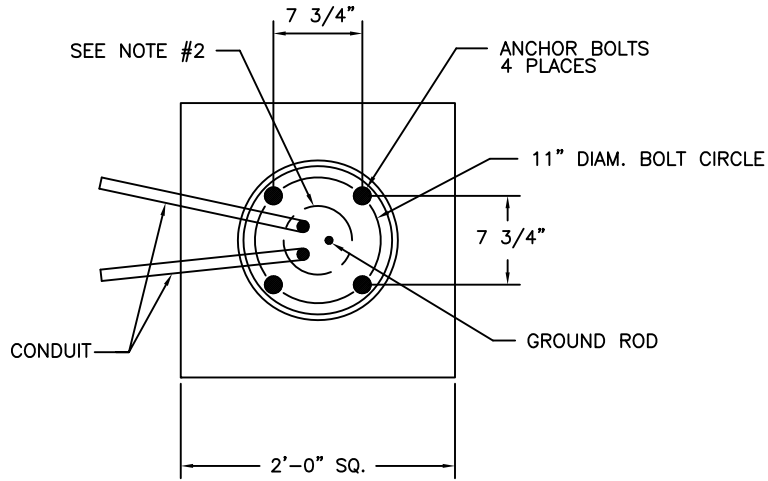
**JUNCTION BOX INSTALLATION**

REVISED DATE

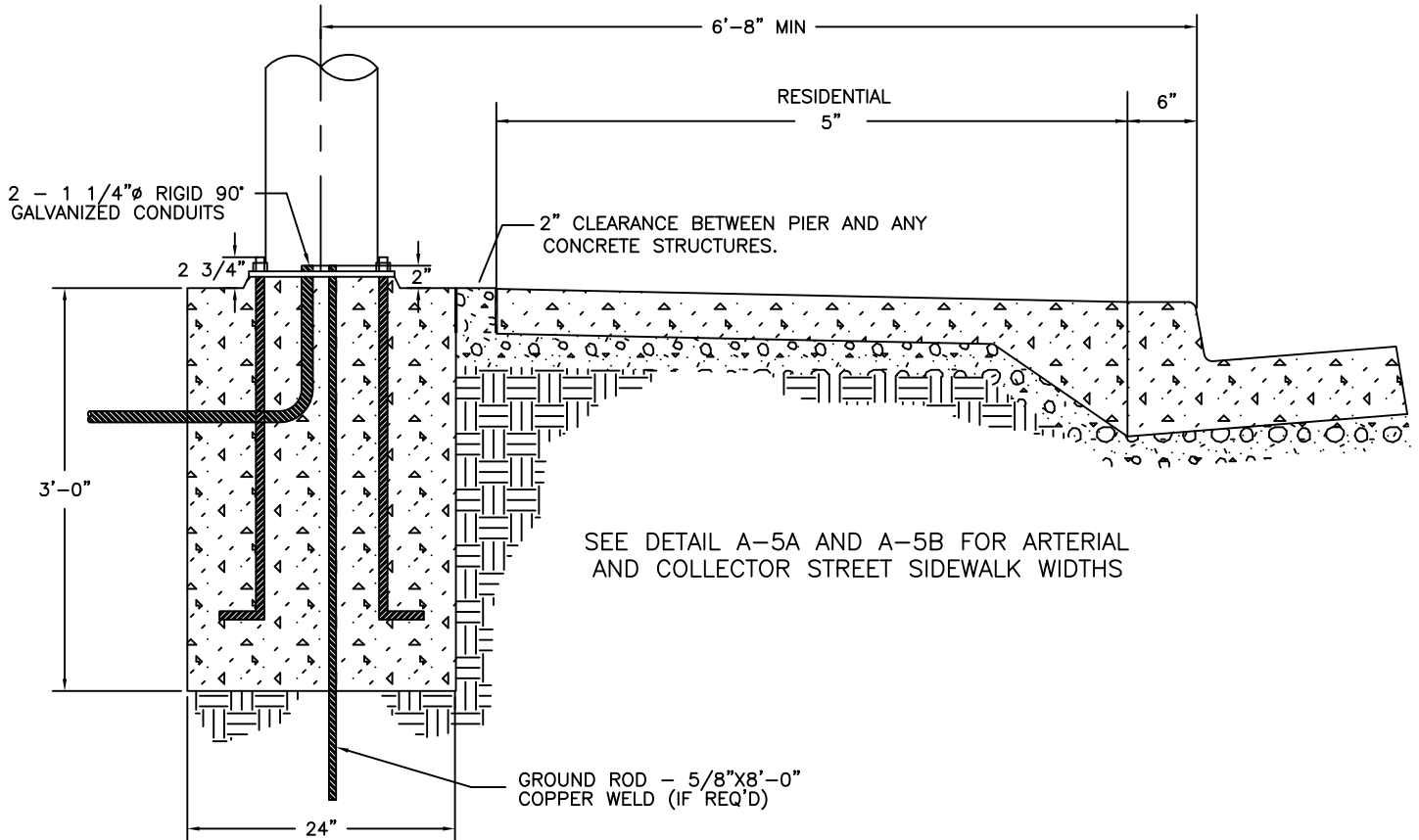
2/05/2016

**E-5**

DRAWING No.



### BASE PLATE DETAIL



### COBRA HEAD STREETLIGHT FOUNDATION

#### NOTES

1. ALL CONCRETE SHALL MEET THE REQUIREMENTS OF SECTION 930.00.00 PORTLAND CEMENT CONCRETE (PCC)
2. PLASTIC CONDUITS AND GROUND ROD MUST BE WITHIN A 3" RADIUS OF THE CENTER OF THE BOLT CIRCLE.
3. CONDUIT, GROUND ROD, ANCHOR BOLTS, AND BOLT TEMPLATE FURNISHED BY PP&L.

FILE: CP-SL-01.DWG



CITY OF  
**CENTRAL POINT**  
PUBLIC WORKS DEPARTMENT

UNIFORM STANDARDS  
FOR  
PUBLIC WORKS CONSTRUCTION

COBRA HEAD STREETLIGHT FOUNDATION

REVISED DATE

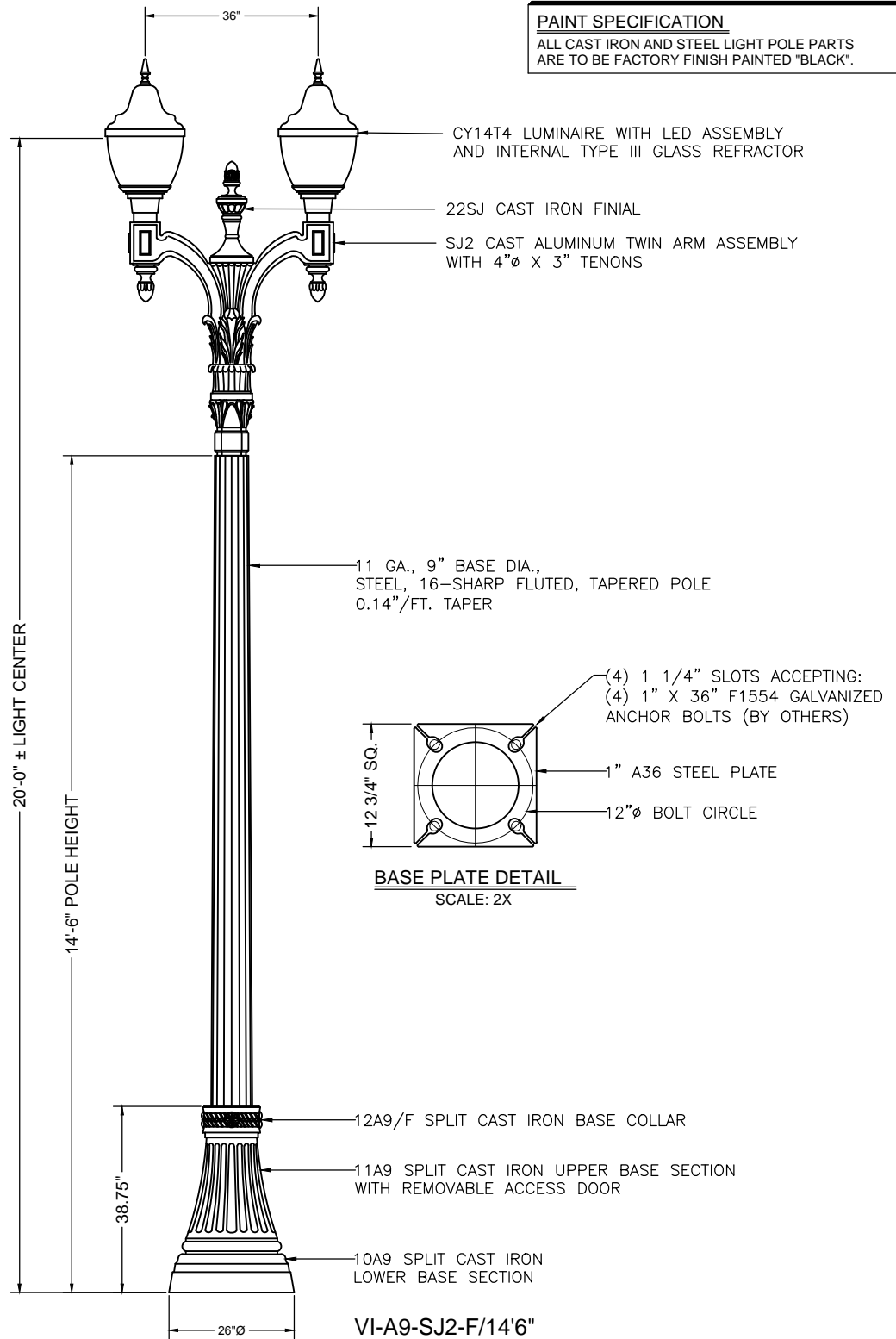
10/28/2016

SL-1

DRAWING No.

**PAIN T SPECIFICATION**

ALL CAST IRON AND STEEL LIGHT POLE PARTS ARE TO BE FACTORY FINISH PAINTED "BLACK".



## Arterial TOD Decorative Street Light Pole

NTS

FILE: CP-SL-2.DWG



CITY OF  
**CENTRAL POINT**  
PUBLIC WORKS DEPARTMENT

UNIFORM STANDARDS  
FOR  
PUBLIC WORKS CONSTRUCTION

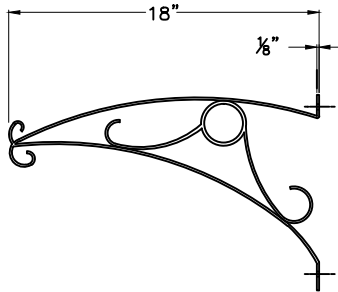
Arterial TOD Decorative Street Light Pole

REVISED DATE

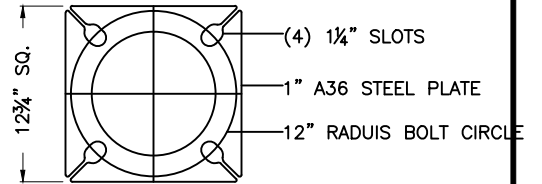
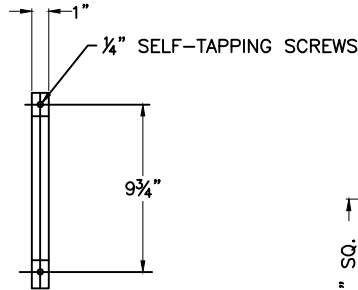
10/22/2018

**SL-2**

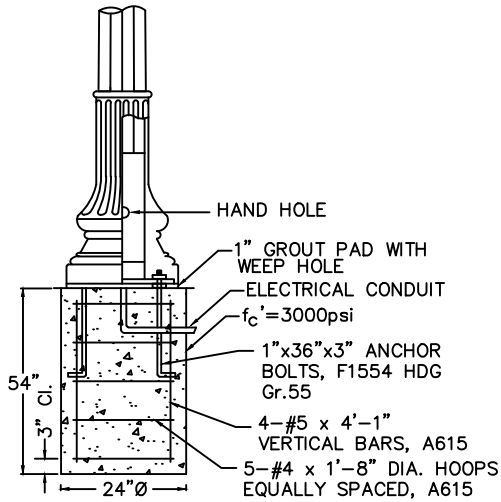
DRAWING No.



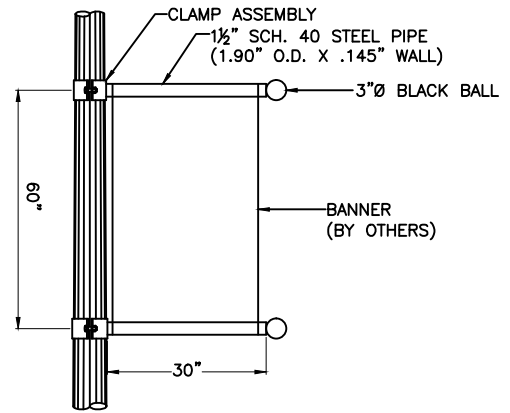
HANGING FLOWER BASKET BRACKET



BASE PLATE ASSEMBLY



HDG=Hot Dipped Galvanized  
ANCHOR BASE ASSEMBLY



SINGLE BANNER ARM ARRANGEMENT

## Arterial Foundation, Banner, Basket

NTS

FILE: CP-SL-2A.DWG



CITY OF  
**CENTRAL POINT**  
PUBLIC WORKS DEPARTMENT

UNIFORM STANDARDS  
FOR  
PUBLIC WORKS CONSTRUCTION

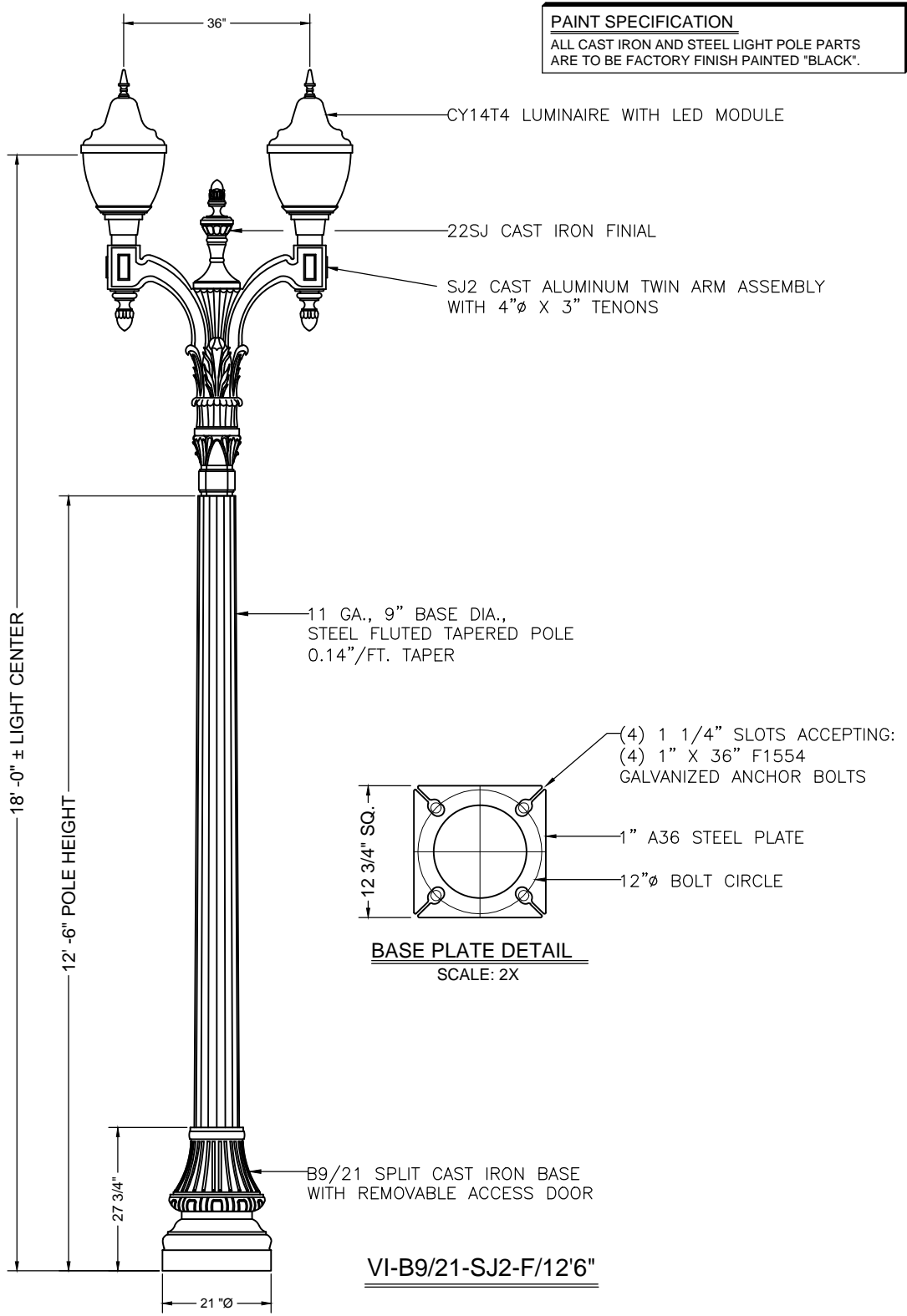
Arterial Foundation, Banner, Basket

REVISED DATE  
10/31/2018

**SL-2A**

DRAWING No.

**PAINT SPECIFICATION**  
 ALL CAST IRON AND STEEL LIGHT POLE PARTS  
 ARE TO BE FACTORY FINISH PAINTED "BLACK".



**Collector TOD Decorative Street Light Pole**

NTS

FILE: CP-SL-3.DWG

**CENTRAL POINT**  
 CITY OF  
**CENTRAL POINT**  
 PUBLIC WORKS DEPARTMENT

UNIFORM STANDARDS  
 FOR  
 PUBLIC WORKS CONSTRUCTION

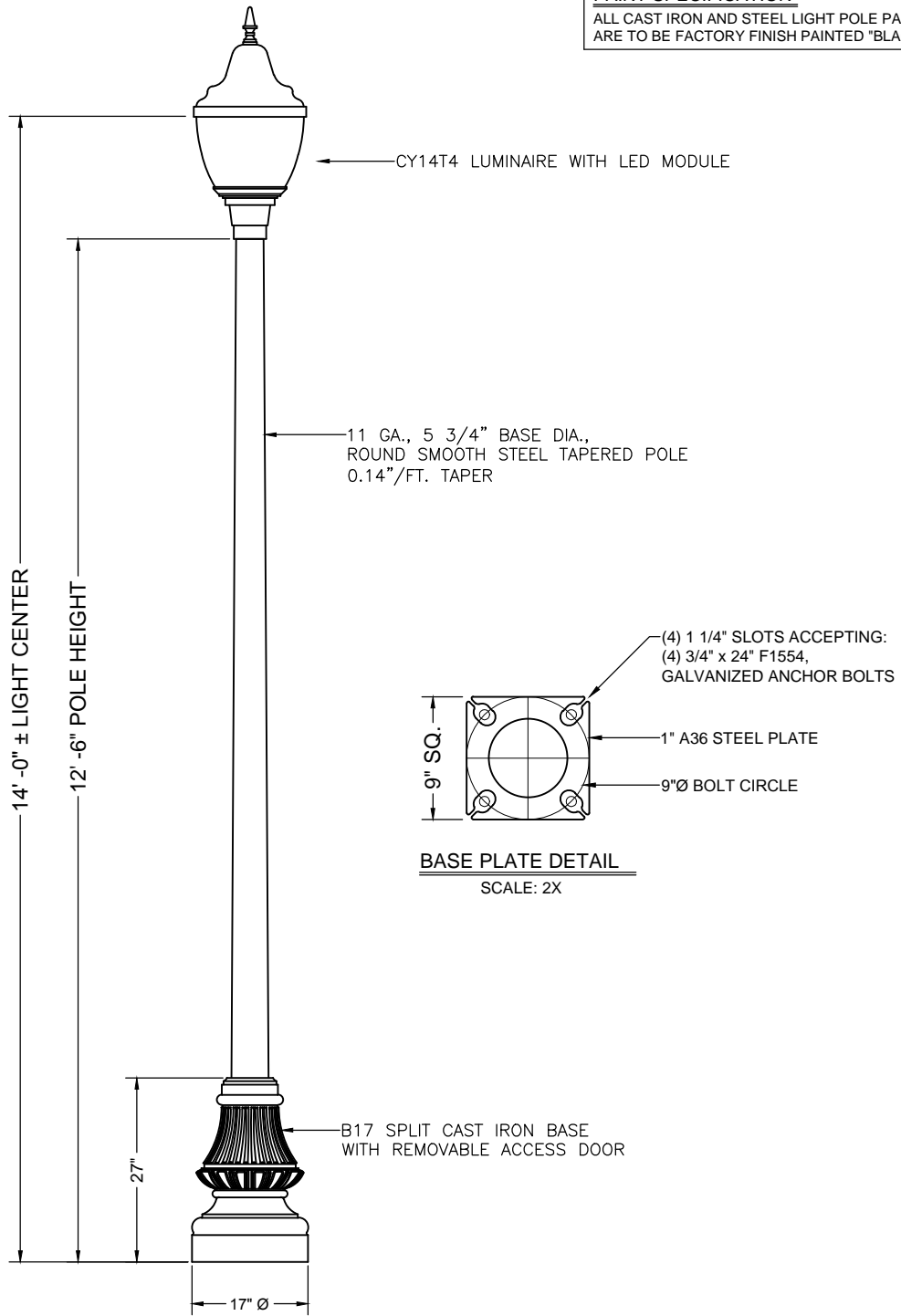
Collector TOD Decorative Street Light Pole

REVISED DATE
10/22/2018

**SL-3**  
 DRAWING No.



**PAINT SPECIFICATION**  
 ALL CAST IRON AND STEEL LIGHT POLE PARTS  
 ARE TO BE FACTORY FINISH PAINTED "BLACK".



VI-B17-1-S/12'6"

## Residential TOD Decorative Street Light Pole

NTS

FILE: CP-SL-4.DWG



CITY OF  
**CENTRAL POINT**  
 PUBLIC WORKS DEPARTMENT

UNIFORM STANDARDS  
 FOR  
 PUBLIC WORKS CONSTRUCTION

Residential TOD Decorative Street Light Pole

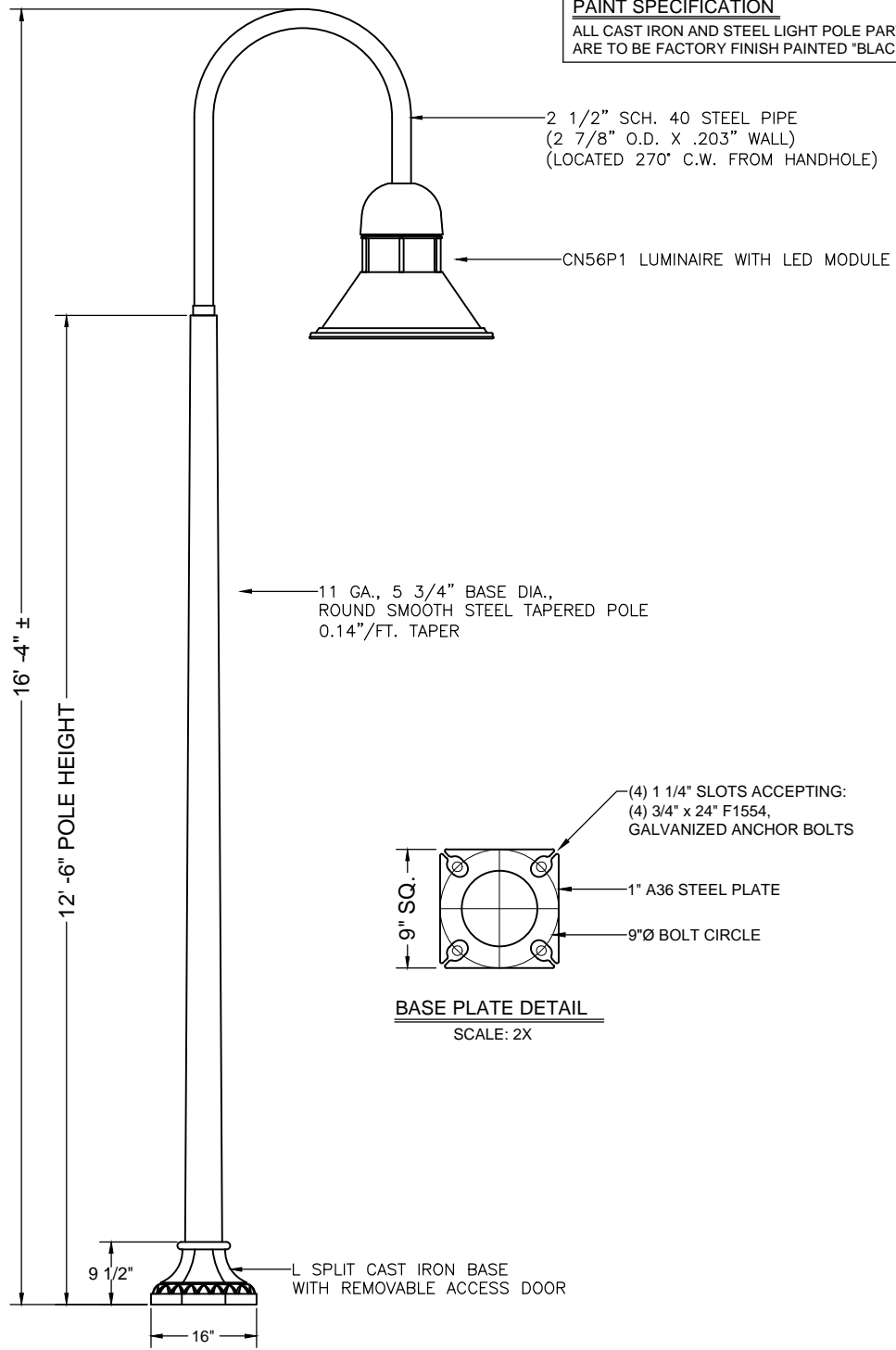
REVISED DATE

10/22/2018

**SL-4**

DRAWING No.

**PAINT SPECIFICATION**  
 ALL CAST IRON AND STEEL LIGHT POLE PARTS  
 ARE TO BE FACTORY FINISH PAINTED "BLACK".



VI-L-J1-S/12'6"

## Alley TOD Decorative Street Light Pole

NTS

FILE: CP-SL-5.DWG



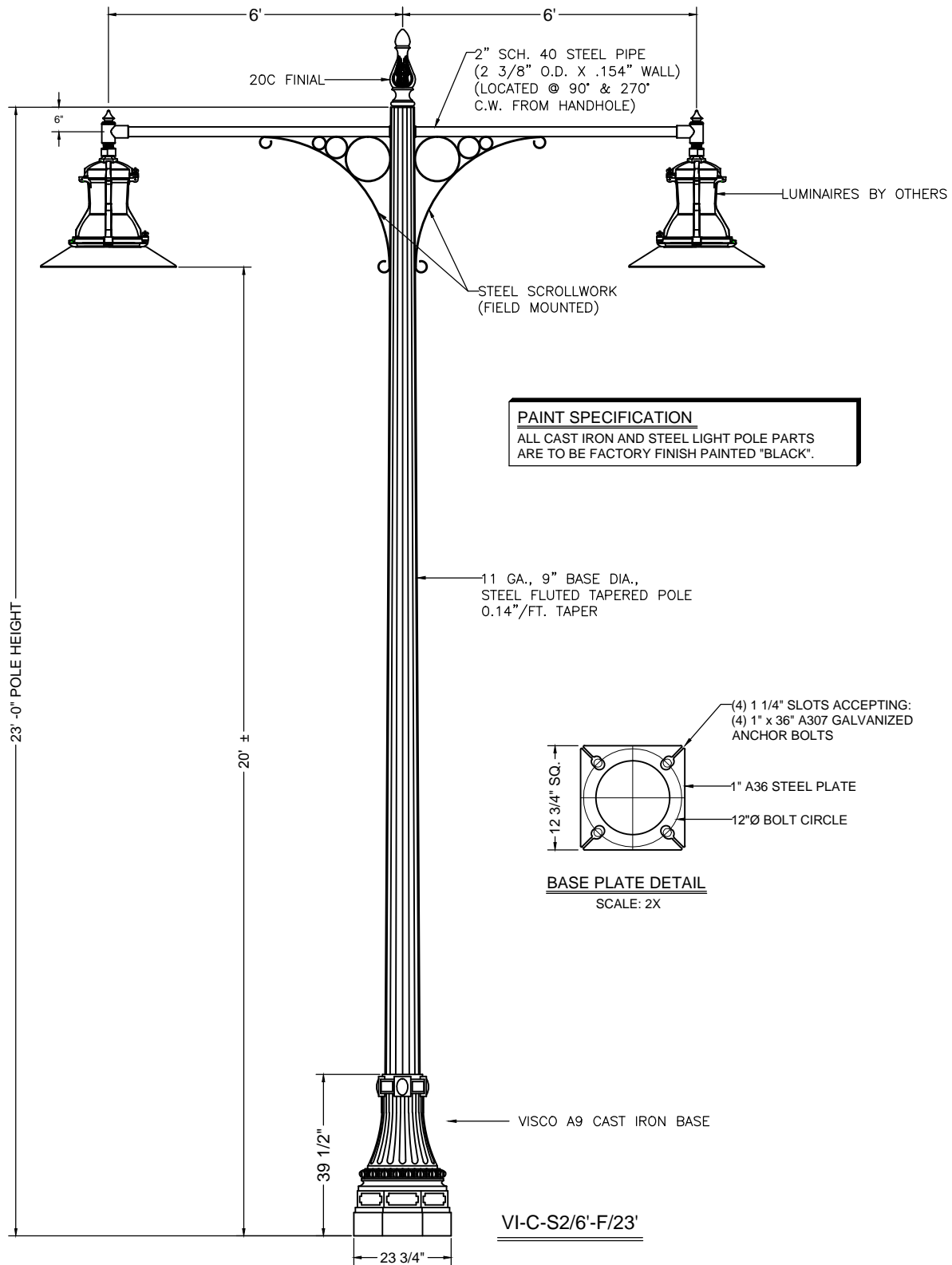
CITY OF  
**CENTRAL POINT**  
 PUBLIC WORKS DEPARTMENT

UNIFORM STANDARDS  
 FOR  
 PUBLIC WORKS CONSTRUCTION

Residential TOD Decorative Street Light Pole

REVISED DATE  
 10/22/2018

**SL-5**  
 DRAWING No.



## Parking Lot Decorative Double Street Light Pole

NTS

FILE: CP-SL-6.DWG



CITY OF  
**CENTRAL POINT**  
PUBLIC WORKS DEPARTMENT

UNIFORM STANDARDS  
FOR  
PUBLIC WORKS CONSTRUCTION

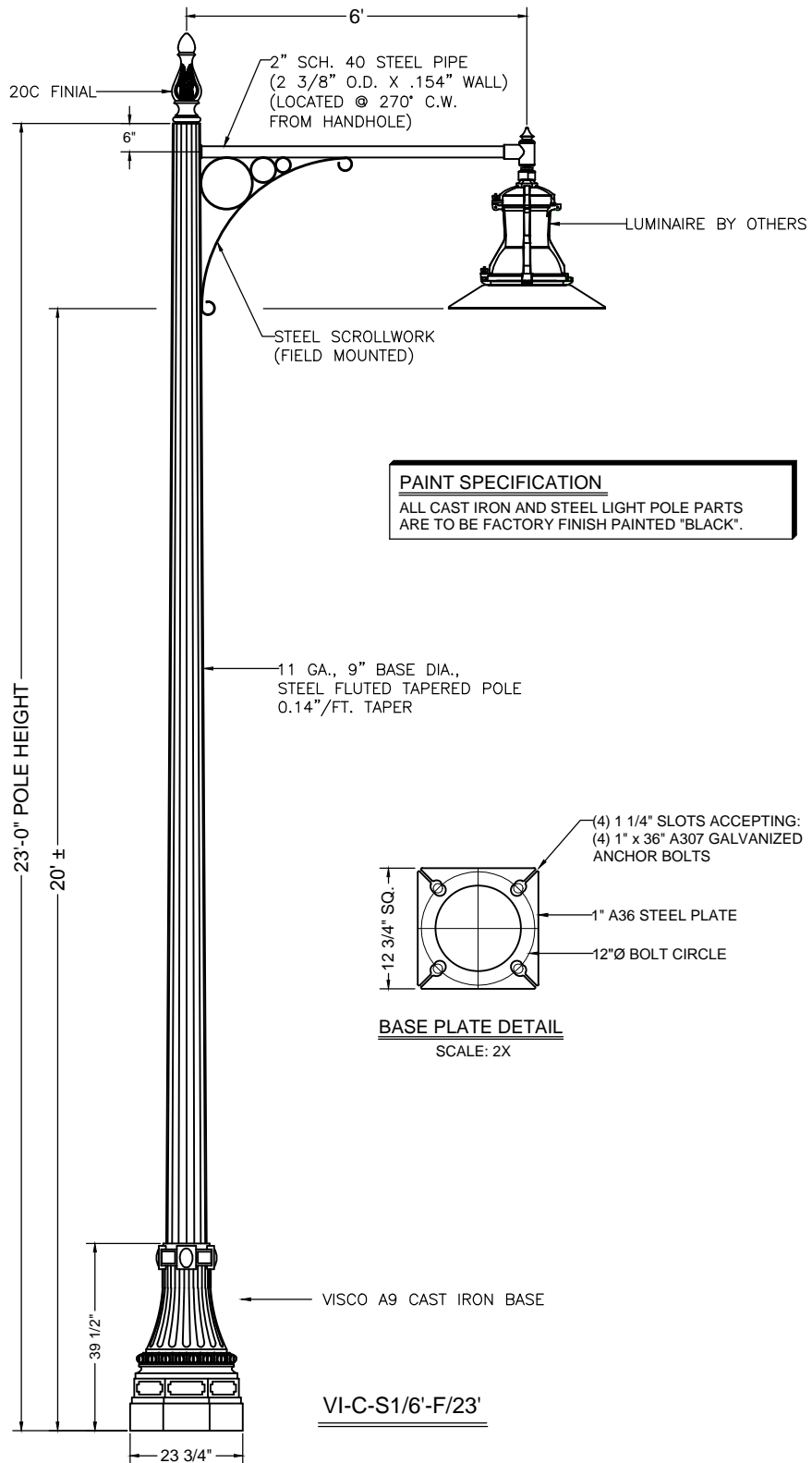
Parking Lot Decorative Double Street Light Pole

REVISED DATE

10/22/2018

**SL-6**

DRAWING No.



**PAINT SPECIFICATION**  
ALL CAST IRON AND STEEL LIGHT POLE PARTS  
ARE TO BE FACTORY FINISH PAINTED "BLACK".

## Parking Lot Decorative Single Street Light Pole

NTS

FILE: CP-SL-7.DWG



CITY OF  
**CENTRAL POINT**  
PUBLIC WORKS DEPARTMENT

UNIFORM STANDARDS  
FOR  
PUBLIC WORKS CONSTRUCTION

Parking Lot Decorative Single Street Light Pole

REVISED DATE

10/22/2018

**SL-7**

DRAWING No.