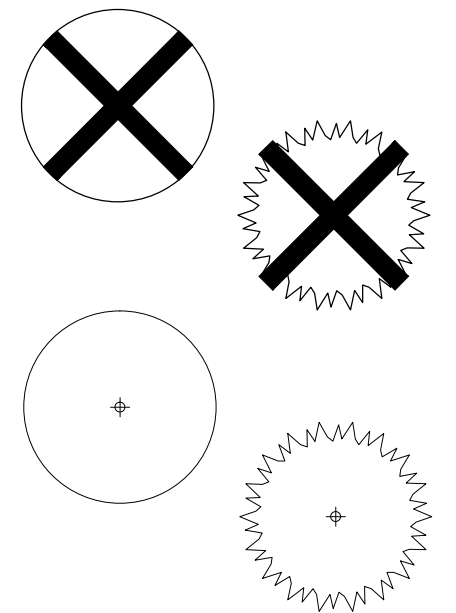


GENERAL NOTES

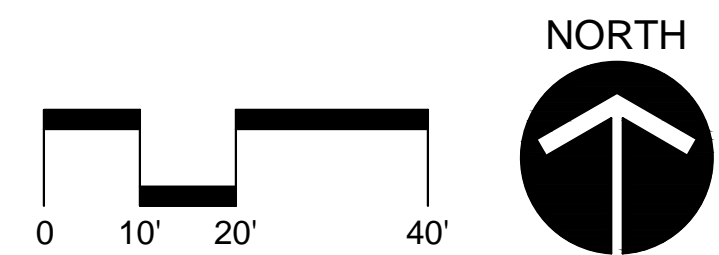
- A. Topographic survey provided by City of Central Point.
- B. Trees to be removed will be clearly marked in the field prior to beginning construction.
- C. Contractor shall work with the city arborist to establish Tree Root Protection Zones per ANSI 300 part 5. Contractor shall inform city parks staff and request their presence on site before trenching or cutting within the dripline of any existing tree to remain. When roots 2" diameter or larger are encountered, the contractor shall inform the city parks staff and request the presence of the city arborist. Roots 2" diameter and larger shall be exposed and cut by, or under the direct supervision of, the city arborist.

LEGEND



EXISTING TREES TO BE REMOVED

EXISTING TREES TO REMAIN



CoveyPardee
LANDSCAPE ARCHITECTS
201 EAST MAIN, No. 8
ASHLAND, OR 97520
503.253.0000
info@coveypardee.com

SKYRMAN ARBORETUM
Highway 99
Central Point, Oregon 97520

| NO. | ISSUE/REV. | DATE |
|-----|------------|------------|
| 1 | 90% CD | 2016.03.08 |
| 2 | BID SET | 2016.03.24 |

SHEET TITLE
TREE PROTECTION & REMOVAL PLAN

DATE 24 MAR 2016
SCALE 1"=10'
DRAWN ADP
JOB SKYRMAN

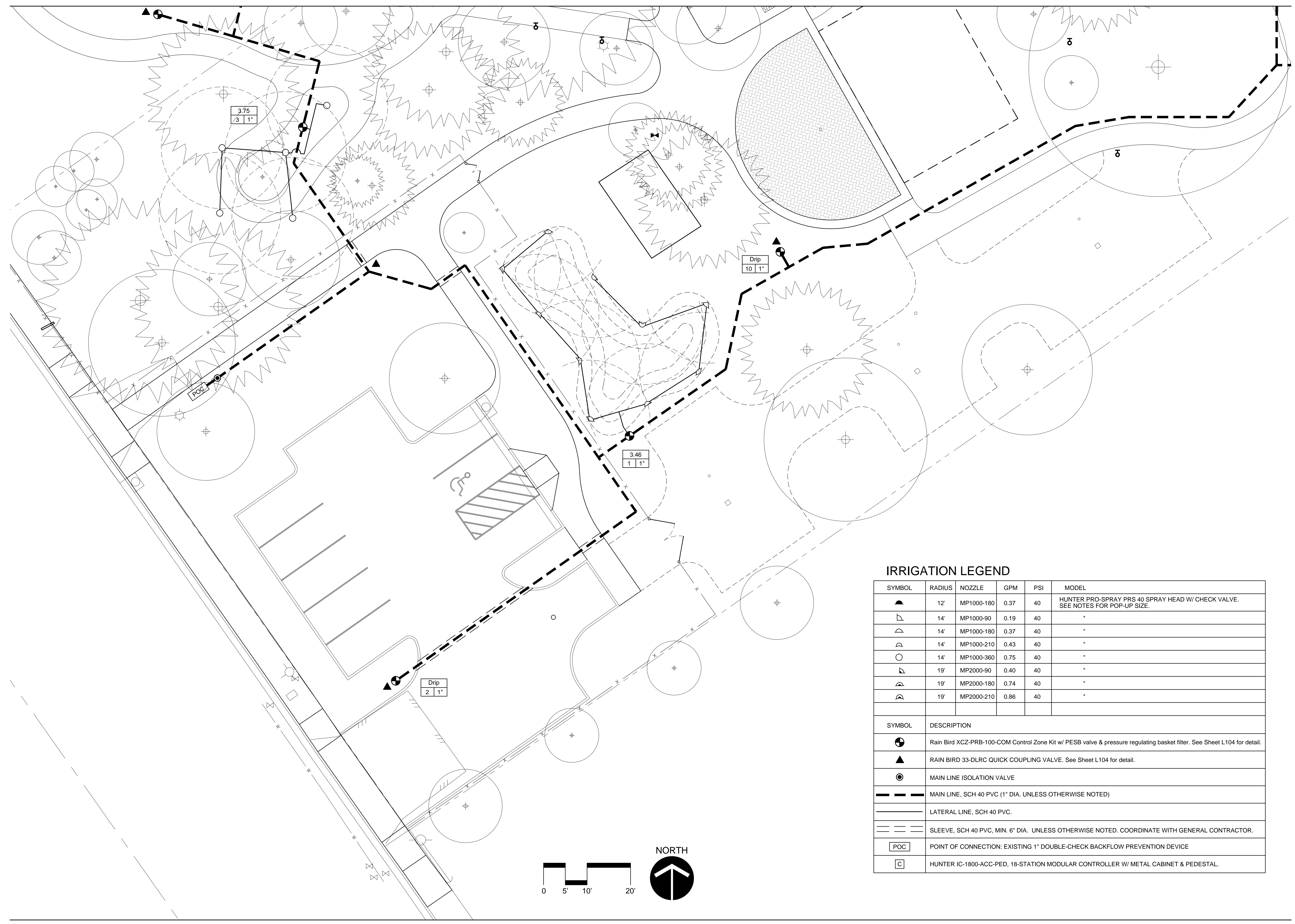
SHEET
L001
FILE 1514

| NO. | ISSUE/REV. | DATE |
|-----|------------|------------|
| 1 | 90% CD | 2016.03.08 |
| 2 | BID SET | 2016.03.24 |

SHEET TITLE
 IRRIGATION PLAN

DATE 24 MAR 2016
 SCALE 1"=10'
 DRAWN GTC
 JOB SKYRMAN

SHEET
L101
 FILE 1514



IRRIGATION LEGEND

| SYMBOL | RADIUS | NOZZLE | GPM | PSI | MODEL |
|--------|--------|------------|------|-----|---|
| | 12' | MP1000-180 | 0.37 | 40 | HUNTER PRO-SPRAY PRS 40 SPRAY HEAD W/ CHECK VALVE. SEE NOTES FOR POP-UP SIZE. |
| | 14' | MP1000-90 | 0.19 | 40 | " |
| | 14' | MP1000-180 | 0.37 | 40 | " |
| | 14' | MP1000-210 | 0.43 | 40 | " |
| | 14' | MP1000-360 | 0.75 | 40 | " |
| | 19' | MP2000-90 | 0.40 | 40 | " |
| | 19' | MP2000-180 | 0.74 | 40 | " |
| | 19' | MP2000-210 | 0.86 | 40 | " |

| SYMBOL | DESCRIPTION |
|--------|--|
| | Rain Bird XCZ-PRB-100-COM Control Zone Kit w/ PESB valve & pressure regulating basket filter. See Sheet L104 for detail. |
| | RAIN BIRD 33-DLRC QUICK COUPLING VALVE. See Sheet L104 for detail. |
| | MAIN LINE ISOLATION VALVE |
| | MAIN LINE, SCH 40 PVC (1" DIA. UNLESS OTHERWISE NOTED) |
| | LATERAL LINE, SCH 40 PVC. |
| | SLEEVE, SCH 40 PVC, MIN. 6" DIA. UNLESS OTHERWISE NOTED. COORDINATE WITH GENERAL CONTRACTOR. |
| | POINT OF CONNECTION: EXISTING 1" DOUBLE-CHECK BACKFLOW PREVENTION DEVICE |
| | HUNTER IC-1800-ACC-PED, 18-STATION MODULAR CONTROLLER W/ METAL CABINET & PEDESTAL. |

SKYRMAN ARBORETUM

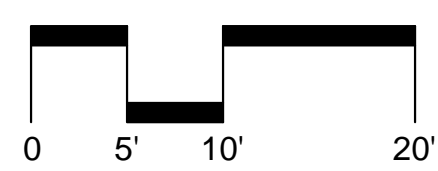
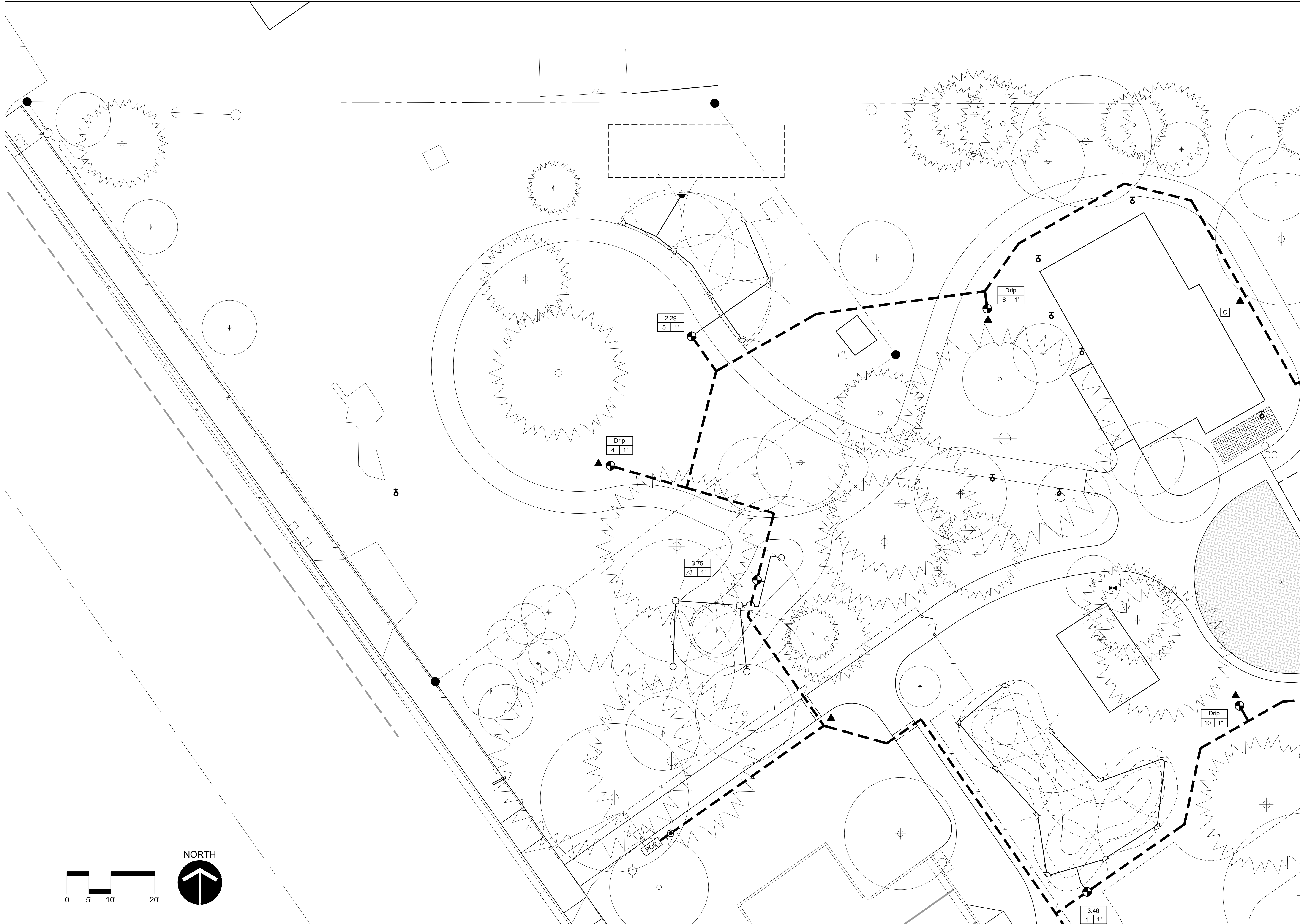
Highway 99
 Central Point, Oregon 97520

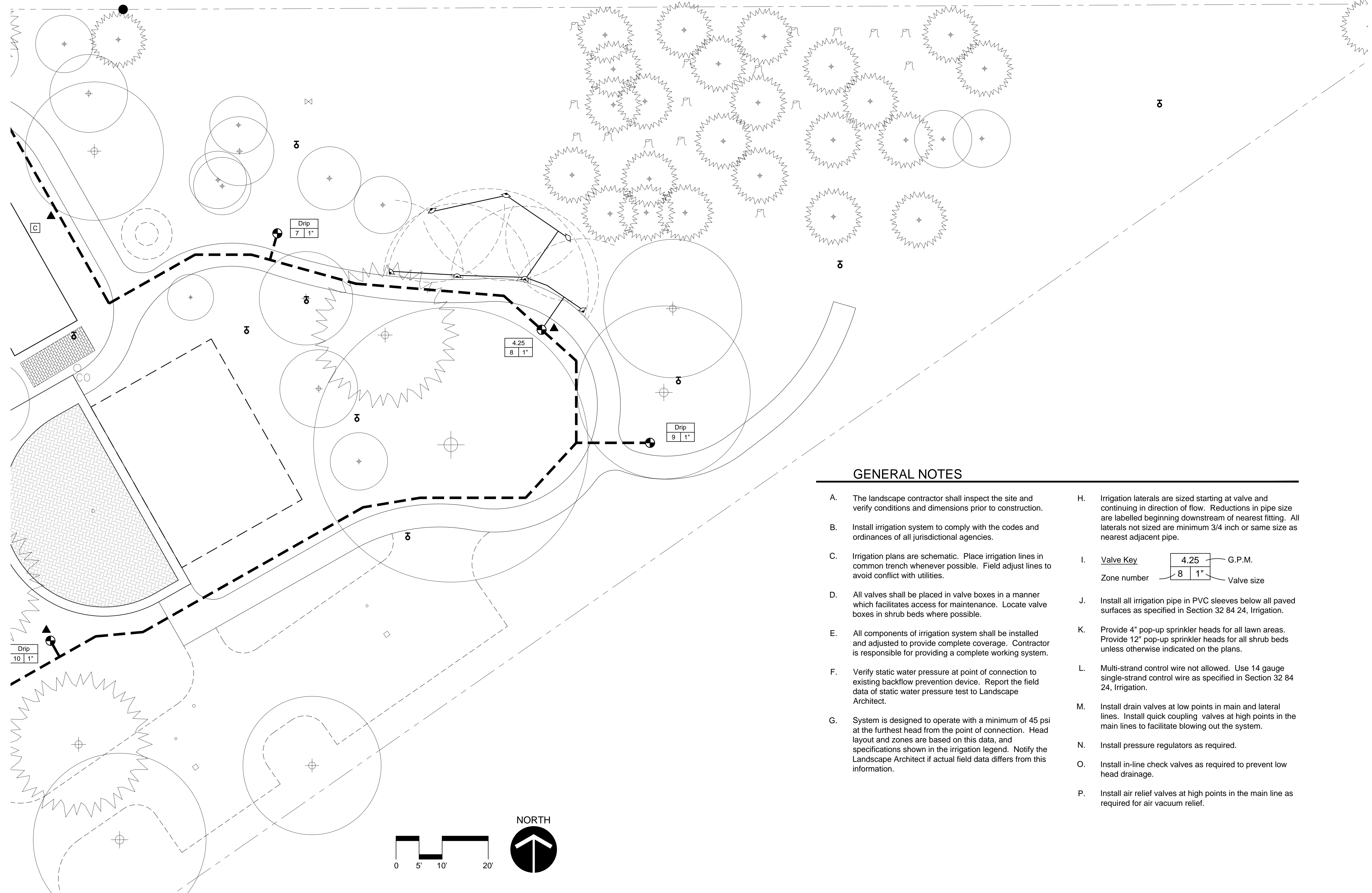
| NO. | ISSUE/REV. | DATE |
|-----|------------|------------|
| 1 | 90% CD | 2016.03.08 |
| 2 | BID SET | 2016.03.24 |

SHEET TITLE
 IRRIGATION PLAN

| | |
|-------|-------------|
| DATE | 24 MAR 2016 |
| SCALE | 1"=10' |
| DRAWN | GTC |
| JOB | SKYRMAN |

SHEET
L102
 FILE 1514





GENERAL NOTES

- A. The landscape contractor shall inspect the site and verify conditions and dimensions prior to construction.
- B. Install irrigation system to comply with the codes and ordinances of all jurisdictional agencies.
- C. Irrigation plans are schematic. Place irrigation lines in common trench whenever possible. Field adjust lines to avoid conflict with utilities.
- D. All valves shall be placed in valve boxes in a manner which facilitates access for maintenance. Locate valve boxes in shrub beds where possible.
- E. All components of irrigation system shall be installed and adjusted to provide complete coverage. Contractor is responsible for providing a complete working system.
- F. Verify static water pressure at point of connection to existing backflow prevention device. Report the field data of static water pressure test to Landscape Architect.
- G. System is designed to operate with a minimum of 45 psi at the furthest head from the point of connection. Head layout and zones are based on this data, and specifications shown in the irrigation legend. Notify the Landscape Architect if actual field data differs from this information.
- H. Irrigation laterals are sized starting at valve and continuing in direction of flow. Reductions in pipe size are labeled beginning downstream of nearest fitting. All laterals not sized are minimum 3/4 inch or same size as nearest adjacent pipe.
- I. **Valve Key**

| | |
|------|--------|
| 4.25 | G.P.M. |
| 8 | 1" |

 Zone number Valve size
- J. Install all irrigation pipe in PVC sleeves below all paved surfaces as specified in Section 32 84 24, Irrigation.
- K. Provide 4" pop-up sprinkler heads for all lawn areas. Provide 12" pop-up sprinkler heads for all shrub beds unless otherwise indicated on the plans.
- L. Multi-strand control wire not allowed. Use 14 gauge single-strand control wire as specified in Section 32 84 24, Irrigation.
- M. Install drain valves at low points in main and lateral lines. Install quick coupling valves at high points in the main lines to facilitate blowing out the system.
- N. Install pressure regulators as required.
- O. Install in-line check valves as required to prevent low head drainage.
- P. Install air relief valves at high points in the main line as required for air vacuum relief.

| NO. | ISSUE/REV. | DATE |
|-----|------------|------------|
| 1 | 90% CD | 2016.03.08 |
| 2 | BID SET | 2016.03.24 |

SHEET TITLE
IRRIGATION PLAN

DATE 24 MAR 2016

SCALE 1"=10'

DRAWN GTC

JOB SKYRMAN

SHEET

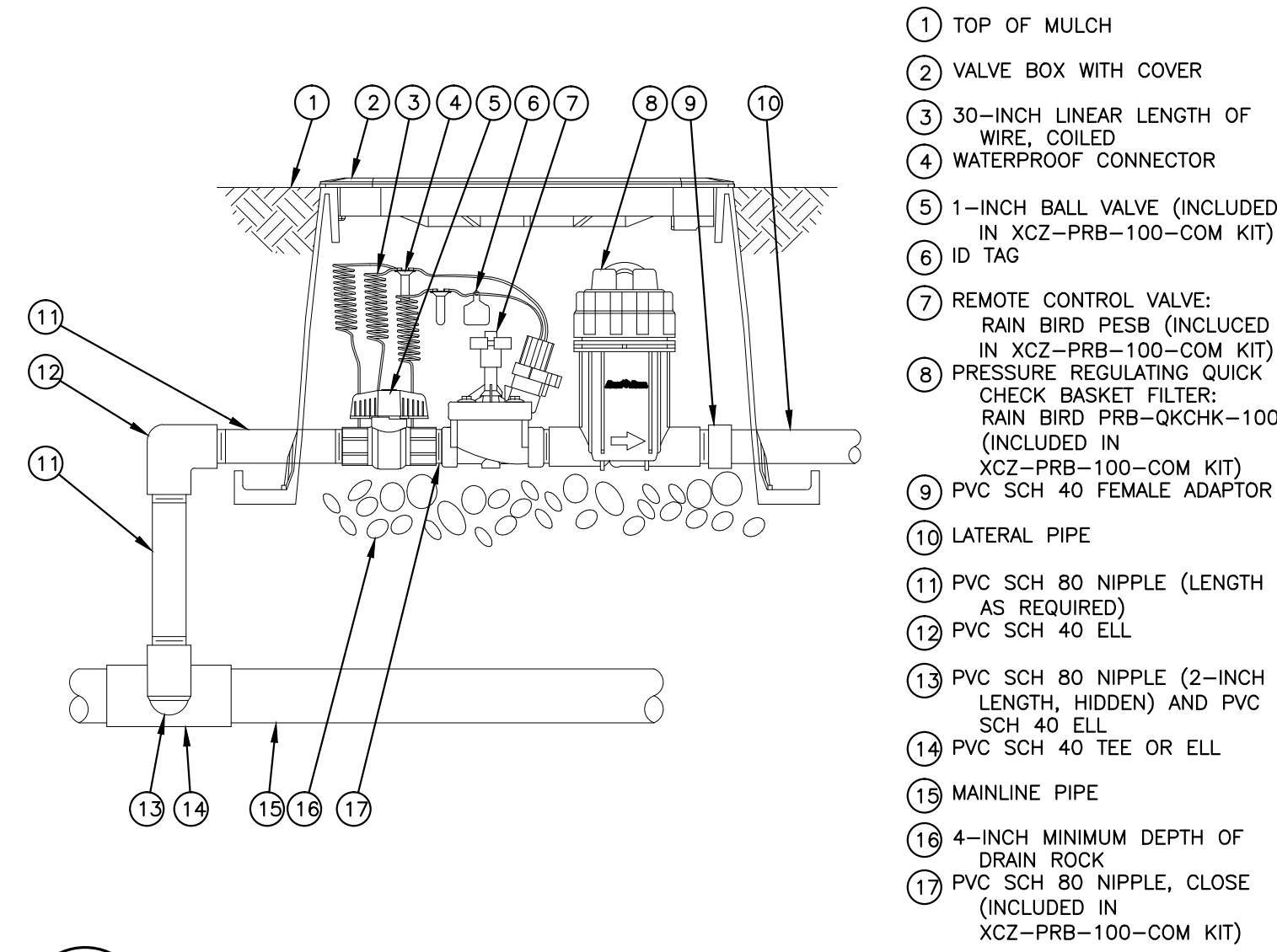
L103

FILE 1514

| NO. | ISSUE/REV. | DATE |
|-----|------------|------------|
| 1 | 90% CD | 2016.03.08 |
| 2 | BID SET | 2016.03.24 |

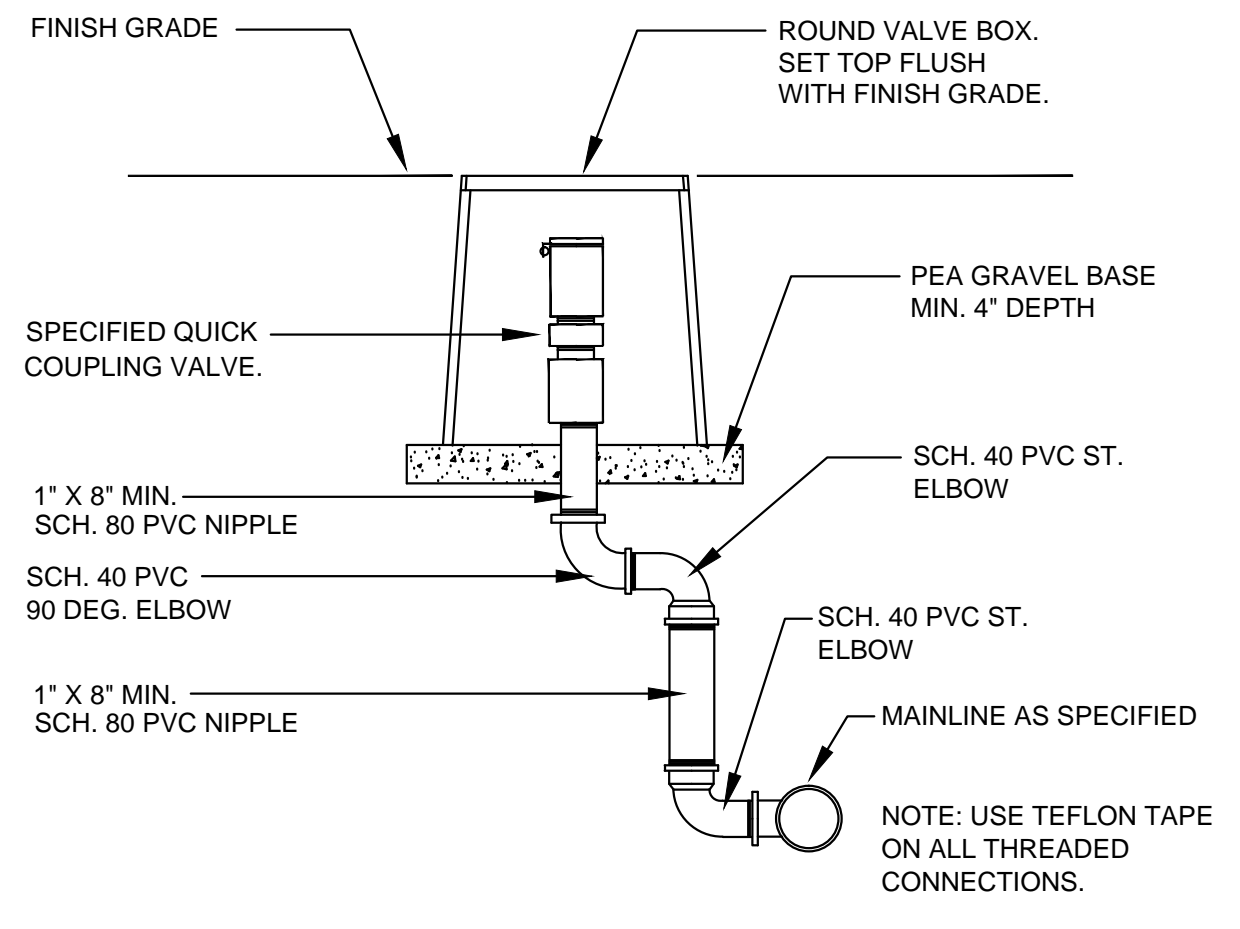
SHEET TITLE
**IRRIGATION
 DETAILS**

DATE 24 MAR 2016
 SCALE 1"=10'
 DRAWN GTC
 JOB SKYRMAN

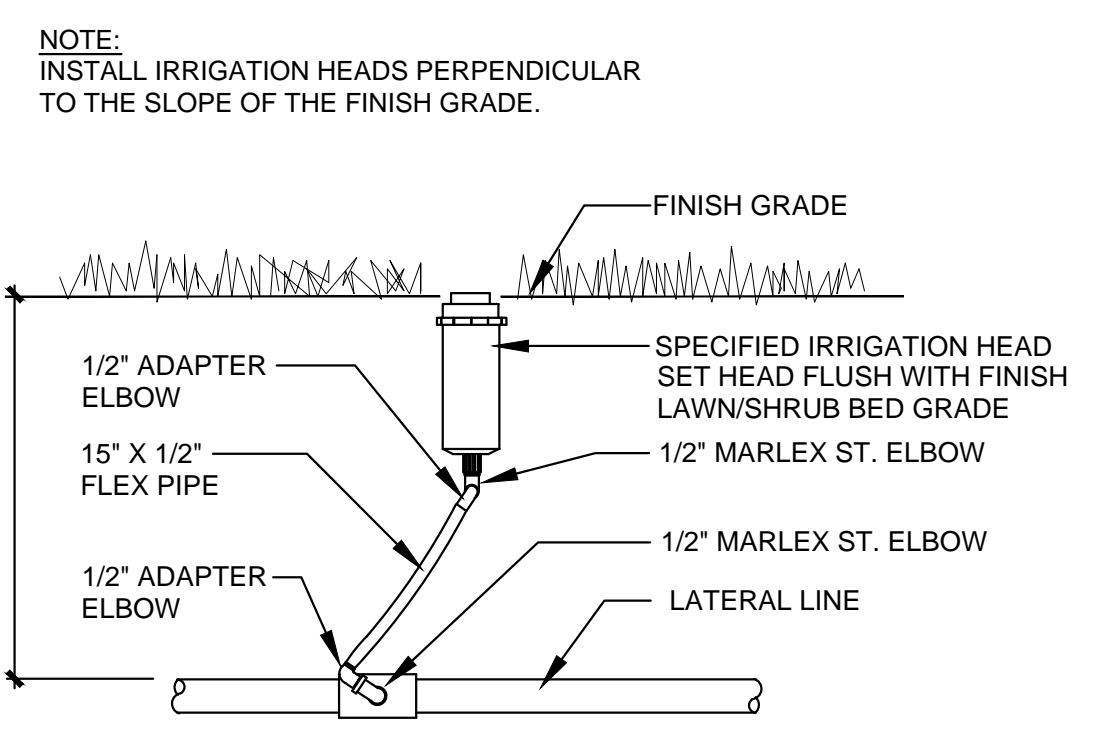


- ① TOP OF MULCH
- ② VALVE BOX WITH COVER
- ③ 30-INCH LINEAR LENGTH OF WIRE, COILED
- ④ WATERPROOF CONNECTOR
- ⑤ 1-INCH BALL VALVE (INCLUDED IN XCZ-PRB-100-COM KIT)
- ⑥ ID TAG
- ⑦ REMOTE CONTROL VALVE: RAIN BIRD PESB (INCLUDED IN XCZ-PRB-100-COM KIT)
- ⑧ PRESSURE REGULATING QUICK CHECK BASKET FILTER: RAIN BIRD PRB-QKCHK-100 (INCLUDED IN XCZ-PRB-100-COM KIT)
- ⑨ PVC SCH 40 FEMALE ADAPTOR
- ⑩ LATERAL PIPE
- ⑪ PVC SCH 80 NIPPLE (LENGTH AS REQUIRED)
- ⑫ PVC SCH 40 ELL
- ⑬ PVC SCH 80 NIPPLE (2-INCH LENGTH, HIDDEN) AND PVC SCH 40 ELL
- ⑭ PVC SCH 40 TEE OR ELL
- ⑮ MAINLINE PIPE
- ⑯ 4-INCH MINIMUM DEPTH OF DRAIN ROCK
- ⑰ PVC SCH 80 NIPPLE, CLOSE (INCLUDED IN XCZ-PRB-100-COM KIT)

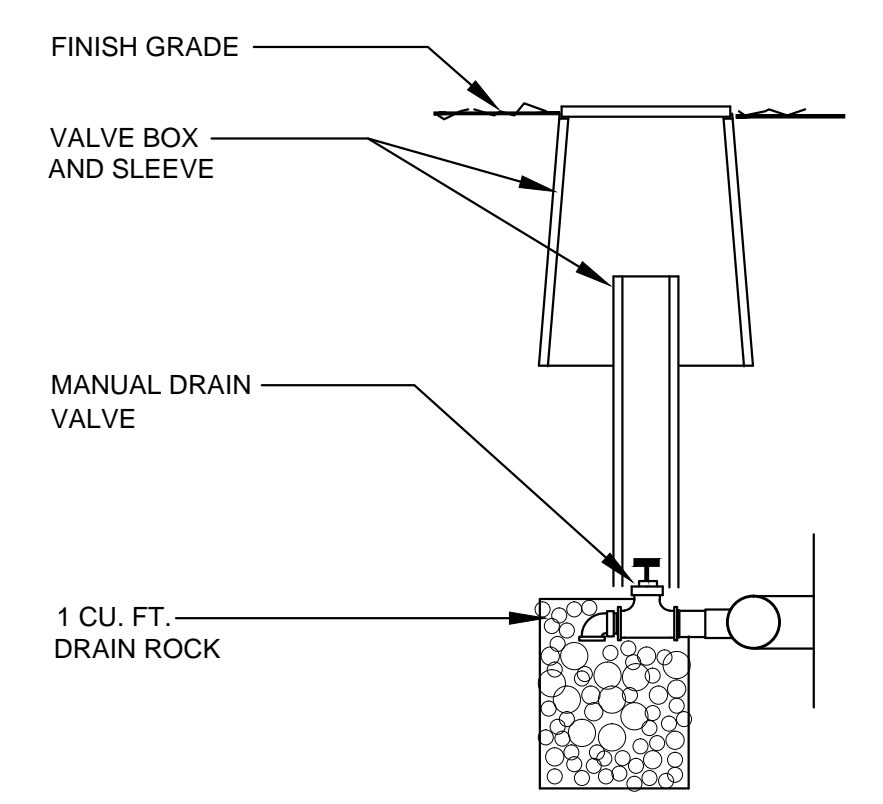
1 IRRIGATION CONTROL ZONE KIT
 - NOT TO SCALE



2 QUICK COUPLING VALVE
 - NOT TO SCALE



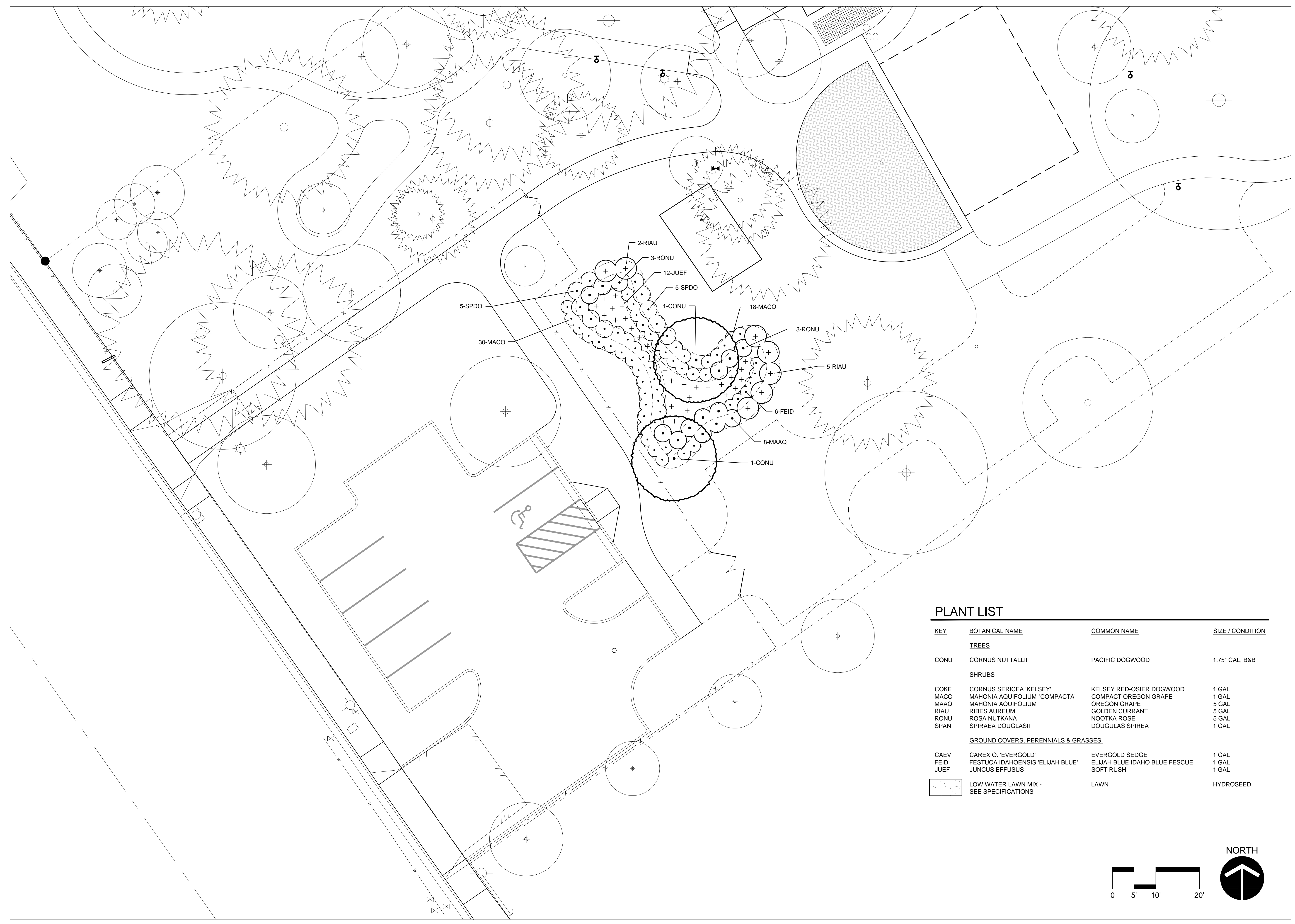
3 SPRAY HEAD ASSEMBLY
 - NOT TO SCALE



4 MANUAL DRAIN VALVE
 - NOT TO SCALE

SKYRMAN ARBORETUM

Highway 99
 Central Point, Oregon 97520



PLANT LIST

| KEY | BOTANICAL NAME | COMMON NAME | SIZE / CONDITION |
|--|---|-------------------------------|------------------|
| <u>TREES</u> | | | |
| CONU | CORNUS NUTTALLII | PACIFIC DOGWOOD | 1.75" CAL, B&B |
| <u>SHRUBS</u> | | | |
| COKE | CORNUS SERICEA 'KELSEY' | KELSEY RED-OSIER DOGWOOD | 1 GAL |
| MACO | MAHONIA AQUIFOLIUM 'COMPACTA' | COMPACT OREGON GRAPE | 1 GAL |
| MAAQ | MAHONIA AQUIFOLIUM | OREGON GRAPE | 5 GAL |
| RIAU | RIBES AUREUM | GOLDEN CURRANT | 5 GAL |
| RONU | ROSA NUTKANA | NOOTKA ROSE | 5 GAL |
| SPAN | SPIRAEA DOUGLASII | DOUGLAS SPIREA | 1 GAL |
| <u>GROUND COVERS, PERENNIALS & GRASSES</u> | | | |
| CAEV | CAREX O. 'EVERGOLD' | EVERGOLD SEDGE | 1 GAL |
| FEID | FESTUCA IDAHOENSIS 'ELIJAH BLUE' | ELIJAH BLUE IDAHO BLUE FESCUE | 1 GAL |
| JUEF | JUNCUS EFFUSUS | SOFT RUSH | 1 GAL |
| [Pattern] | LOW WATER LAWN MIX - SEE SPECIFICATIONS | LAWN | HYDROSEED |

| NO. | ISSUE/REV. | DATE |
|-----|------------|------------|
| 1 | 90% CD | 2016.03.08 |
| 2 | BID SET | 2016.03.24 |

SHEET TITLE
 PLANTING PLAN

DATE 24 MAR 2016

SCALE 1"=10'

DRAWN ADP

JOB SKYRMAN

SHEET

L201

FILE 1514

SKYRMAN ARBORETUM

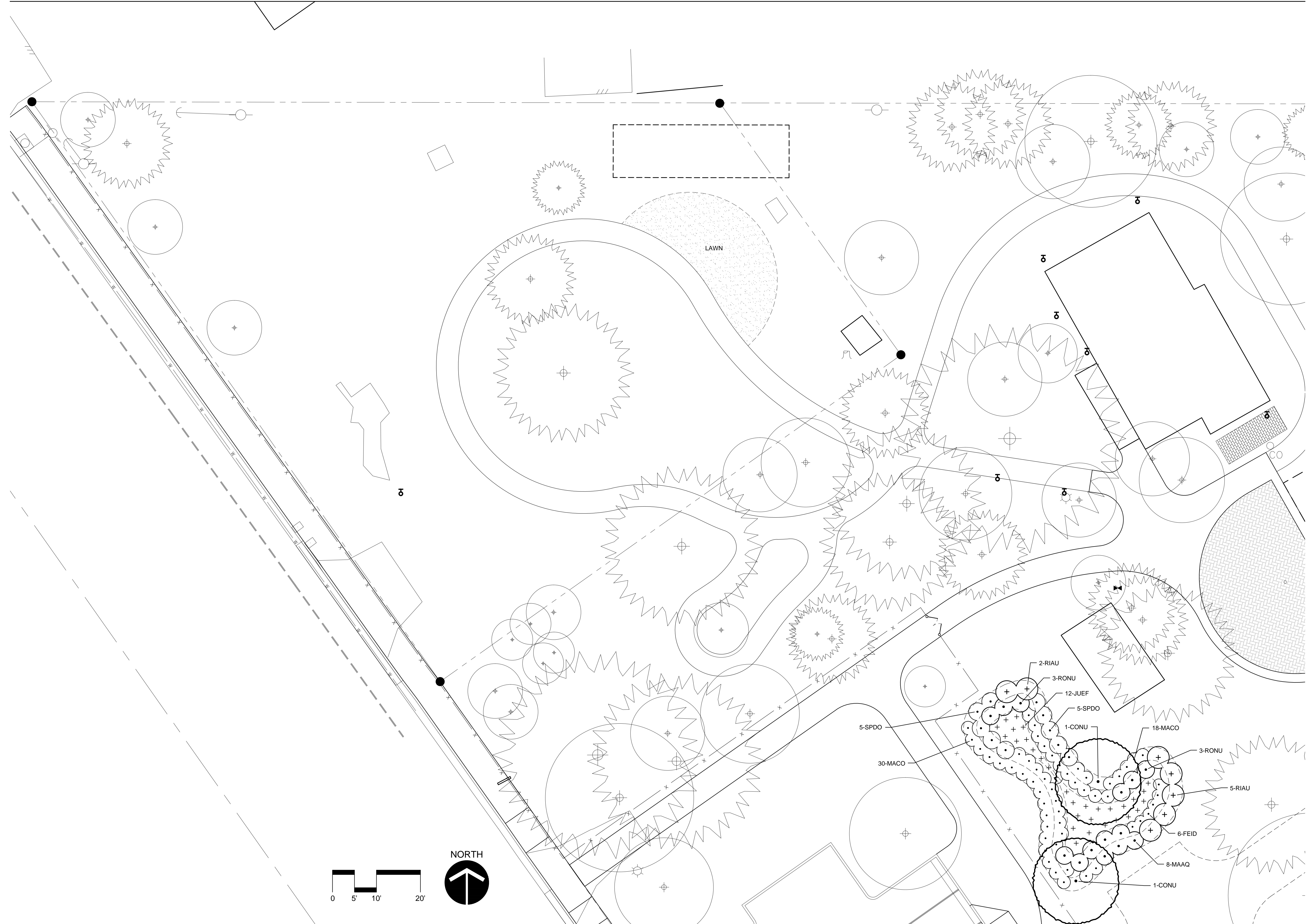
Highway 99
 Central Point, Oregon 97520

| NO. | ISSUE/REV. | DATE |
|-----|------------|------------|
| 1 | 90% CD | 2016.03.08 |
| 2 | BID SET | 2016.03.24 |

SHEET TITLE
 PLANTING PLAN

| | |
|-------|-------------|
| DATE | 24 MAR 2016 |
| SCALE | 1"=10' |
| DRAWN | ADP |
| JOB | SKYRMAN |

SHEET
L202
 FILE 1514

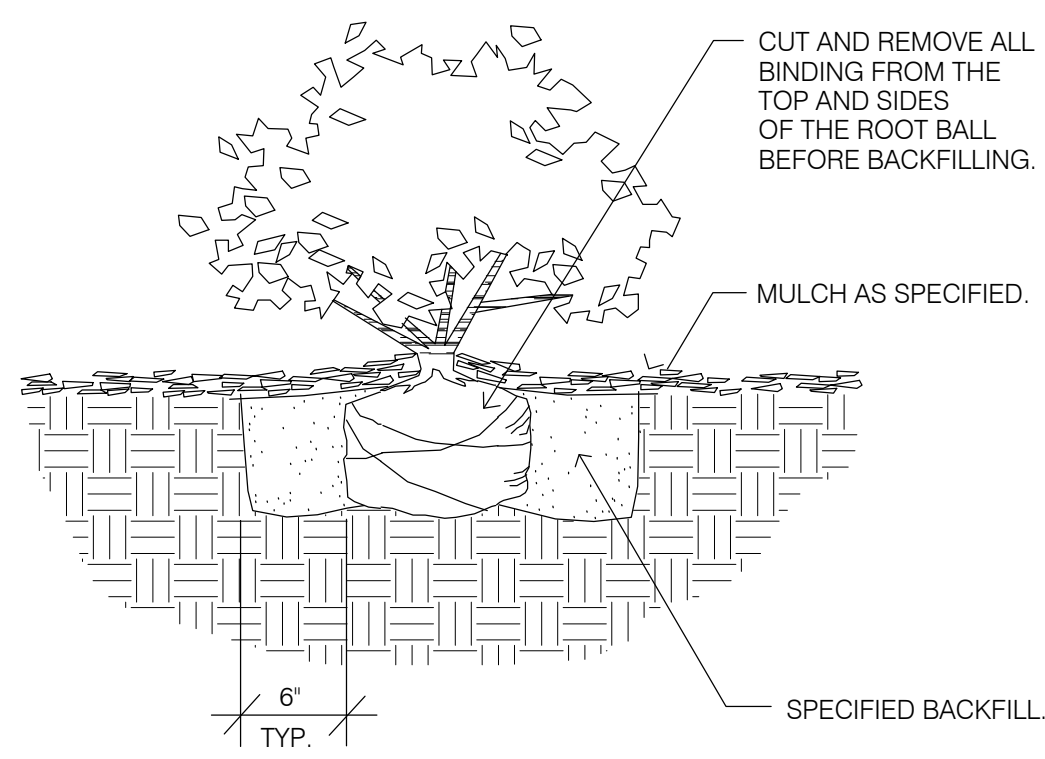
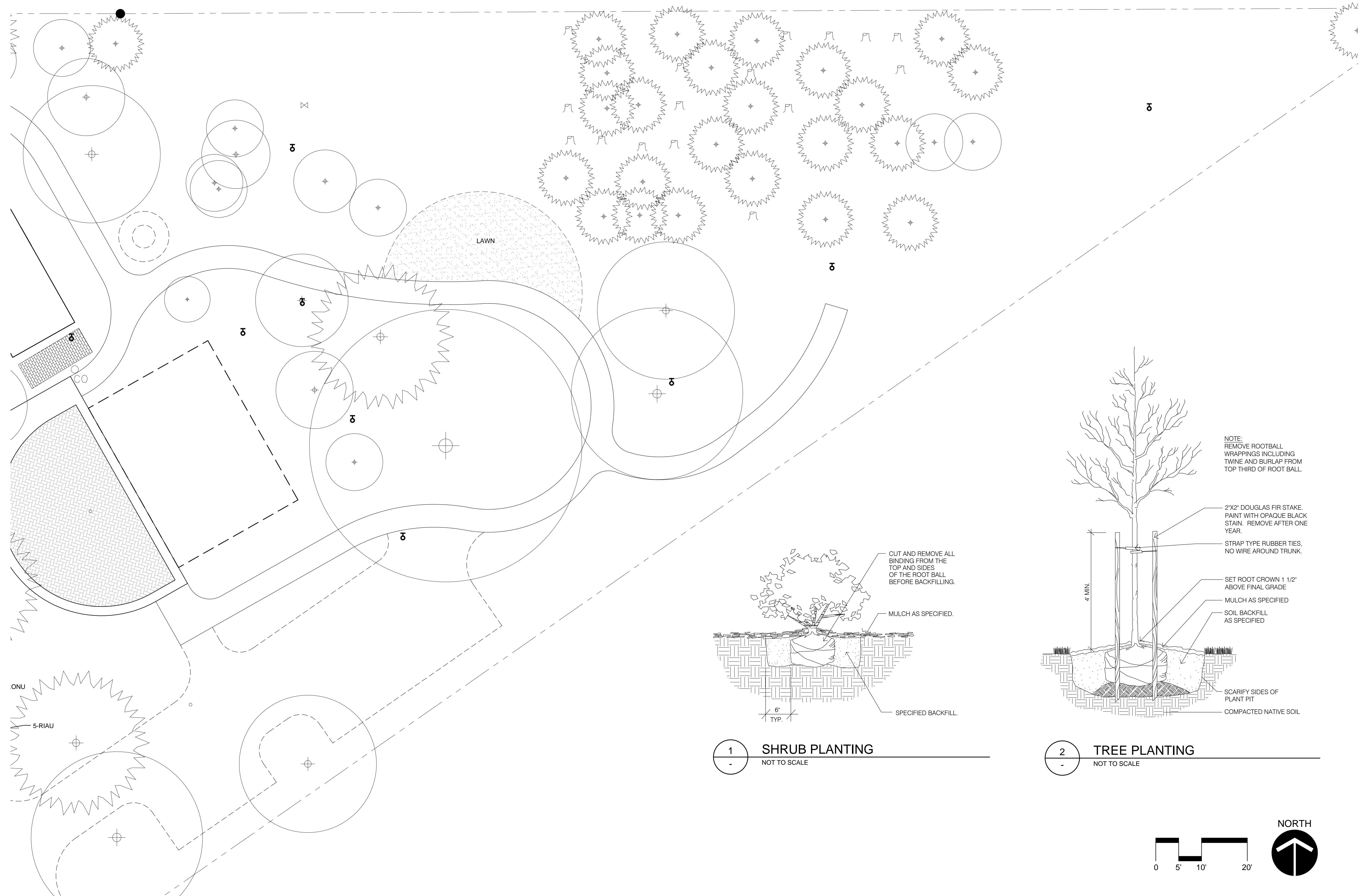


| NO. | ISSUE/REV. | DATE |
|-----|------------|------------|
| 1 | 90% CD | 2016.03.08 |
| 2 | BID SET | 2016.03.24 |

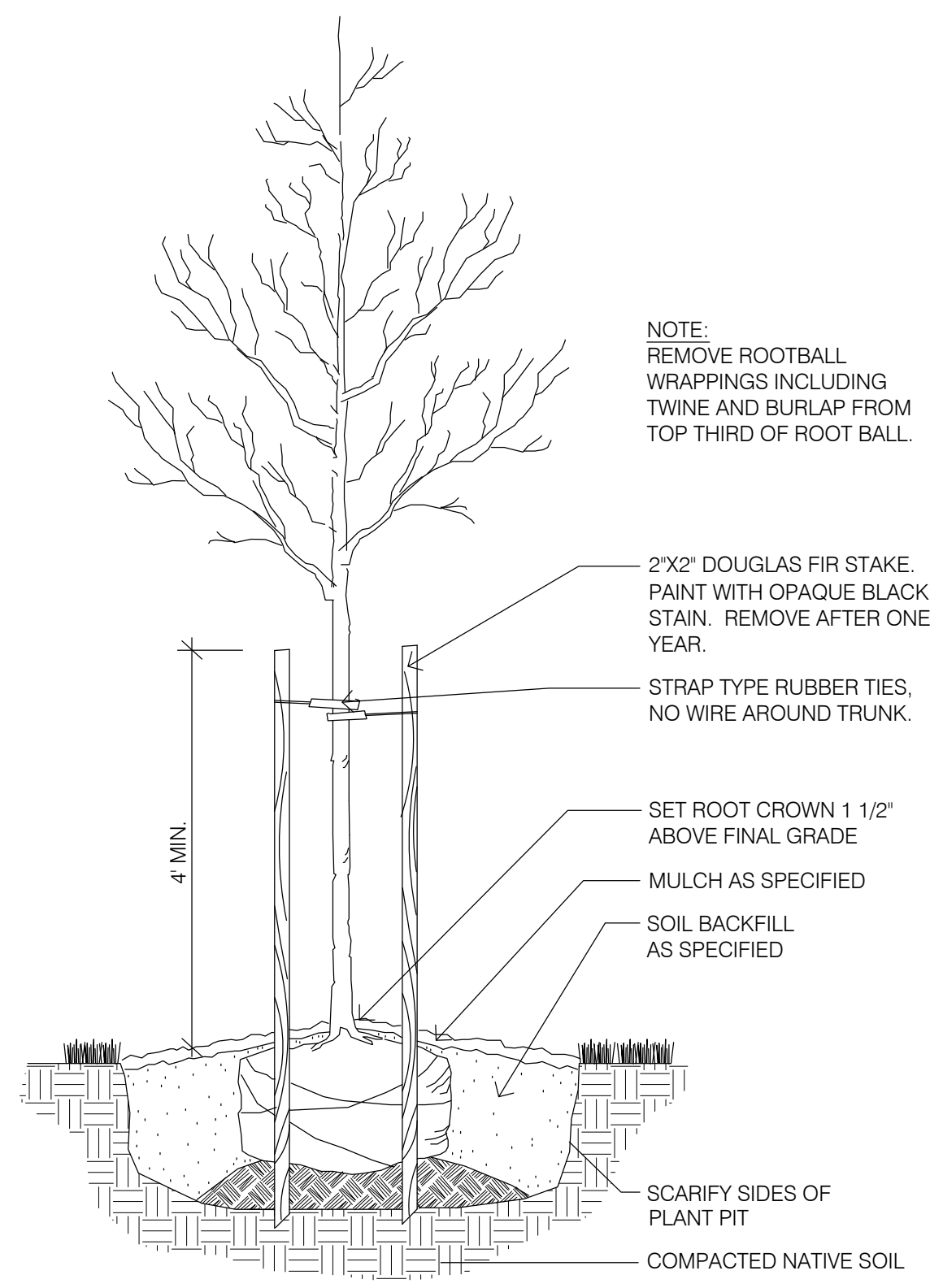
SHEET TITLE
PLANTING PLAN

| | |
|-------|-------------|
| DATE | 24 MAR 2016 |
| SCALE | 1"=10' |
| DRAWN | ADP |
| JOB | SKYRMAN |

SHEET
L203
 FILE 1514



1 SHRUB PLANTING
 NOT TO SCALE



2 TREE PLANTING
 NOT TO SCALE