

TENTATIVE PARTITION PLAT

In the S.W. 1/4 of Sec. 1 & in the S.E. 1/4 of Sec. 2, T.37S, R.2W, W.M. Jackson County, Oregon

TOPOGRAPHIC LEGEND:

- WM = WATER METER.
- WV = WATER VALVE.
- FH = FIRE HYDRANT.
- ARV = AIR RELEASE VALVE.
- W- = WATER LINE.
- SSMH = SANITARY SEWER MANHOLE.
- SSCO = SANITARY SEWER CLEANOUT.
- SS- = SANITARY SEWER LINE.
- SSL- = SANITARY SEWER LATERAL.
- GM = GAS METER.
- GV = GAS VALVE.
- G- = GAS LINE.
- TEL PED = TELEPHONE PEDESTAL.
- T- = TELEPHONE LINE.
- CATV PED = CABLE TV PEDESTAL.
- TV- = TELEVISION LINE.
- DHP- = OVERHEAD POWER LINE.
- LHP- = UNDERGROUND POWER LINE.
- OHU- = OVERHEAD UTILITY LINES.
- SDCI = STORM DRAIN CURB INLET.
- SDMH = STORM DRAIN MANHOLE.
- SDGI = STORM DRAIN GUTTER INLET.
- SDCB = STORM DRAIN CATCH BASIN.
- SD- = STORM DRAIN LINE.
- C&G = CURB & GUTTER.
- VC = VERTICAL CURB.
- SW = SIDEWALK.
- DW = DRIVEWAY.
- AC = ASPHALT CONCRETE.
- EP = EDGE OF PAVEMENT.
- ER = EDGE OF GRAVEL ROAD.
- CC = CONCRETE.
- RCP = REINFORCED CONCRETE PIPE.
- CMP = CORRUGATED METAL PIPE.
- HDPE = HIGH DENSITY POLYETHYLENE PIPE.
- IE = INVERT ELEVATION.
- FL = FLOW LINE ELEVATION.

LEGEND:

- ⊙ = FD. COUNTY SURVEYOR'S BRASS CAPPED MONUMENT PER {YEAR} RE-ESTAB'S.
- ⊗ = FD. 1.5" IRON PIPE (RECORD 3/4" IRON PIN) PER FS1971, ET. AL.
- = FD. 1" IRON PIPE PER FS1971.
- ⊗ = FD. 1/2" IRON PIPE. SEE FS1971, ET. AL.
- = FD. 5/8" IRON PIN & PLASTIC CAP MKD. MCMAHAN LS1913 PER FS17883.
- = FD. 5/8" IRON PIN & PLASTIC CAP MKD. JACKSON COUNTY RDS & PARKS SVC PER FS16996.
- ▲ = FD. 5/8" IRON PIN & PLASTIC CAP MKD. FITCH LS2867 PER FS16038.
- ⊗ = FD. BRASS WASHER MKD. LS1913 & TACK IN LEAD PLUG PER FS17883.
- = FD. 5/8" IRON PIN & PLASTIC CAP MKD. L.J. FRIAR & ASSOC PER FS21096 OR FS23582.
- = SET 5/8" X 24" IRON PIN & PLASTIC CAP MKD. L.J. FRIAR & ASSOC.

- JCDR = JACKSON COUNTY DEED RECORDS.
- ORJCO = OFFICIAL RECORDS OF JACKSON COUNTY, OREGON.
- L1/L2 = RECORD DATA PER FS17883.
- C1/L1 = SEE COURSE DATA TABLE.
- FS = FILED SURVEY #.
- X = FENCE LINE.
- X- = RECORD DATA PER JACKSON COUNTY RE-ESTAB'S.
- RS = RECORD DATA PER DOC. 2020-049070, ORJCO.
- RS = RESET 5/8" X 24" IRON PIN & PLASTIC CAP MKD. L.J. FRIAR & ASSOC. IN POSITION OF DESTROYED MONUMENT PREVIOUSLY TIED BY THIS OFFICE.

BASIS OF BEARINGS:

TRUE NORTH BASED ON G.P.S. MEASUREMENTS APPLIED TO THE EAST LINE OF D.L.C. 55 AS SHOWN.
UNIT OF MEASUREMENT = FEET SCALE: 1" = 60'

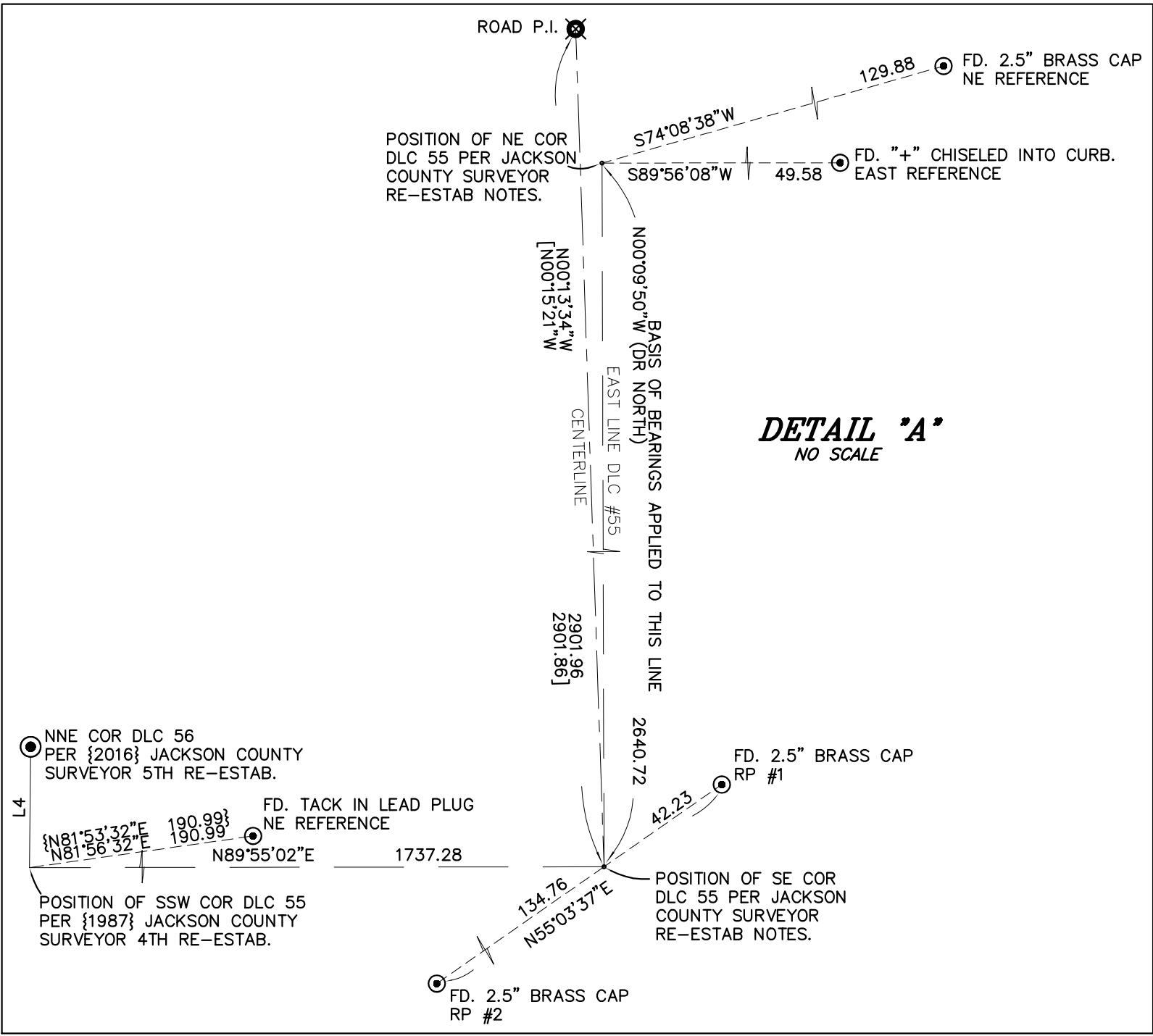
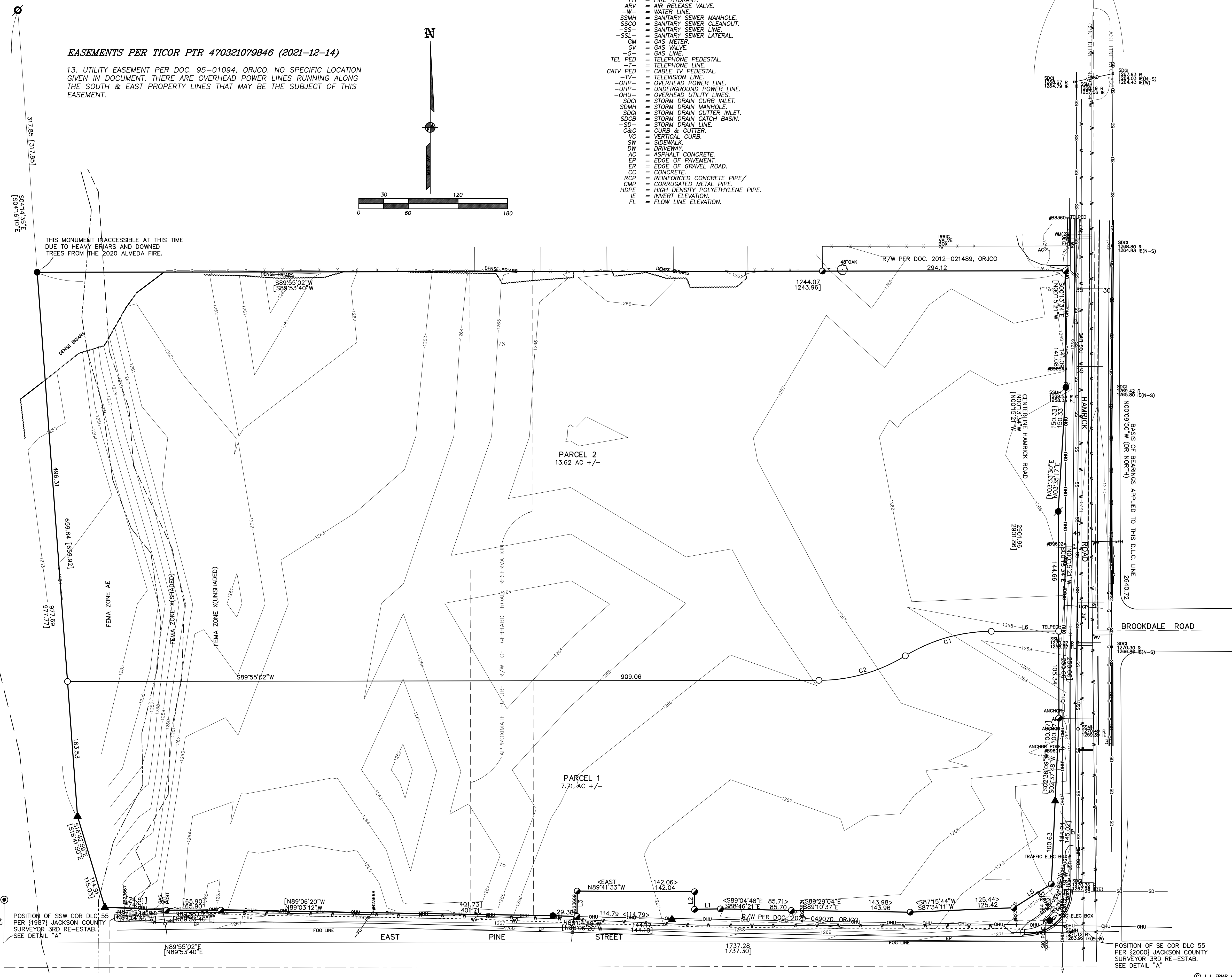
ELEVATION DATUM:

NAVD 1988 BASED ON CITY OF CENTRAL POINT BM #24. BRASS DISK ON THE EAST CORNER OF SDCI, NORTH SIDE OF BEEBE RD AT 2651 BEEBE DR (STAMPED CPE 101). ELEV. 1261.92'

COURSE DATA TABLE

NUM	DELTA	ARC	RADIUS	CHORD
C1	31°22'45"	109.53	200.00	S74°05'03"W 108.17
C2	31°31'22"	110.04	200.00	N74°09'21"E 108.65

NUM	BEARING	DISTANCE	NUM	BEARING	DISTANCE
L1	N89°06'45"E	31.36	L4	S00°35'30"W	52.10
	<N88°48'18"E>	<31.37>		{S00°35'40"W}	{52.10}
L2	S00°18'27"W	21.25	L5	S57°45'07"W	53.74
	<SOUTH>	<21.25>		<S57°28'40"W>	<53.75>
L3	N00°18'27"E	30.65	L6	N89°46'28"E	61.46
	<NORTH>	<30.65>			



REGISTERED PROFESSIONAL LAND SURVEYOR <i>James E. Hibbs</i> JULY 17, 1986 JAMES E. HIBBS 2234 RENEWAL DATE: 6-30-25	TITLE: TENTATIVE PARTITION PLAT ASSESSOR'S MAP #: 372W02D T100 FOR: H/AC 2251 TABLE ROCK RD, MEDFORD, OREGON 97501	DATE: 9 OCT 2023 SCALE: 1 inch = 60 feet DRAWN BY: JEH CHK BY: ORIGIN: ROTATION: 0° JOB#: 21217M Sheet 1 of 1.
	L.J. FRIAR & ASSOCIATES P.C. CONSULTING LAND SURVEYORS P.O. Box 1947, Prineville, OR 97535 Phone: (541) 777-2762 Email: lfriarandassociates@charter.net	