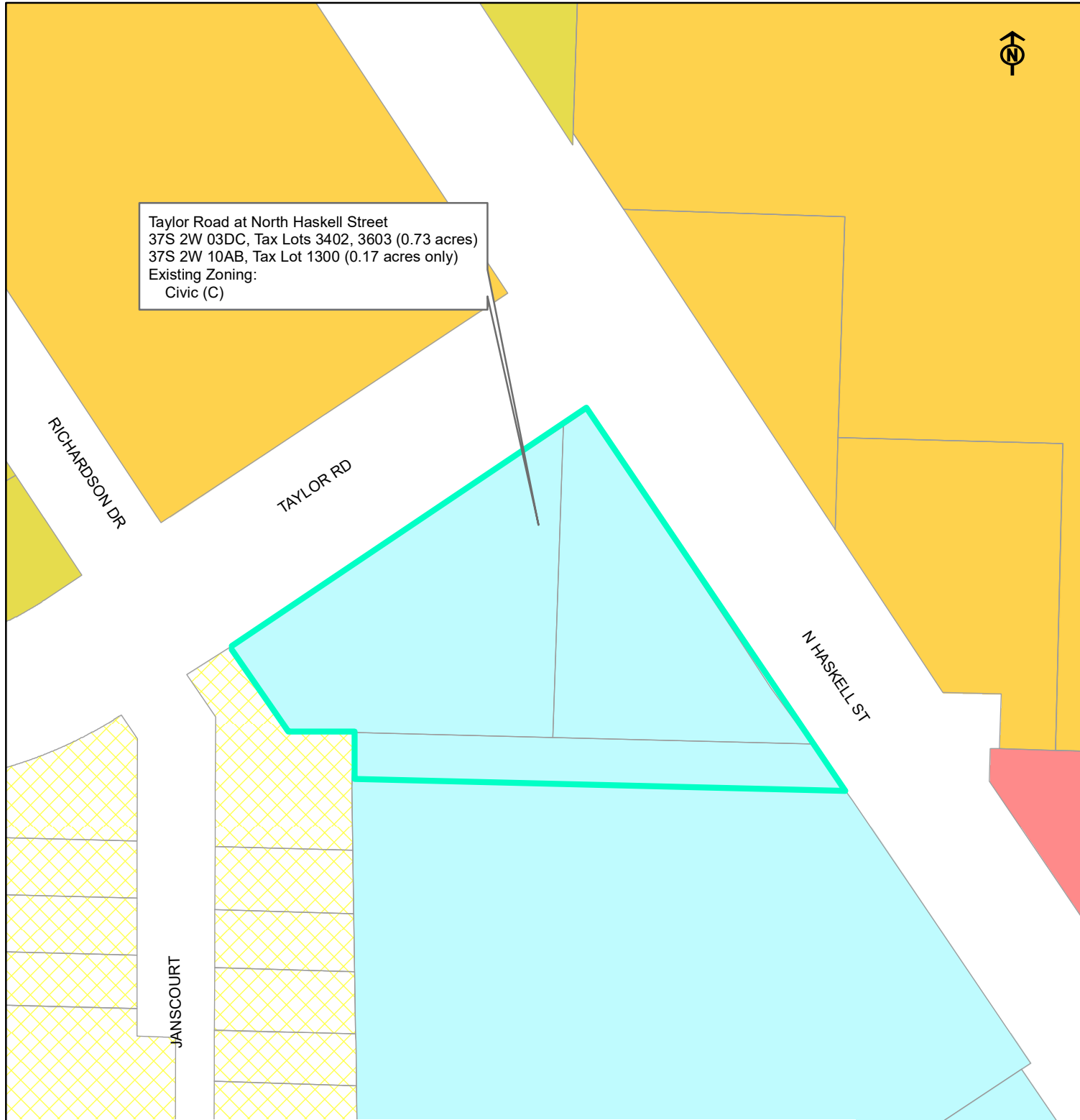




Taylor Road at North Haskell Street  
 37S 2W 03DC, Tax Lots 3402, 3603 (0.73 acres)  
 37S 2W 10AB, Tax Lot 1300 (0.17 acres only)  
 Existing Zoning:  
 Civic (C)



**Legend**

- TOD Overlay
- citylimitpoly
- UGB
- BCG = Bear Creek Greenway
- C-2 (M) = Commercial - Medical District
- C-4 = Tourist and Office
- C-5 = Thoroughfare Commercial
- CN = Neighborhood Commercial
- Civic
- ETOD Civic\*
- EC = Employment Commercial (TOD)
- GC = General Commercial (TOD)
- HMR = High Mix Residential/Commercial (TOD)
- LMR = Low Mix Residential (TOD)
- ETOD LMR\*
- M-1 = Industrial
- M-2 = Industrial General
- MMR = Medium Mix Residential (TOD)
- ETOD MMR\*
- OS = Open Space/ Parks
- R-3 = Multiple Family Residential
- R-2 = Two-Family Residential
- R-1-6 = SF Residential - 6,000
- R-1-8 = SF Residential - 8,000
- R-1-10 = SF Residential -10,000
- R-L = Low Density Residential

1 inch = 0 miles



# Official Zoning Map

City of Central Point, Oregon  
 Proposed Amendment  
 ZC-23001

Updated by: S. Holley  
 October 12, 2021  
 File Path: \\cpc\hahares\planning\ArcGIS\Project Files\Zoning\Official Zoning Map (24x36)