

PRELIMINARY LANDSCAPE NOTES

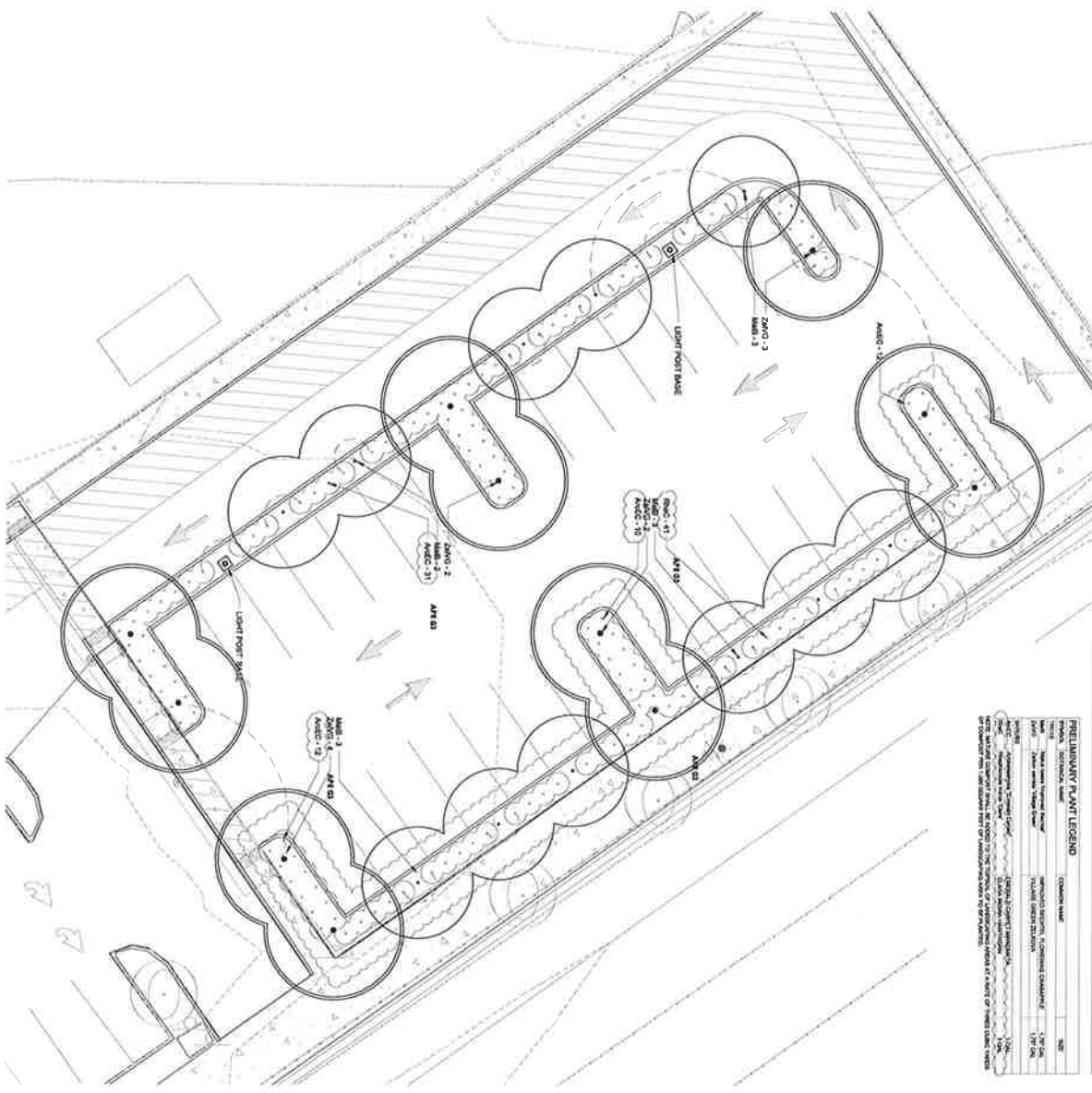
1. All landscape plantings shall be installed in accordance with the schedule of plantings and notes. The contractor shall be responsible for the proper installation and maintenance of all landscape plantings.

2. The contractor shall be responsible for the proper installation and maintenance of all landscape plantings. The contractor shall be responsible for the proper installation and maintenance of all landscape plantings.

3. All landscape plantings shall be installed in accordance with the schedule of plantings and notes. The contractor shall be responsible for the proper installation and maintenance of all landscape plantings.

PRELIMINARY PLANT LEGEND

Plant Name	Quantity	Notes
Plant Name	Quantity	Notes
Plant Name	Quantity	Notes
Plant Name	Quantity	Notes
Plant Name	Quantity	Notes
Plant Name	Quantity	Notes



NOTE 1: All landscape plantings shall be installed in accordance with the schedule of plantings and notes. The contractor shall be responsible for the proper installation and maintenance of all landscape plantings.

NOTE 2: The contractor shall be responsible for the proper installation and maintenance of all landscape plantings. The contractor shall be responsible for the proper installation and maintenance of all landscape plantings.

NOTE 3: All landscape plantings shall be installed in accordance with the schedule of plantings and notes. The contractor shall be responsible for the proper installation and maintenance of all landscape plantings.

NOTE 4: The contractor shall be responsible for the proper installation and maintenance of all landscape plantings. The contractor shall be responsible for the proper installation and maintenance of all landscape plantings.

NOTE 5: All landscape plantings shall be installed in accordance with the schedule of plantings and notes. The contractor shall be responsible for the proper installation and maintenance of all landscape plantings.

NOTE 6: The contractor shall be responsible for the proper installation and maintenance of all landscape plantings. The contractor shall be responsible for the proper installation and maintenance of all landscape plantings.

NOTE 7: All landscape plantings shall be installed in accordance with the schedule of plantings and notes. The contractor shall be responsible for the proper installation and maintenance of all landscape plantings.

NOTE 8: The contractor shall be responsible for the proper installation and maintenance of all landscape plantings. The contractor shall be responsible for the proper installation and maintenance of all landscape plantings.

NOTE 9: All landscape plantings shall be installed in accordance with the schedule of plantings and notes. The contractor shall be responsible for the proper installation and maintenance of all landscape plantings.

NOTE 10: The contractor shall be responsible for the proper installation and maintenance of all landscape plantings. The contractor shall be responsible for the proper installation and maintenance of all landscape plantings.

NOTE 11: All landscape plantings shall be installed in accordance with the schedule of plantings and notes. The contractor shall be responsible for the proper installation and maintenance of all landscape plantings.

NOTE 12: The contractor shall be responsible for the proper installation and maintenance of all landscape plantings. The contractor shall be responsible for the proper installation and maintenance of all landscape plantings.



L2.0

No.	Description	Date
1	PRELIMINARY PLANT LEGEND	04/27/21
2	PRELIMINARY LANDSCAPE NOTES	04/27/21
3	PRELIMINARY PLANT LEGEND	04/27/21
4	PRELIMINARY LANDSCAPE NOTES	04/27/21

PROJECT NUMBER: 200045
DATE: 03/15/2021
BUILDING PERMIT ISSUE

KerCain
LANDSCAPE ARCHITECTURE

BBT ARCHITECTS

1160 SW Simpson Ave - Suite 100
Bend, Oregon 97702
1.541.382.2533 | 1.541.389.8033

JACKSON COUNTY
DISTRICT #6
MAE RICHARDSON
ELEMENTARY SCHOOL
REMODEL

200 W. PINE ST.
CENTRAL POINT, OR
97502