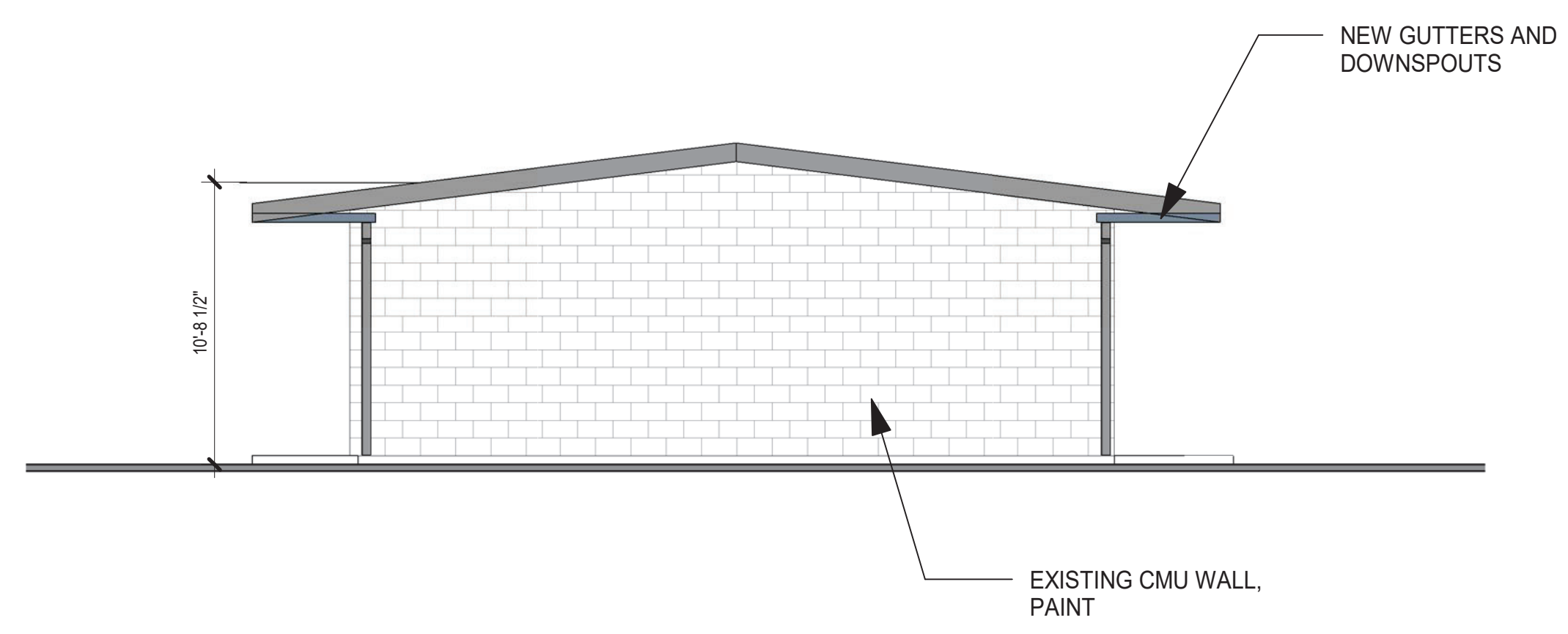
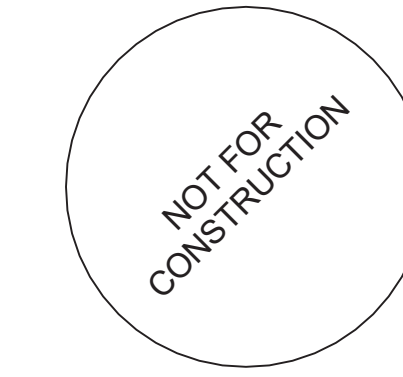
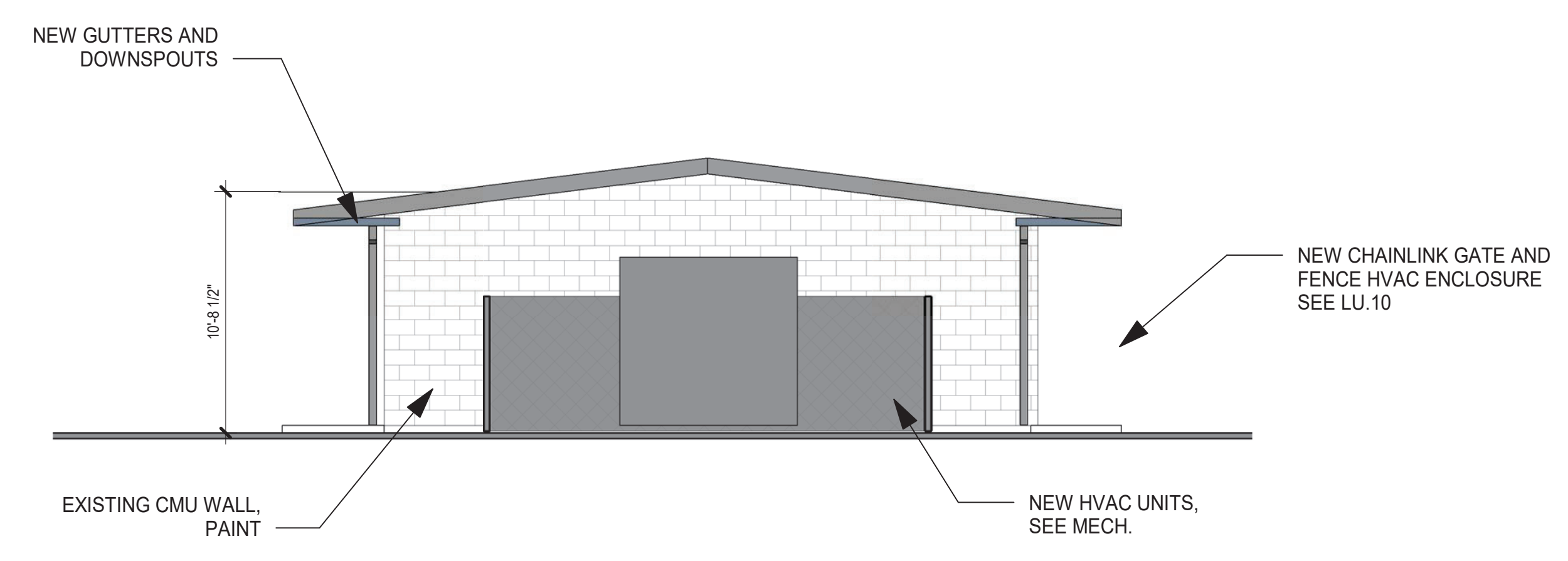


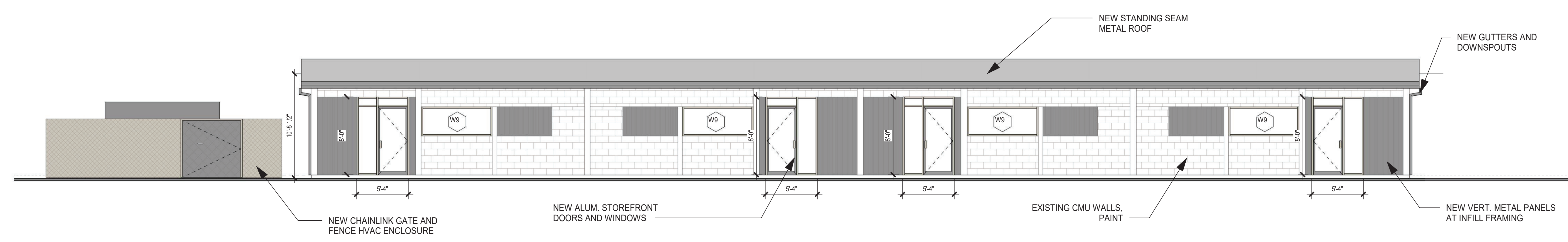
Stamp



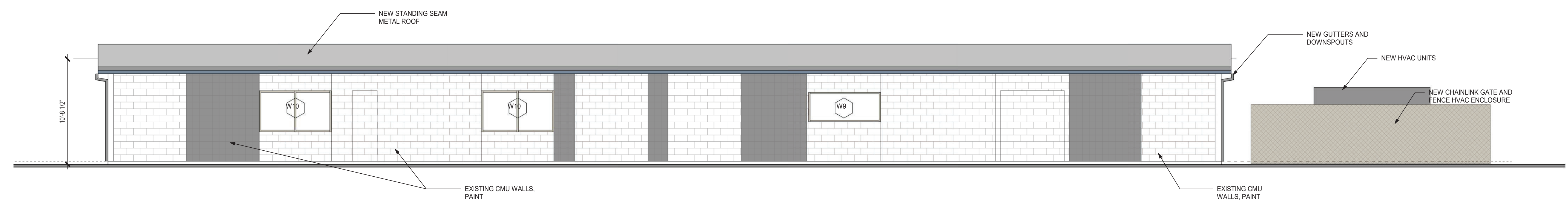
**1** BLDG A - NORTH.  
3/16" = 1'-0"



**2** BLDG A - SOUTH.  
3/16" = 1'-0"



**3** BLDG A - EAST.  
3/16" = 1'-0"



**4** BLDG A - WEST.  
3/16" = 1'-0"

CENTRAL POINT SCHOOL DISTRICT 6  
**EARLY LEARNING CENTER**  
615 S 2nd Street  
Central Point, Oregon 97502



Project

Consultant

Revisions

No.	Description	Date

Date 11/16/20

Job No. 19-035

Drawn By Author

Checked By Checker

**TYPE-2 LUA**

Date 11/16/20

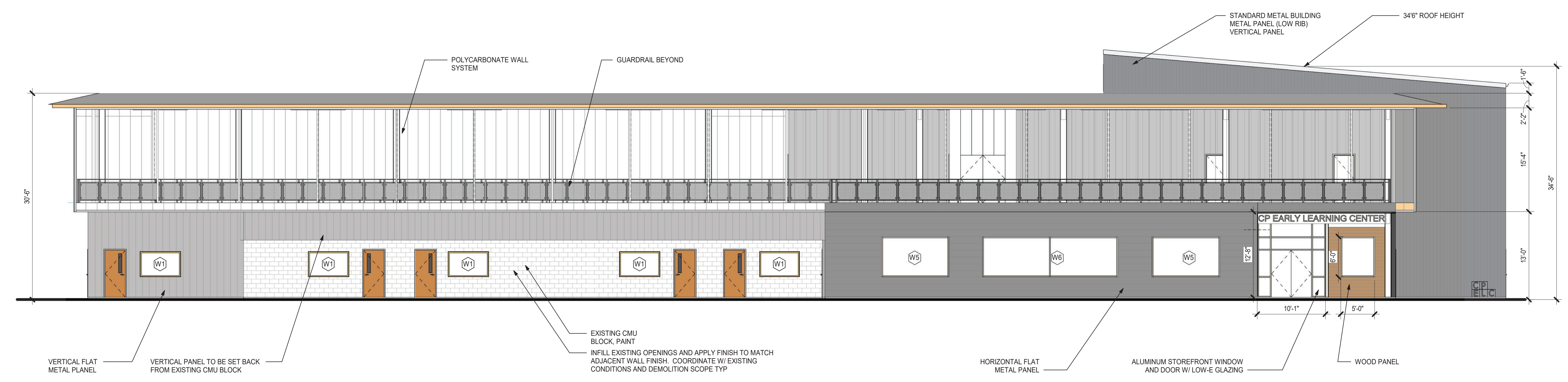
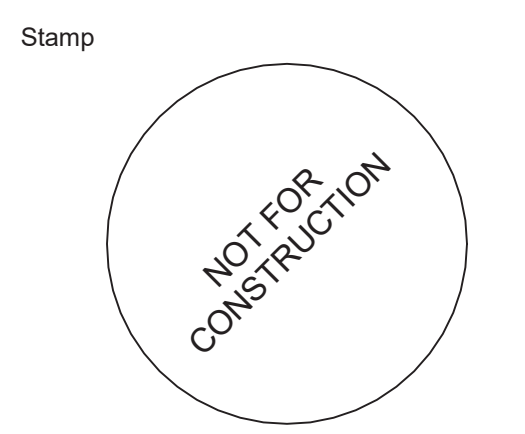
Project Number 19-035

Drawing Title

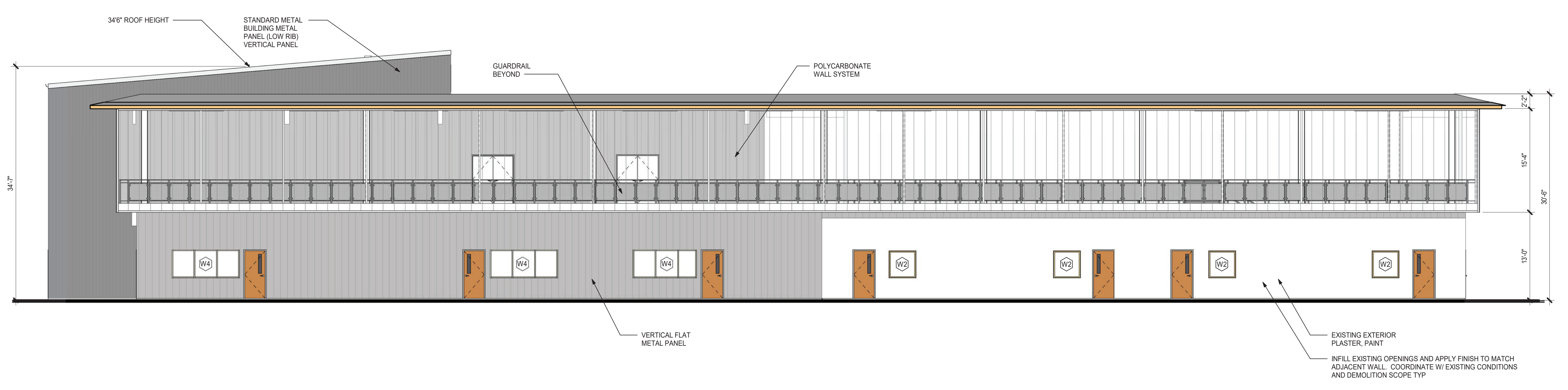
**EXTERIOR  
ELEVATION  
CONCEPTS**

Sheet No.

**LU.05**



**1** BLDG B - NORTH.  
1/8" = 1'-0"



**2** BLDG B - SOUTH.  
1/8" = 1'-0"

CENTRAL POINT SCHOOL DISTRICT 6  
**EARLY LEARNING CENTER**  
615 S 2nd Street  
Central Point, Oregon 97502



Project  
Consultant

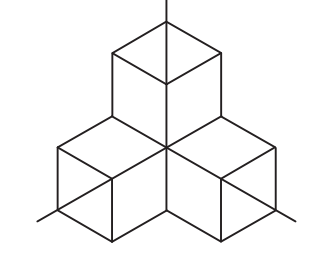
No.	Description	Date

Date 11/16/20  
Job No. 19-035  
Drawn By Author  
Checked By Checker

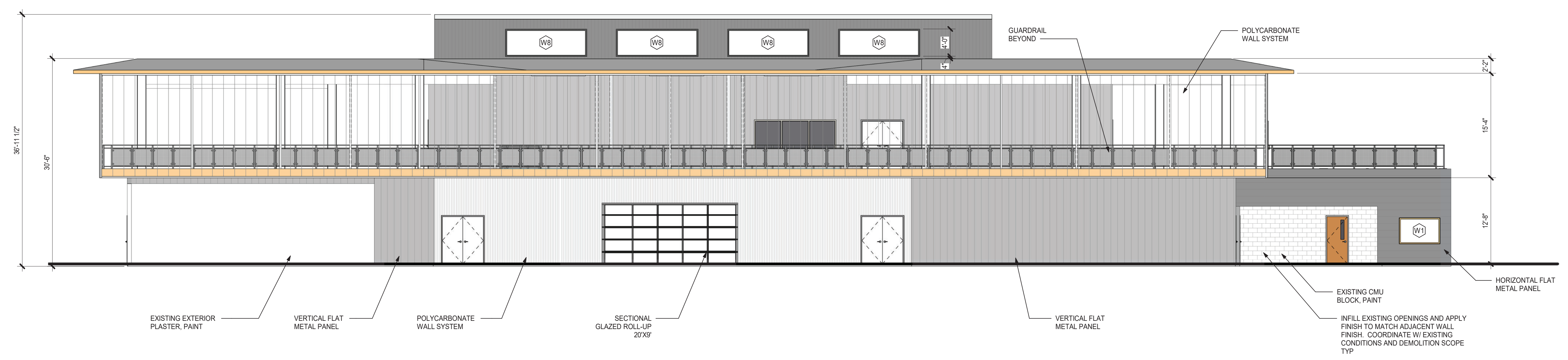
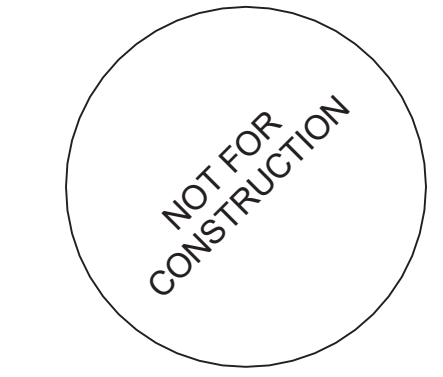
**TYPE-2 LUA**

Date 11/16/20  
Project Number 19-035  
Drawing Title **EXTERIOR ELEVATION CONCEPTS**

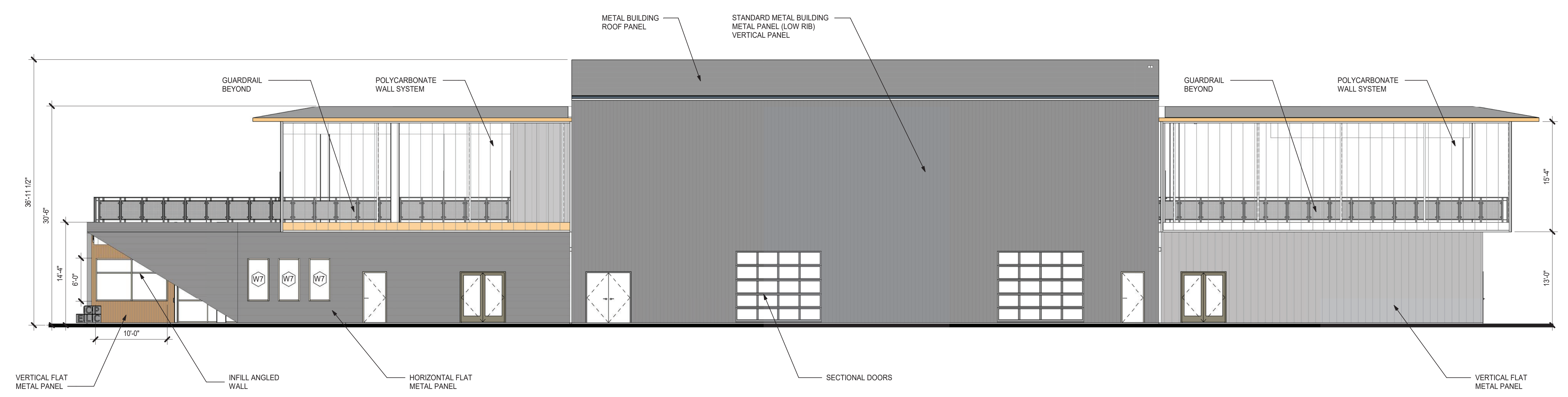
Sheet No. **LU.06**



Stamp



**1** BLDG B - EAST.  
1/8" = 1'-0"



**2** BLDG B - WEST.  
1/8" = 1'-0"

CENTRAL POINT SCHOOL DISTRICT 6  
**EARLY LEARNING CENTER**  
615 S 2nd Street  
Central Point, Oregon 97502



Project

Consultant

Revisions

No.	Description	Date

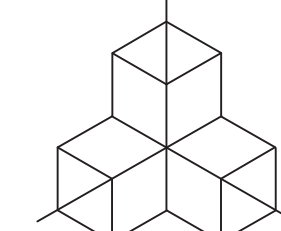
Date	11/16/20
Job No.	19-035
Drawn By	Author
Checked By	Checker

**TYPE-2 LUA**

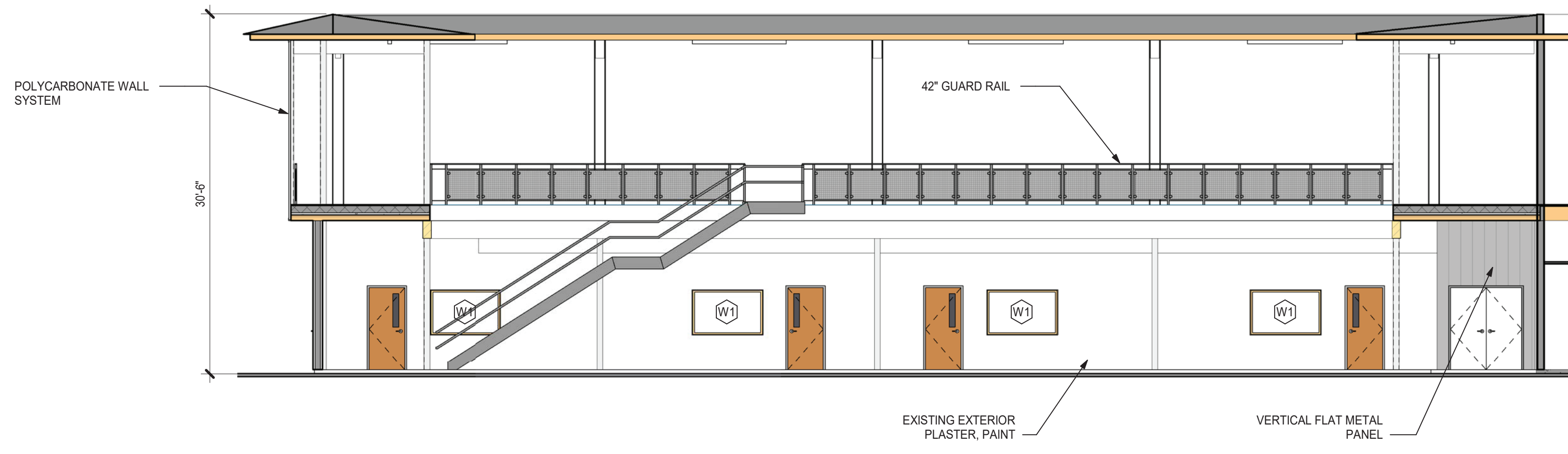
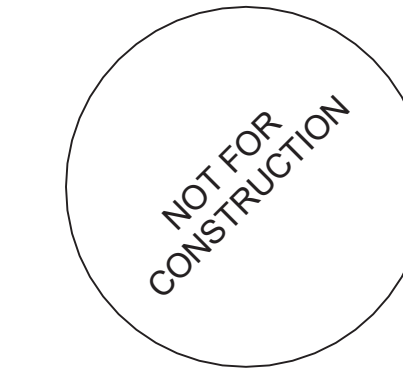
Date	11/16/20
Project Number	19-035

Drawing Title  
**EXTERIOR  
ELEVATION  
CONCEPTS**

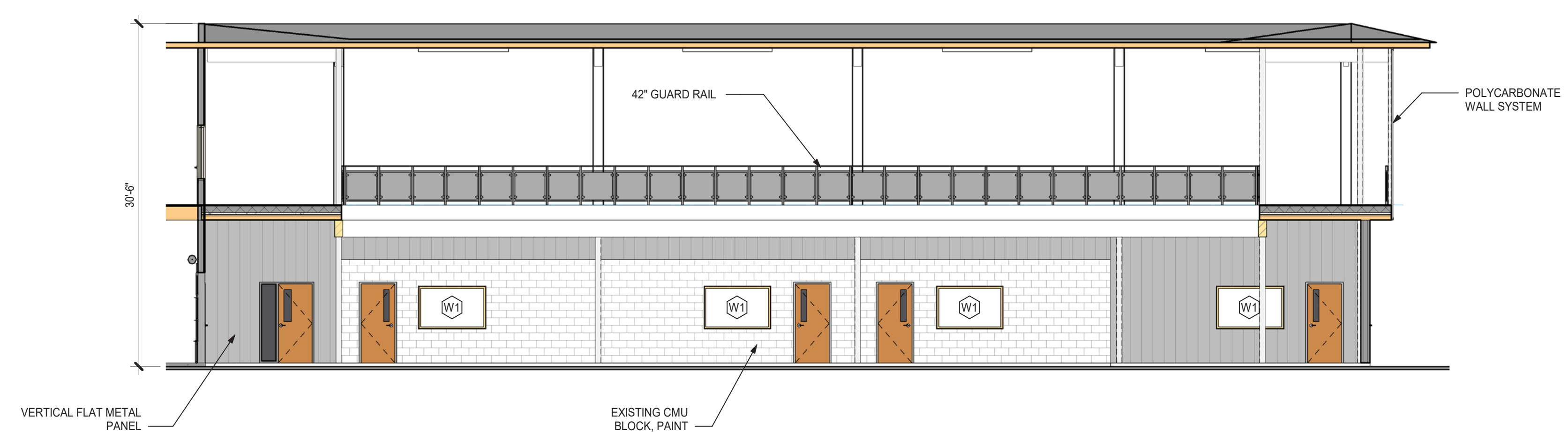
Sheet No.  
**LU.07**



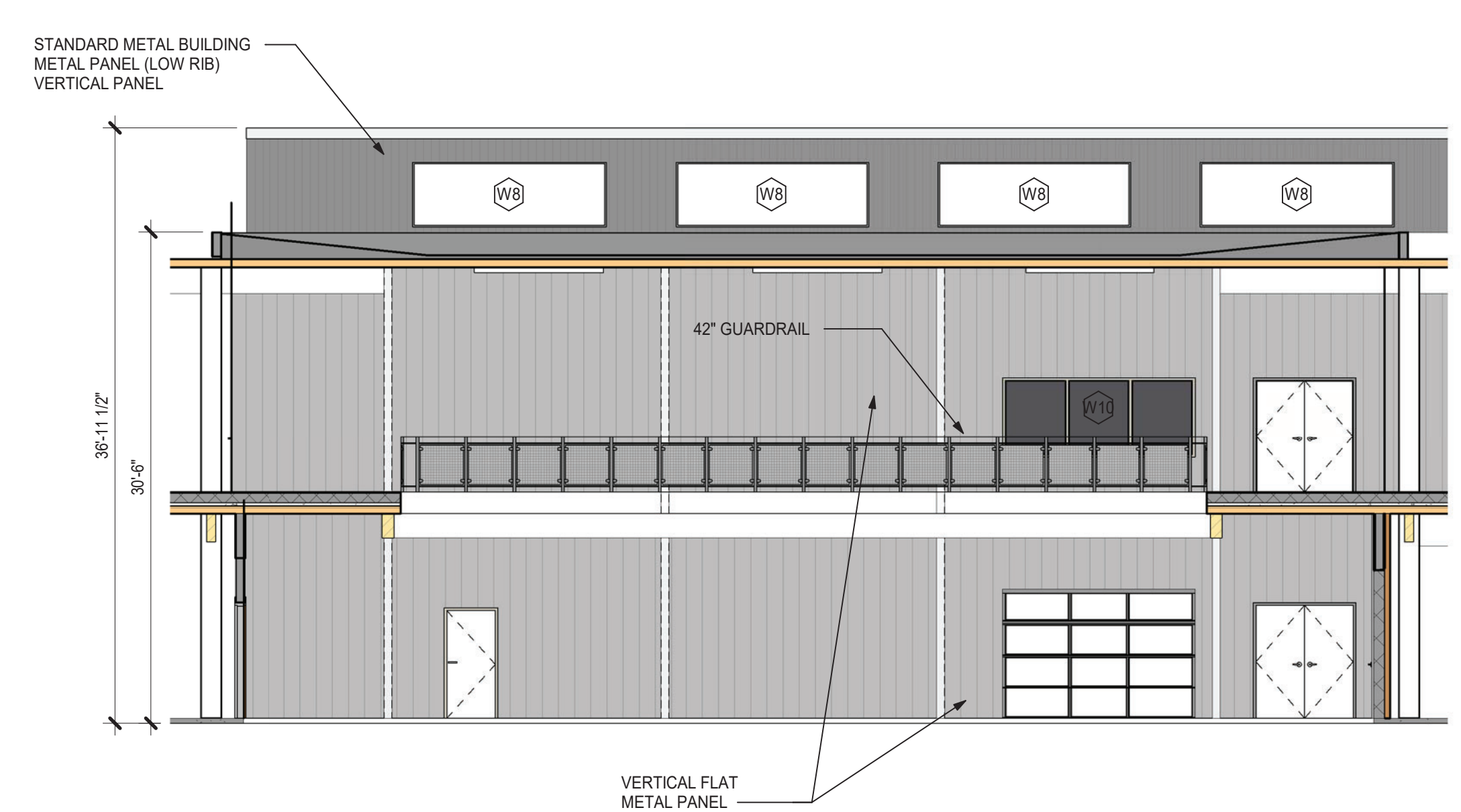
Stamp



**1** BLDG B TOWN SQUARE NORTH.  
1/8" = 1'-0"



**2** BLDG B TOWN SQUARE SOUTH.  
1/8" = 1'-0"



**3** BLDG B TOWN SQUARE EAST.  
1/8" = 1'-0"

CENTRAL POINT SCHOOL DISTRICT 6  
**EARLY LEARNING CENTER**  
615 S 2nd Street  
Central Point, Oregon 97502



Project

Consultant

Revisions

No.	Description	Date

Date 11/16/20

Job No. 19-035

Drawn By Author

Checked By Checker

**TYPE-2 LUA**

Date 11/16/20

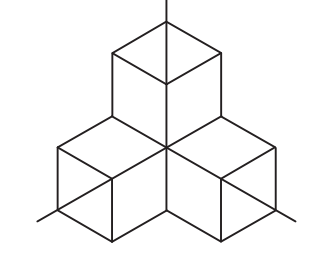
Project Number 19-035

Drawing Title

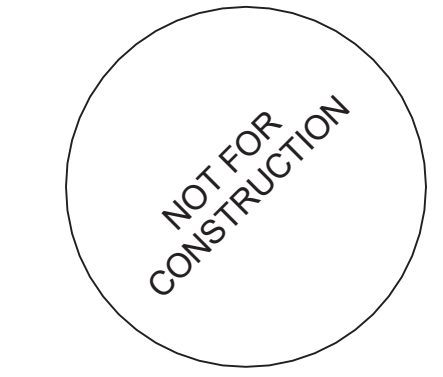
**EXTERIOR  
ELEVATION  
CONCEPTS**

Sheet No.

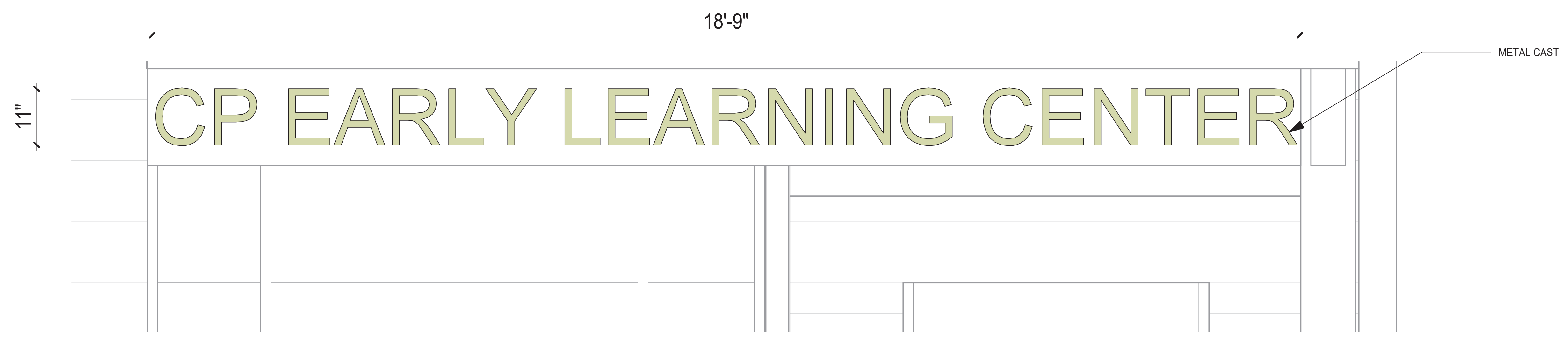
**LU.08**



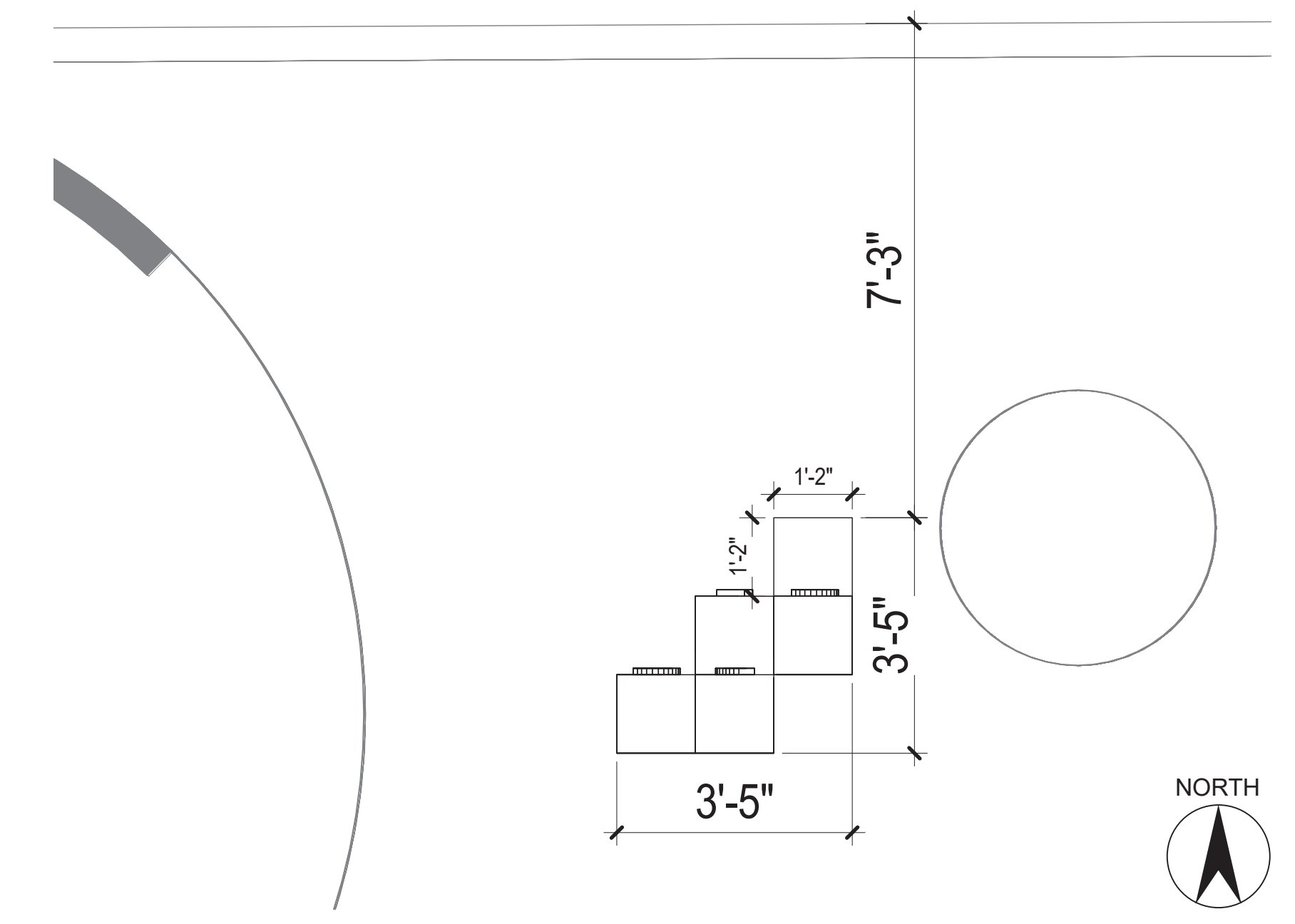
Stamp



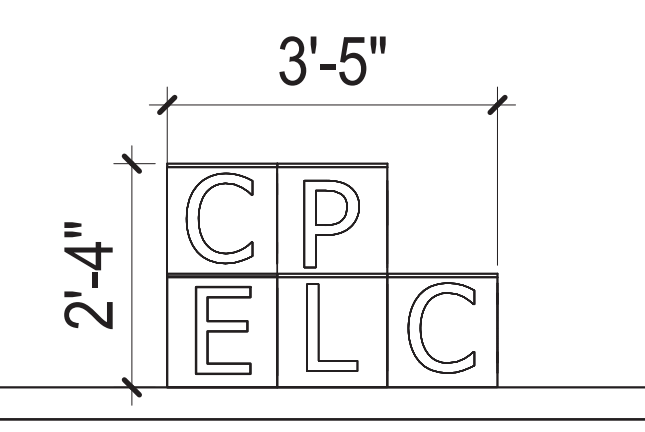
**1** BLDG B SIGNAGE ELEVATION  
1/8" = 1'-0"



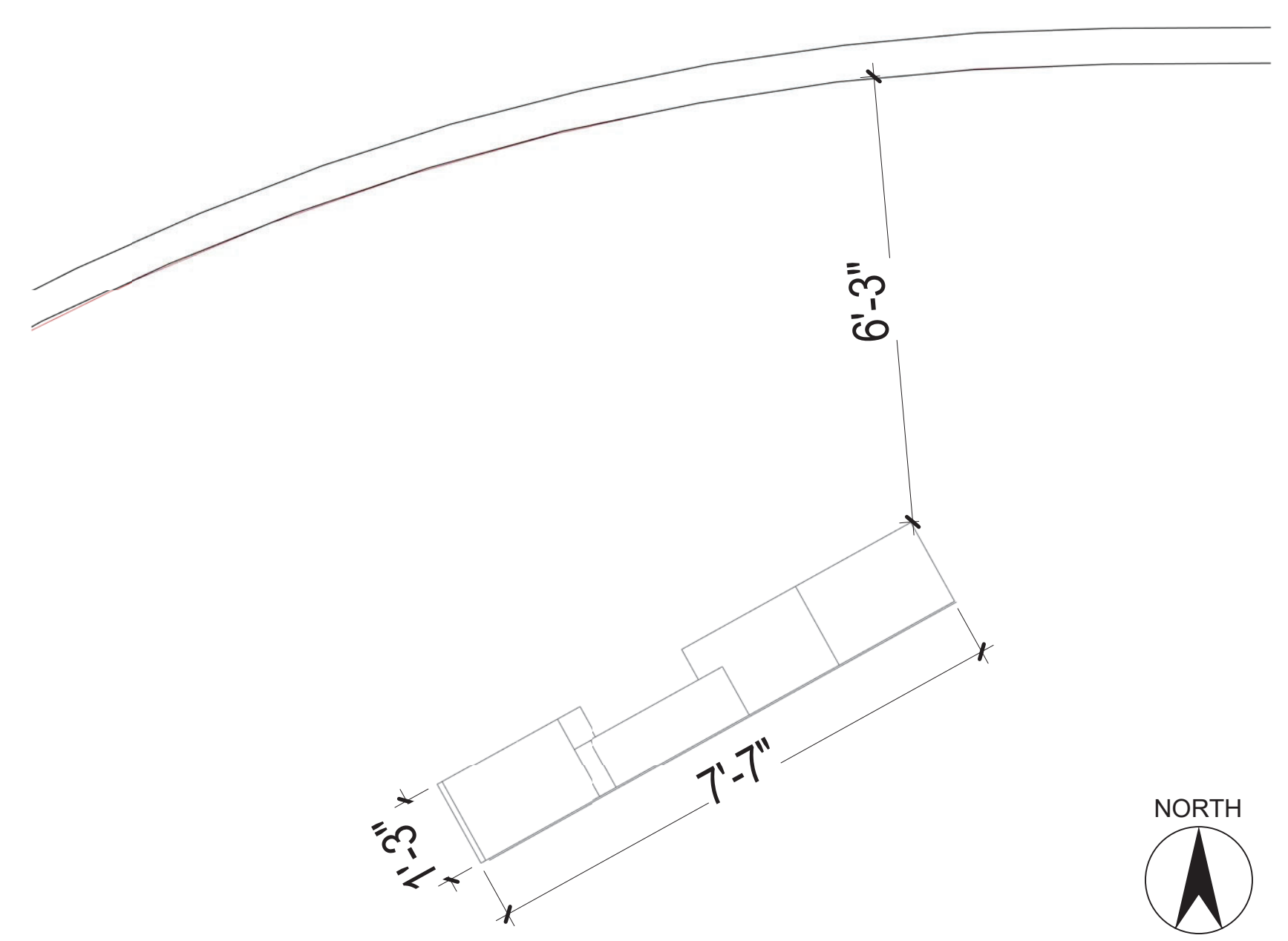
**2** BLDG B ENLARGED SIGNAGE  
1" = 1'-0"



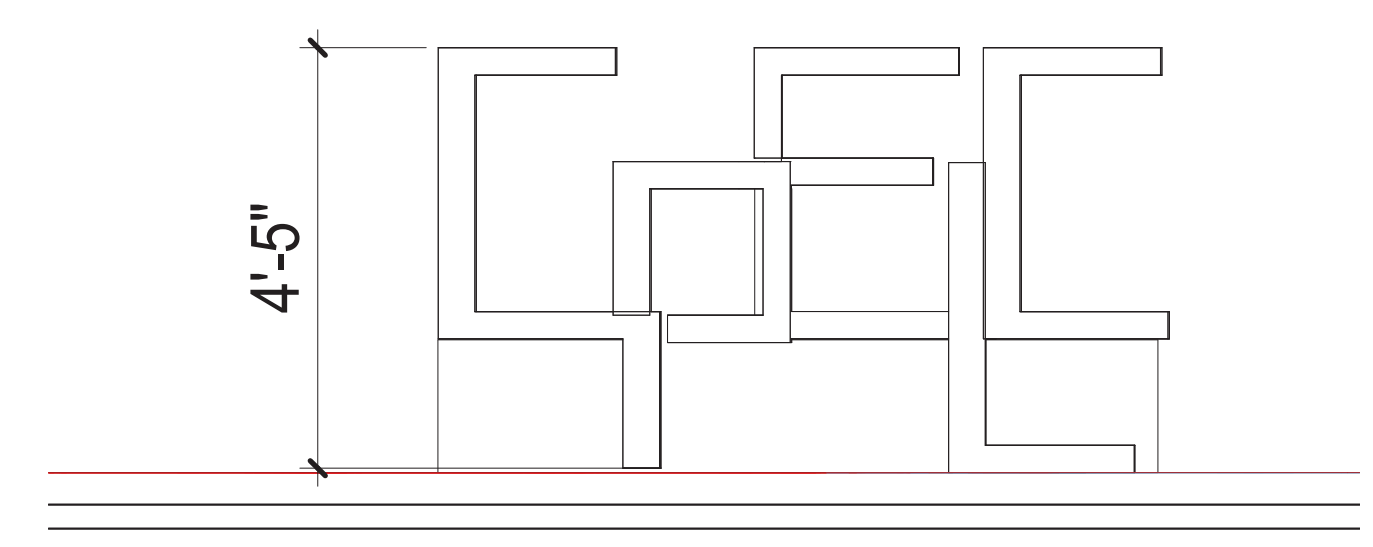
**6** CUBE SIGNAGE PLAN  
1/2" = 1'-0"



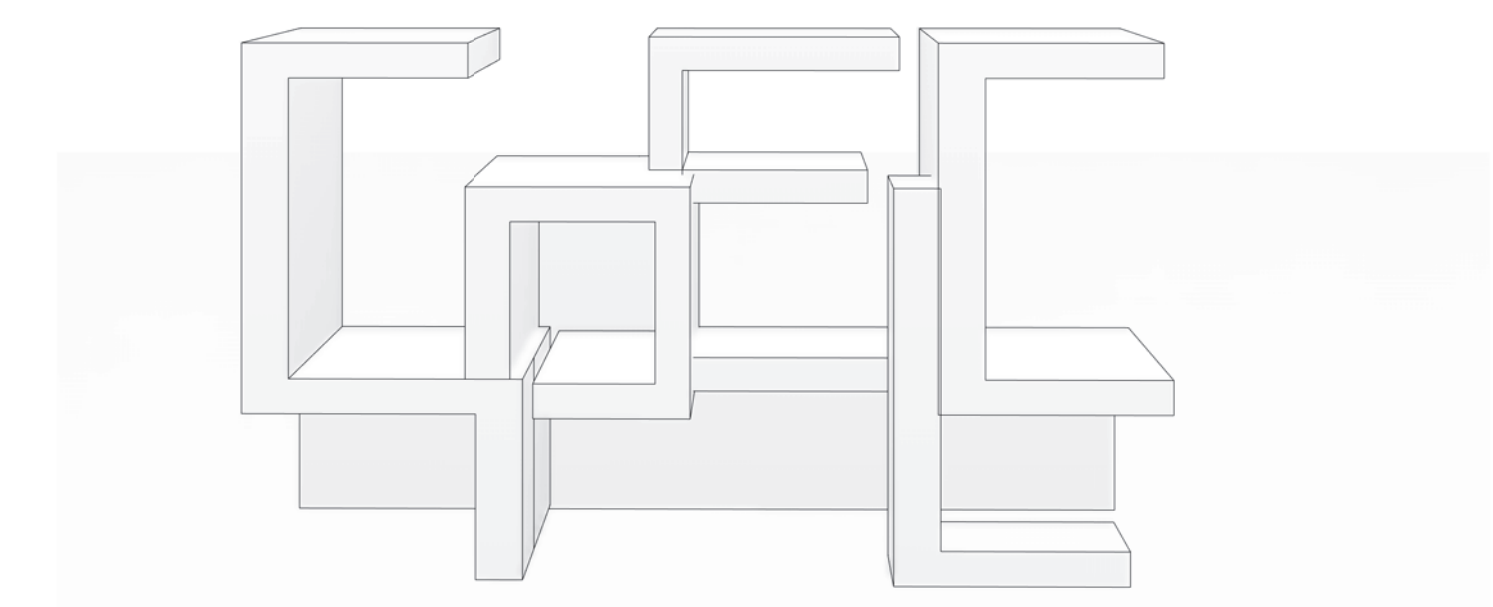
**7** CUBE SIGNAGE ELEVATION  
1/2" = 1'-0"



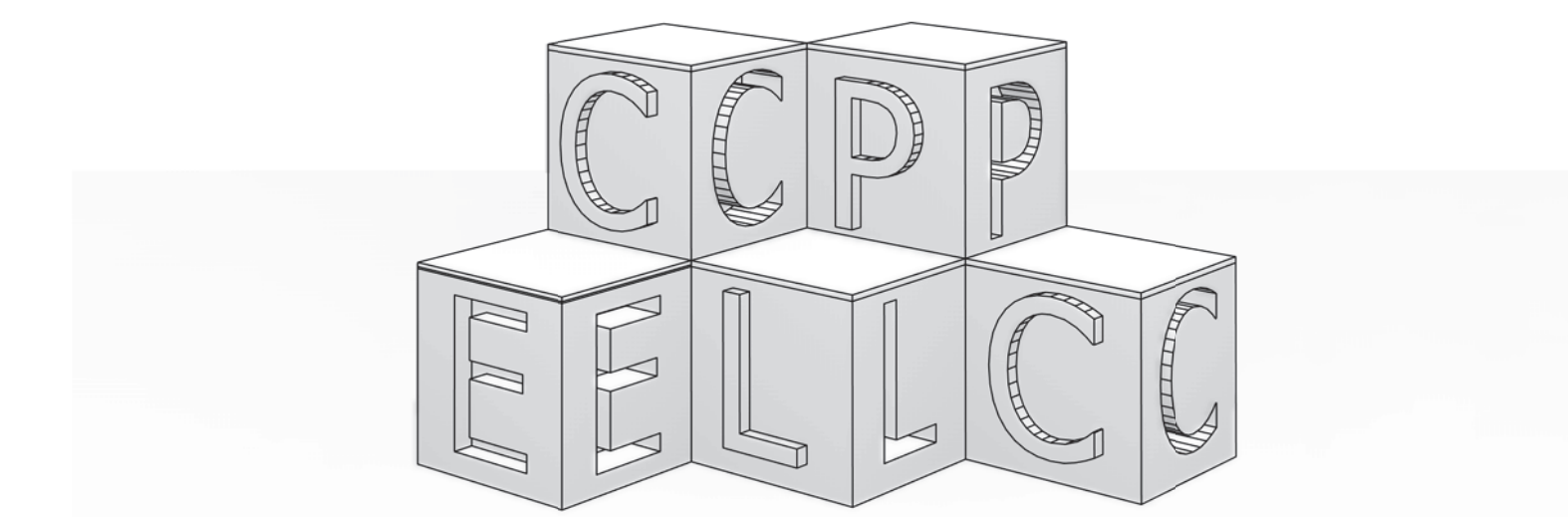
**3** CP ELC MONUMENT SIGNAGE PLAN  
1/2" = 1'-0"



**4** MONUMENT SIGNAGE ELEVATION  
1/2" = 1'-0"



**5** MONUMENT SIGNAGE



**8** CUBE SIGNAGE

CENTRAL POINT SCHOOL DISTRICT 6  
EARLY LEARNING CENTER  
615 S 2nd Street  
Central Point, Oregon 97502



Project

Consultant

Revisions

No.	Description	Date

Date

11/16/20

Job No.

19-035

Drawn By

Author

Checked By

Checker

TYPE-2 LUA

Date

11/16/20

Project Number

19-035

Drawing Title

SIGNAGE CONCEPTS

Sheet No.

LU.09

DATE 11/16/20 11:57:39 AM  
FILE PATH C:\Users\ymaz@arkitek\OneDrive\Documents\CP ELC Land Use\_201016(1).ind  
copyright © 2018