
**Central Point
City Hall
541-664-3321**

City Council

Mayor
Hank Williams

Ward I
Bruce Dinger

Ward II
Michael Quilty

Ward III
Brandon Thueson

Ward IV
Tanea Browning

At Large
Rob Hernandez
Vacant

Administration
Chris Clayton, City
Manager
Deanna Casey, City
Recorder

**Community
Development**
Tom Humphrey,
Director

Finance
Steven Weber,
Director

Human Resources
Elizabeth Simas,
Director

**Parks and Public
Works**
Matt Samitore,
Director

Police
Kris Allison Chief

**CITY OF CENTRAL POINT
Study Session
July 16, 2018**

WORK SESSIONS ARE INTENDED FOR DISCUSSION. NO ACTION WILL BE TAKEN ON THE AGENDA ITEMS AND NO DECISIONS WILL BE MADE. NO ORAL OR WRITTEN TESTIMONY WILL BE HEARD OR RECEIVED FROM THE PUBLIC.

I. REGULAR MEETING CALLED TO ORDER – 6:00 P.M.

II. DISCUSSION ITEMS

A. Rogue Disposal Recycling Program Update

B. Community Center Financing Options

III. ADJOURNMENT

Individuals needing special accommodations such as sign language, foreign language interpreters or equipment for the hearing impaired must request such services at least 72 hours prior to the City Council meeting. To make your request, please contact the City Recorder at 541-423-1026 (voice), or by e-mail at: Deanna.casey@centralpointoregon.gov.

Si necesita traductor en español o servicios de discapacidades (ADA) para asistir a una junta publica de la ciudad por favor llame con 72 horas de anticipación al 541-664-3321 ext. 201

Rogue Disposal Recycling

Rethinking Recycling

City of Medford - June 14, 2018
Laura Leebrick & Garry Penning

Global
Recycling
Markets
Crisis

Stats + Data

Where Are
We Headed?



We do that!



**COMMINGLED
RECYCLING ONLY**



Commingled Recycling Baseline Study | March 2018

RESIDENTIAL COMMINGLED RECYCLING (ROLL CART)



BY VOLUME:

52.3% New Commingle Mix
(Cardboard, Tin/Aluminum,
Milk Jugs, Newspaper)

23.1% No Longer Recyclable Materials
(Glass, Mixed Paper, Mixed Plastics)

24.6% TRASH
(Material that has never been
accepted for recycling)

BY WEIGHT:

31.4% New Commingle Mix
47.6% No Longer Recyclable Materials
21.0% TRASH

COMMERCIAL COMMINGLED RECYCLING (FRONT LOAD CONTAINER)



BY VOLUME:

81.4% New Commingle Mix
(Cardboard, Tin/Aluminum,
Milk Jugs, Newspaper)

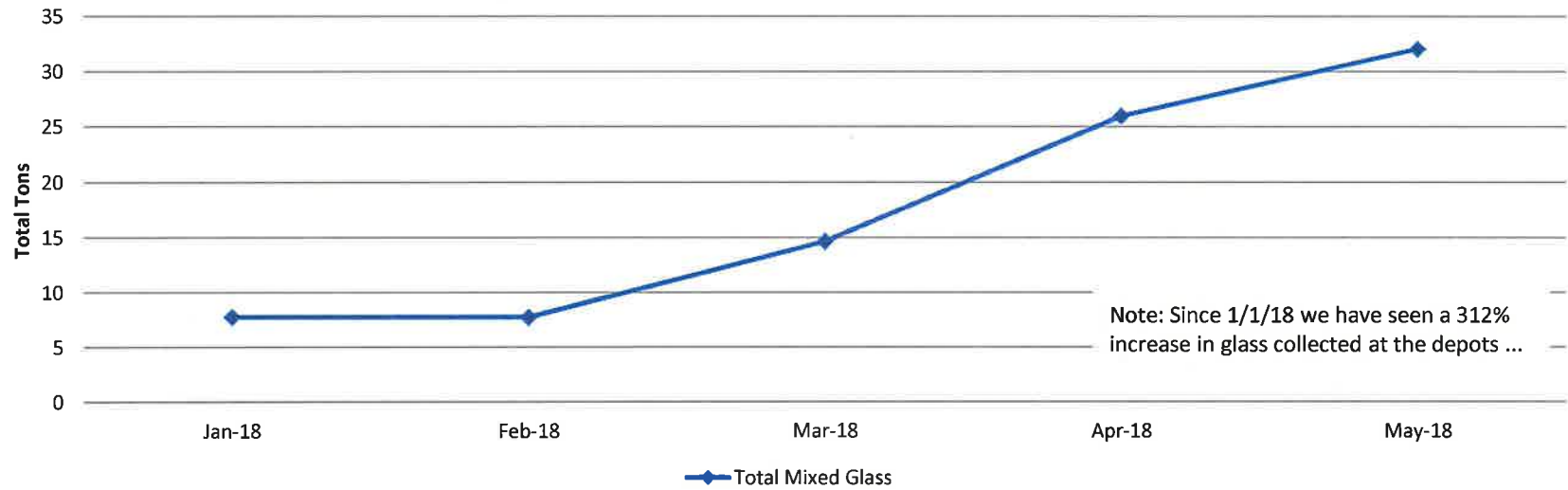
7.1% No Longer Recyclable Materials
(Glass, Mixed Paper, Mixed Plastics)

11.5% TRASH
(Material that has never been accepted)

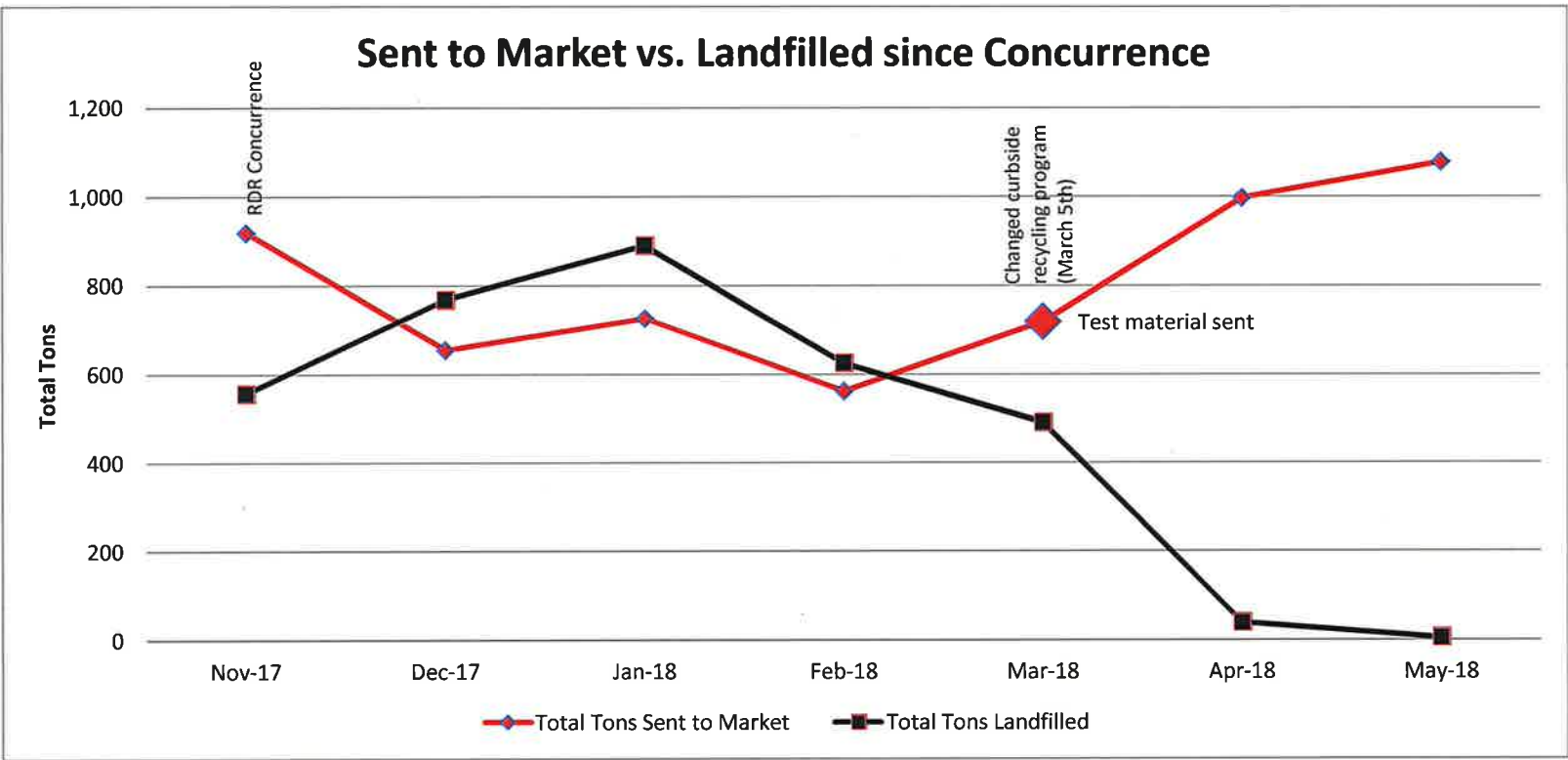
BY WEIGHT:

80.7% New Commingle Mix
9.0% No Longer Recyclable Materials
10.2% TRASH

"Beyond the Curb" (success with glass)

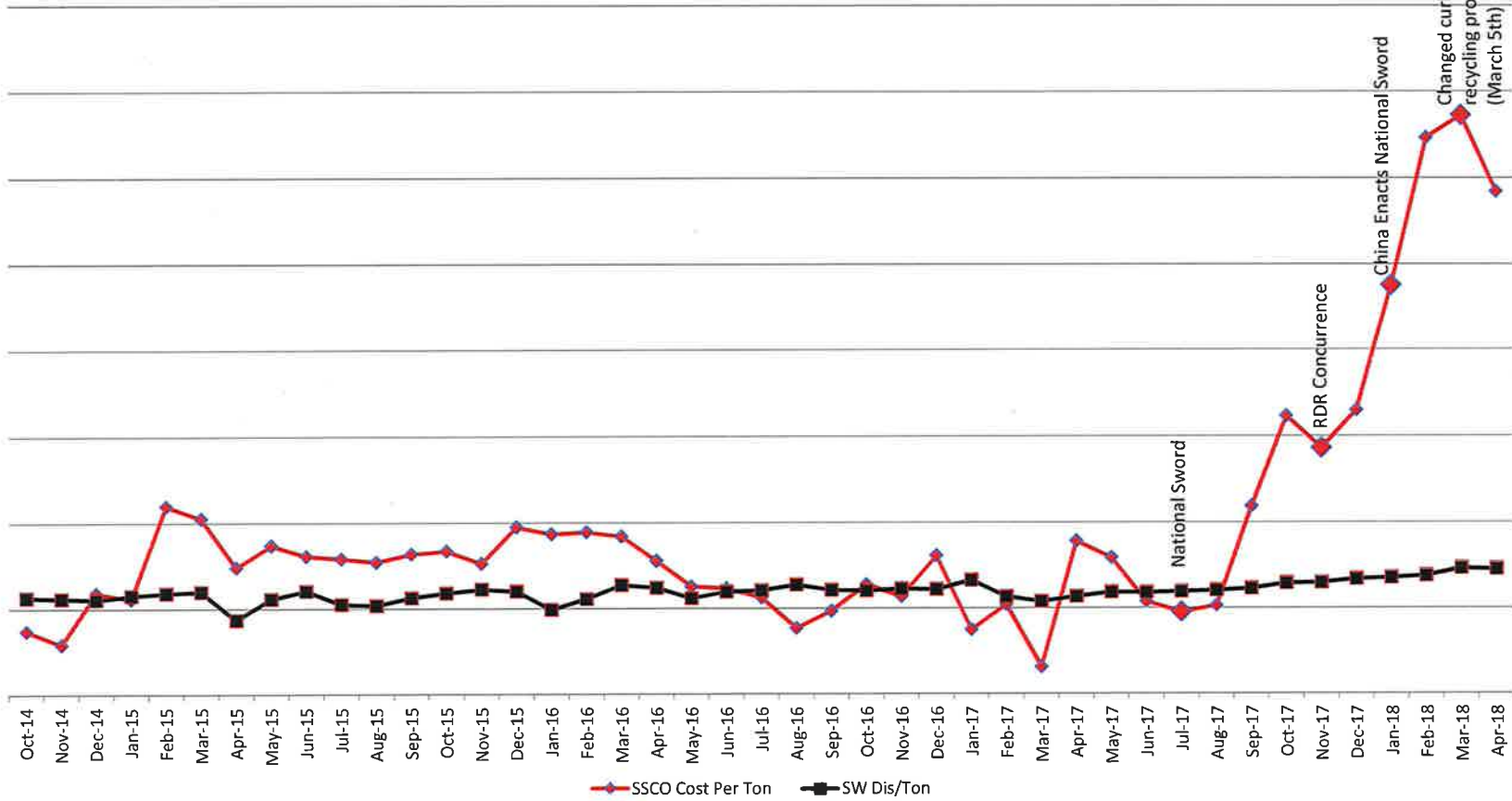


Sent to Market vs. Landfilled since Concurrence



TREND LINE

(cost of managing commingled material to markets vs. cost of disposal)

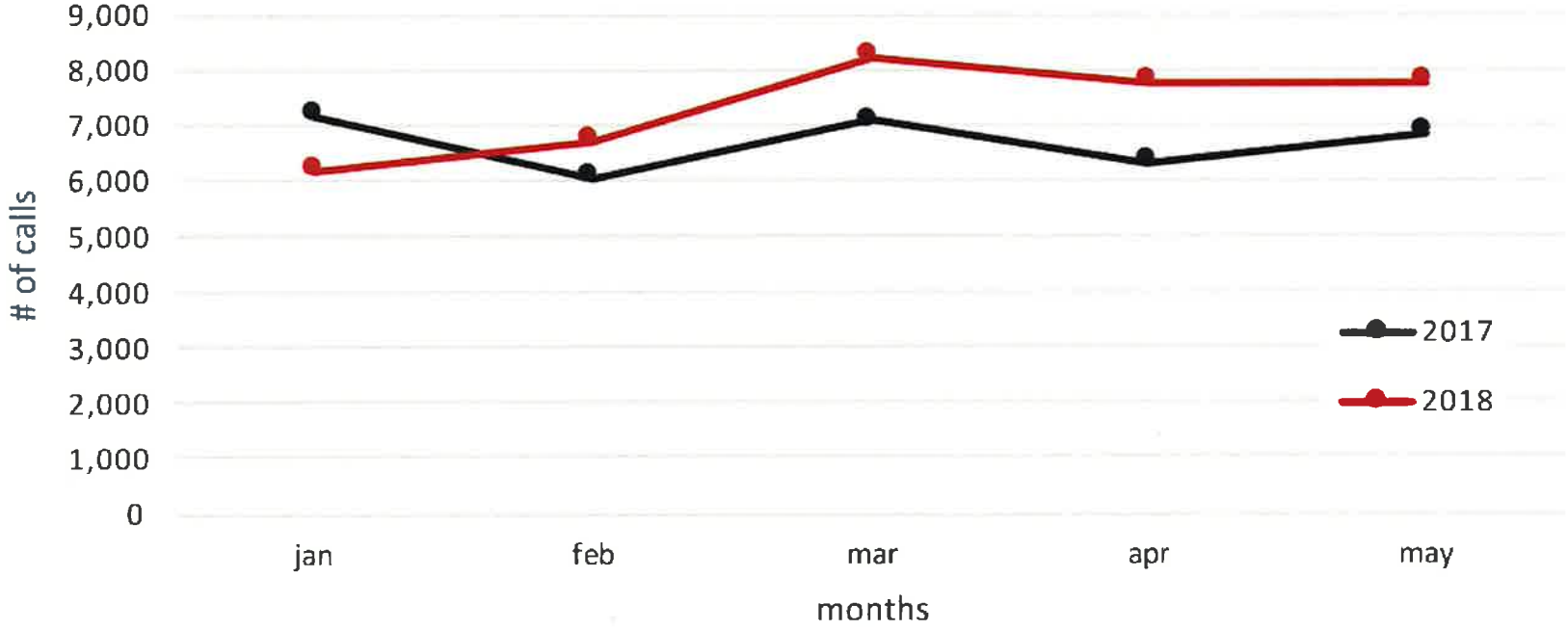


Definition of Recyclable Materials

ORS 468A.100 to 468A.130 and 468A.140 to 468A.175 or any other local government unit responsible for solid waste management.

(19) "Recyclable material" means any material or group of materials that can be collected and sold for recycling at a net cost equal to or less than the cost of collection and disposal of the same material.

Customer Service Phone Calls





roguedisposal.com

June 14, 2018

Dear Valued Customer:

On your most recent recycle collection day, as your red-lid cart was emptied, we noticed items that are not accepted in our recycle program.

Just a friendly reminder, and for continuing education for all our customers, the red-lid commingle cart is for accepted recyclable materials only. Please see the enclosed flyer, for approved recycling materials in our curbside program. If it's not on the "YES List" then please do not put it in the cart. Please notice the recycling options available Beyond the Curb referenced on the flyer, and take advantage of these opportunities as you are able.

Common contaminates we're finding in the red-lid carts are paperboard, and waste plastics. Paperboard, which includes items like cereal boxes, Kleenex boxes and beer/soda boxes, is no longer an accepted material and must go in your black-lid cart. Please do not mistake paperboard with corrugated cardboard, which has the wavy center, and is still recyclable. Any plastic container, other than a standard shaped milk jug, is considered a contaminant and goes in your black-lid cart.

If you have any questions please contact the customer service team. You can also visit our website, www.roguedisposal.com, for answers to your recycling questions. We appreciate the opportunity to serve your trash disposal and recycling needs. Thank you for your effort in keeping your commingle cart free of contamination.

Sincerely,

Customer Service
OFFICE | 541.779.4161

Community Center Funding



July 11, 2018

TO: Honorable Mayor and City Council
FROM: Matt Samitore, Parks & Public Works Director
SUBJECT: Community Center Funding

PURPOSE:

The Ad-Hoc Committee established by the City Council has been discussing and finalizing recommendations for the facility. One of the key components will be funding and what options are available. City staff has met to look at varying options based upon a construction cost of \$5-7 million for the Center.

Review:

Overall bonding usually comes down to three options, general fund or tax increment funding based upon overall debt ratios versus income generated from the fund. The second option is thru rate funded utility funds, i.e. the water fund, street fund, parks fee. The third option is a general obligation bond that is voter approved that would go on the tax rolls. These are similar to what was done by the Library and School District.

At the July 16, 2018 Study Session staff will present options to council on how to potentially fund the community center.

RECOMMENDATION:

No recommendation at this time.