



# CITY OF CENTRAL POINT

*Oregon*

## Council Study Session Agenda Monday, September 20, 2021

- I. Call to Order**
- II. Public Portion**
  - 1. Water Rights Strategy (Clayton)
- III. Adjournment**

**Mayor**  
Hank Williams

**Ward I**  
Neil Olsen

**Ward II**  
Kelley Johnson

**Ward III**  
Melody Thueson

**Ward IV**  
Tanea Browning

**At Large**  
Rob Hernandez

**At Large**  
Michael Parsons

Individuals needing special accommodations such as sign language, foreign language interpreters or equipment for the hearing impaired must request such services at least 72 hours prior to the City Council meeting. To make your request, please contact the City Recorder at 541-423-1026 (voice), or by e-mail to [Deanna.casey@centralpointoregon.gov](mailto:Deanna.casey@centralpointoregon.gov).

Si necesita traductor en español o servicios de discapacidades (ADA) para asistir a una junta pública de la ciudad por favor llame con 72 horas de anticipación al 541-664-3321 ext. 201



# Water Rights Strategy for Partner Water Providers

Medford Water Commission, and Cities of Ashland, Central Point, Eagle Point, Jacksonville, Phoenix and Talent

## Historical Perspective

- Medford Water Commission – Formed by City Charter Change 1922
- Charter Allows MWC to Sell only “Surplus Water”
- 1930 – 1960 Added 3 Cities (Eagle Point, Central Point and Eagle Point) – “Surplus Water Supply Agreements”
- In 70’s Realized may not have Surplus 2030-2040
- Cities of Phoenix, Talent & Ashland Req’d to Obtain Water Rights when Added - “Treat and Transport Water Supply Agreements”
- In mid 90’s, MWC meet with Cities (J’ville, E. Point and C. Point) to Determine Best Method to Proceed – Agreed to have Cities Obtain Own Water Rights.
- All Cities Have Obtained Own Water Rights – Treat and Transport Agreements

## Overview

- Duff WTP
  - 20 water rights
  - Held by MWC and 6 Partner Cities
- Certification must be strategic
- Other benefits of coordination
  - Redundancy / flexibility
  - Long-term water supply
  - Efficient use of public resources

## Central Points Water Rights

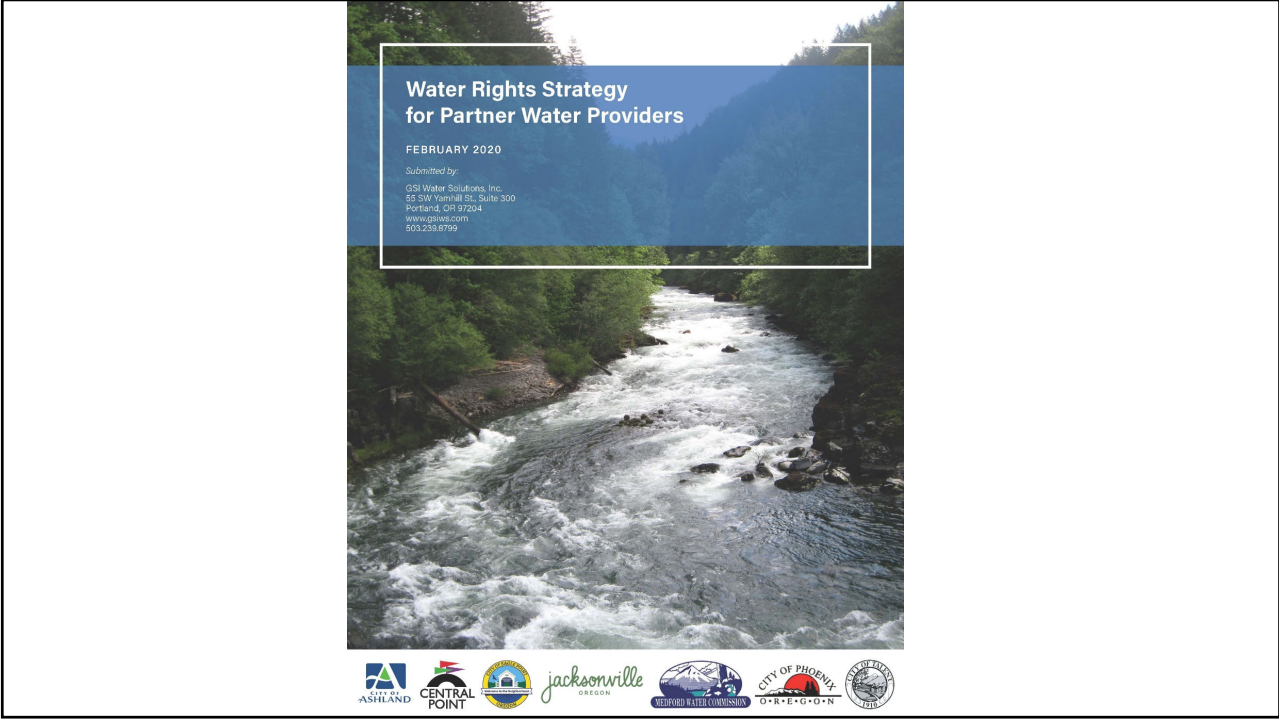
- Certified Water Rights
  - Certificate 93754 – 1.13 cfs
  - Certificate 93755 – 1.13 cfs
  - Certificate T-10527 – 1.2 cfs
- Water Rights “Under Permit”
  - Certificate T-9900 - 1.846 cfs

## Project Activities

- Confirm understanding of Partners' water rights
- Project Partners' water demands
- Compare Partners' water rights to demands
- Describe governance structures for water sharing groups
- Develop water rights strategy
- Develop draft IGA

## Current Status

- Partners are finalizing draft Intergovernmental Agreement (IGA) for future approval by governmental bodies.



Attachment: Central Point WR Presentation Sept 20\_9.16.2111337 (1463 : Water Rights Strategy)

### MWC Water Rights at Rogue River Intake (Duff WTP)

Water Right	Source	Rate cfs (mgd)
Certificate 86832	Rogue R.	60.85 (39.3)
Permit S-23210	Rogue R.	39.15 (25.3)
Permit S-54935	Big Butte watershed	"All remaining unappropriated waters..."

### Partner Cities' Water Rights at Duff WTP

City	Rate (cfs)	Volume (AF)
Ashland	N/A	1,000
Central Point	5.306	1,928.8
Eagle Point	6.27	1,860.94
Jacksonville	N/A	600
Phoenix	8.1	1,000
Talent	N/A	1,292

# Comparison of Water Rights and Water Demands

**MWC's Projected Demands**

	2030	2040	2070
MDD Rate (mgd)	53.53	59.16	73.08
Volume (MG)	9,629	10,682	13,280



**Partner Cities' Water Demands (MDD)**

City	2030 (mgd)	2040 (mgd)	2070 (mgd)
Ashland	3.0	3.0	3.0
Central Point	8.37	9.76	15.01
Eagle Point	4.52	5.00	6.74
Jackson-ville	1.88	2.16	3.28
Phoenix	2.63	3.13	5.07
Talent	2.45	2.82	4.21

**Partner Cities' Water Demands (Volume, May-Sept)**

City	2030 (MG)	2040 (MG)	2070 (MG)
Ashland	326	326	326
Central Point	791	922	1418
Eagle Point	445	453	610
Jackson-ville	202	232	353
Phoenix	338	402	651
Talent	205	236	352

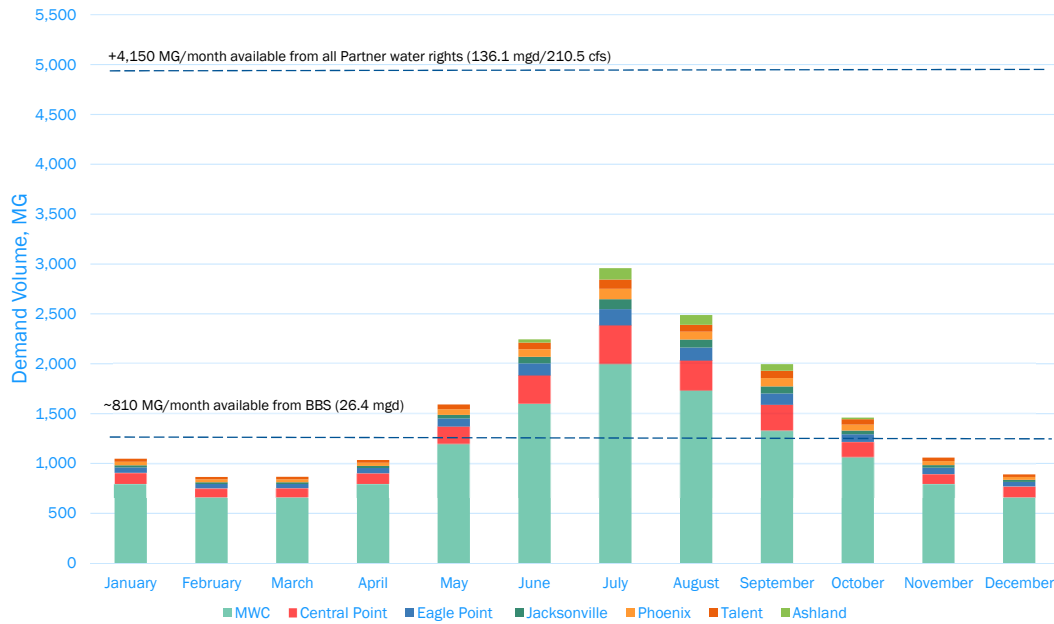
Attachment: Central Point WR Presentation Sept 20\_9.16.2111337 (1463 : Water Rights Strategy)

### Outside Customer Projected Demands (Volume, May-Sept)

	2030 (MG)	2040 (MG)	2070 (MG)
	922	1,160	1,492

Attachment: Central Point WR Presentation Sept 20\_9.16.2111337 (1463 : Water Rights Strategy)

2070 Monthly Demand Volumes (Medium Scenario)



# Water Rights Strategy

## What's Changed

- Addition of New Water Rights
  - Partner Cities Water Right Acquisition
  - MWC's "Legislative Withdrawal Water Right
- Region's 2070 Demand Forecast is Significantly Less than Current Water Rights
- New Challenge to Region is to Protect All of Our Current Water Rights for Future

## Water Rights Strategy

- Water rights certification strategy
- Water sharing and governance strategy

## Certification Factors Considered

- Development deadline
- Type of water right (permit, transfer)
- Projected water demand
- Water right limitations
- Equity
- Goal to minimize transactions

# Certification Strategy

- Generally certificate Partner Cities' water rights 1<sup>st</sup>
  - Near-term development deadlines
  - (2035 or sooner)
- Certificate MWC permit later
  - Starting at 100 cfs capacity
  - Development deadlines – 2050 & 2056
- Exception – “volume only” rights

Attachment: Central Point WR Presentation Sept 20\_9.16.2111337 (1463 : Water Rights Strategy)

Water Rights Strategy for Partner Water Providers

Table 4. Water Right Strategy Summary for Partners' Water Rights at Duff WTP with Water Sharing

Step	Action	Rate (cfs)	Development Deadline	Total Rate in Water Right Certificate Status (cfs)
<b>Duff WTP - Existing Capacity – 70 cfs</b>				
<b>Current Status - Existing Certificates and Pending COBUs</b>				
	Central Point's Certificate 93754	1.13	N/A	65.26
	Central Point's Certificate 93755	1.13	N/A	
	Eagle Point's Certificate 88552	0.90	N/A	
	Eagle Point's Certificate 89854	1.25	N/A	
	Jacksonville's Certificate 97360	No rate (400 AF)	N/A	
	MWC's Certificate 86832	60.85	N/A	
	Talent's Certificate 91134	No rate (533 AF)	N/A	
	Central Point's Transfer T-10465	1.20	10/1/2014	
	Eagle Point's Transfer T-10527	0.50	10/1/2013	
	Phoenix's Permit S-47872 (COBU on hold)*	5.0	10/1/2001	
<b>Transactions</b>				
1	Certificate Central Point's Transfer T-9800	1.840	10/1/2030	68.956
2	Certificate Eagle Point's Transfer T-10614	1.15	10/1/2030	69.956
3	<b>Certificate Ashland's Permit S-54337*</b>	No rate (1,000 AF)	9/7/2021	<b>69.956</b>
	<b>Total at this capacity</b>			<b>69.956 cfs</b>
<b>Duff WTP Capacity – 100 cfs in approximately 2028</b>				
4	<b>Certificate Jacksonville's Permit S-54974*</b>	No rate (200 AF)	11/19/2035	<b>69.956 cfs</b>
5	<b>Certificate Talent's Permit S-53898*</b>	No rate (759 AF)	10/1/2065	<b>69.956 cfs</b>
6	Certificate Phoenix's Permit S-47672	5.0	10/1/2001	74.956
7	Certificate Eagle Point's Transfer T-10960	1.77	10/1/2030	76.726
8	Certificate Eagle Point's Transfer T-12221	0.7	10/1/2030	77.426
9	Certificate Phoenix's Permit S-52850	3.1	10/1/2030	80.526
10	Partially certificate MWC's Permit S-54935 (estimated rate)	19.474	10/1/2056	100
	<b>Total at this capacity</b>			<b>100 cfs</b>
<b>Duff WTP Capacity – 131 cfs in approximately 2036</b>				
11	Partially certificate MWC's Permit S-23210	31	10/1/2050	131
	<b>Total at this capacity</b>			<b>131 cfs</b>
<b>Duff WTP Capacity – 162 cfs (TBD)</b>				
12	Partially certificate remainder of MWC's Permit S-23210	8.15	10/1/2050	139.15
13	Partially certificate MWC's Permit S-54935 (estimated rate)	22.85	10/1/2056	162.0
14	Extend MWC's Permit S-54935 as needed		10/1/2056	
	<b>Total at this capacity</b>			<b>162.0 cfs</b>
<b>Duff WTP Capacity – 193 cfs (TBD)</b>				
15	Certificate remainder of MWC's Permit S-54935 (estimated rate)	7.676	10/1/2056	169.676
	<b>Total at this capacity</b>			<b>169.676 cfs</b>

Notes  
 \* These steps assume that certifying the "volume only" water rights would not negatively impact the ability to certificate the other Partner water rights, and all elements of seeking a certificate can be met.  
 AF: acre-feet      cfs: cubic feet per second  
 COBU: claim of beneficial use      MWC: Medford Water Commission

## Water Sharing Strategy - Goals, Interests, Priorities

- Strategically manage water rights at Duff WTP
- Ensure long-term supply for Partners
- Eliminate unnecessary W.R. purchases
- Partners retain ownership of W.R.s
- Opportunity to obtain value for W.R.s
- Treat “outside customers” equitably

## Recommended Supply Sharing

- Recommended approach
  - Meets goals, interests, priorities
  - Meet near- and long-term goals
  - Does not jeopardize water rights
  - Allow pooling of water rights
- MWC and Partner Cities enter IGA for regional water supply

## Recommended Supply Sharing

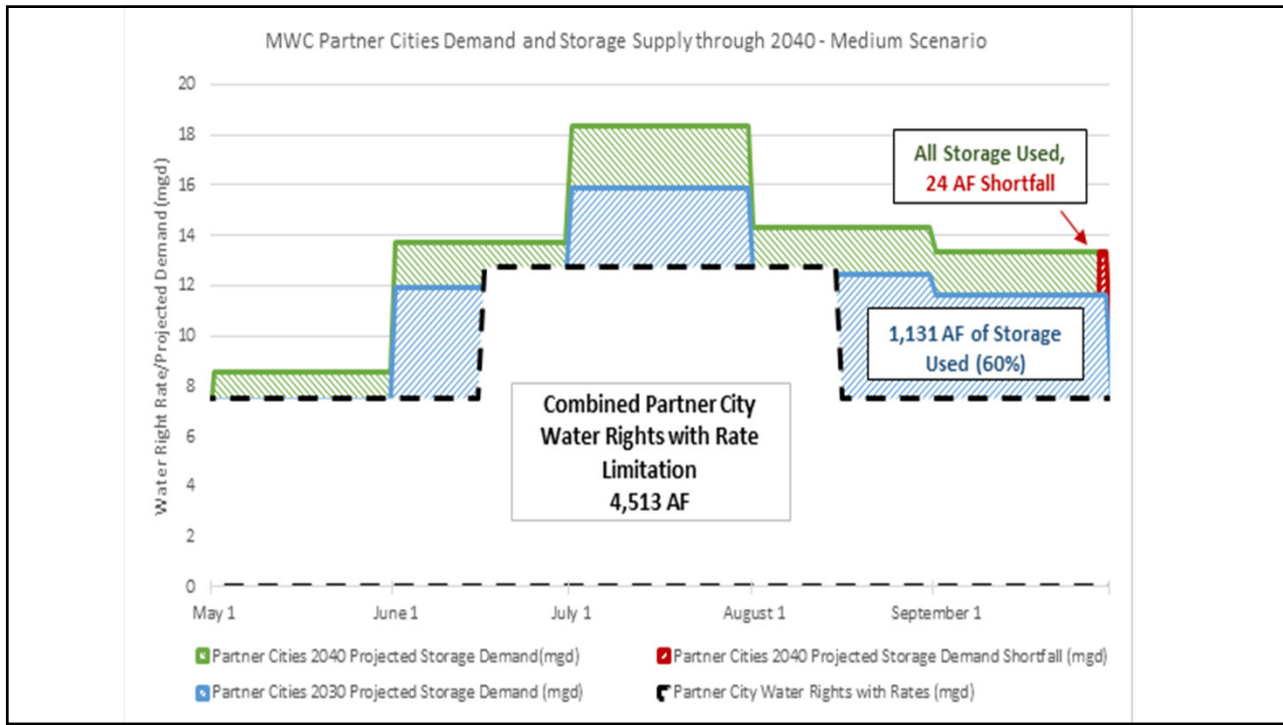
- Two Phases to IGA with MWC and Partner Cities
  - At current WTP capacity – until ~2028
  - When WTP capacity increases to 100 cfs

## Recommended Supply Sharing

- At current WTP capacity, Partner Cities & outside customers share supply
  - MWC tracks water use vs water rights
  - Follow strategy to request water right certificates
  - Continue developing collaboration

## Recommended Supply Sharing

- At WTP capacity of 100 cfs Partner Cities/Outside Customers will retain Treat & Transport Agreement with MWC
  - Water rights placed into regional water supply pool
    - Cities retain ownership
    - Opportunity to withdraw from group
  - Compensation for Cities' water rights used and O&M costs per IGA





## Reasons for Coordination

- Coordinated management to secure certified water rights at Duff WTP
- Opportunity to share water supplies
- Eliminate need for additional rights
- Supply redundancy / flexibility

Next Steps

## Develop a Water Sharing Agreement - IGA

- Partners seek concurrence to develop scope of work for IGA - Complete
- Develop scope of work - Complete
- Develop draft IGA – Final Stage
- Finalize IGA and obtain approval from governmental bodies
  - Cost sharing of operating costs when partner cities exceed current water rights
    - Determine 5 year running average O&M cost/acre feet
    - Annual report outlining O&M cost/water utilization/cost allocation

Questions?