



City of Central Point
Development Commission
Study Session

Members: Hank Williams
Allen Broderick
Bruce Dinger
Tanea Browning
Mike Quilty
Brandon Thueson
Rick Samuelson

Monday, October 3, 2016
6:00 P.M.

Central Point
Council Chambers
140 S. 3rd Street
Central Point, Oregon

Staff Liaison: Chris Clayton

Meeting time, date, or location may be subject to change. Please contact the City Recorder at 541-423-1026 for additional information.

I. MEETING CALLED TO ORDER – 6:00 p.m.

II. ROLL CALL

III. APPROVAL OF MINUTES

IV. DISCUSSION ITEMS

- A. East Pine Streetscape Project
 - i. Objective of Study Session – Review final streetscape design
 - 1. On-Street Parking
 - 2. Pedestrian Lights/Illumination Plan;
 - 3. Street Trees;
 - 4. Bulb-outs, Planters, and Pots
 - 5. Streetscape Accessories (benches, tree grates, etc.)
 - 6. Phasing Options
 - ii. Next Steps
 - 1. Preliminary Cost Estimate and Financing Options Oct./Nov.)
 - 2. Stakeholder Meeting (Oct./Nov.)
 - 3. Phasing (Nov.)
 - 4. Final Design (Fall 2017)
 - 5. Final Engineering, Phase I (Winter 2017)

V. BUSINESS

- A. None

VI. ADJOURNEMENT



STAFF REPORT

October 3, 2016

AGENDA ITEM: V-A

Consideration of final East Pine streetscape design

STAFF SOURCE:

Don Burt, Planning Manager

BACKGROUND:

Based on the Development Commission's comments at the August 15th Study Session staff and the consultant have completed (80%) the final streetscape design for East Pine. What remains to be discussed is the use of planters/pots on the corners, which will be the primary point of discussion at the study session.

1. **Street Trees.** Four street trees per block-face. The proposed trees will be either the chanticleer pear (left image) or the hornbeam (right image), both of which are columnar in shape. The location of the street trees will not impact on-street parking. Approximate distance between trees is 50 feet.

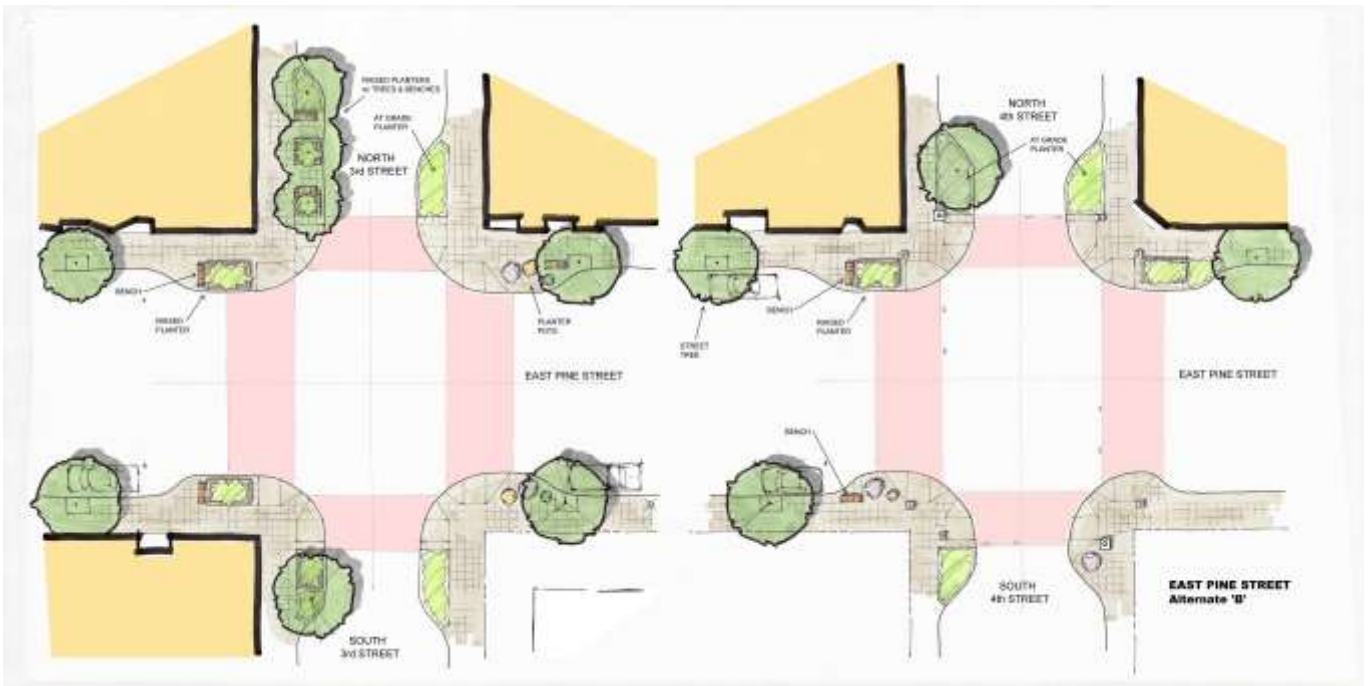
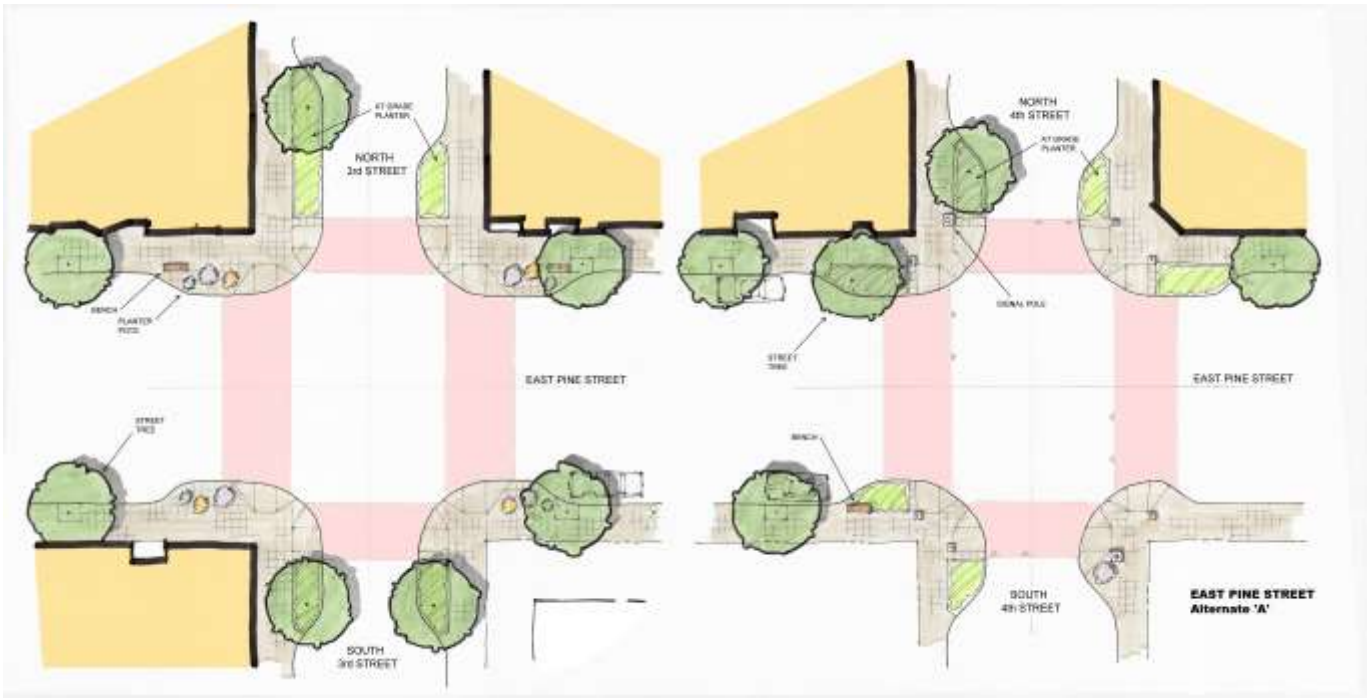


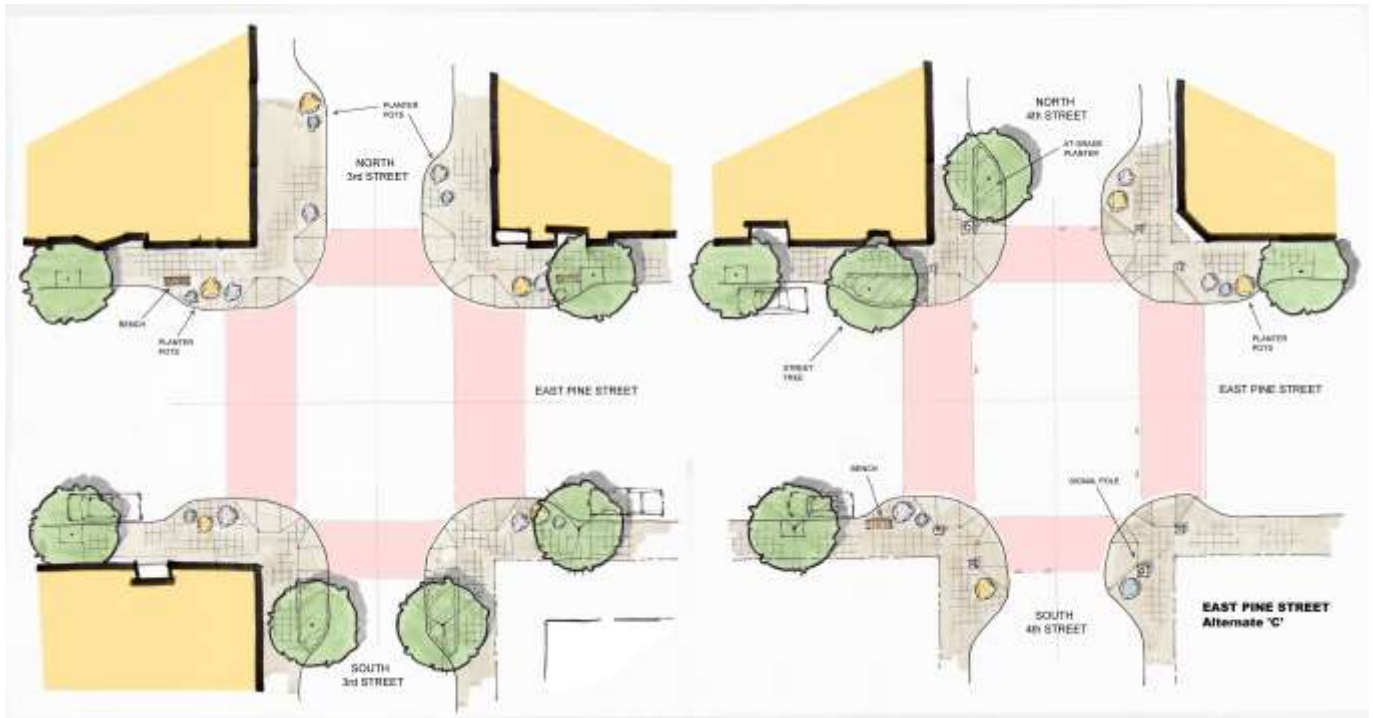
2. **Street Lights.** Three single luminaire street lights on 22 foot poles (same as currently used but with a single luminaire) with the capability to support hanging flower baskets and banners are proposed per block-face. As with the street trees the street lights will not impact on-street parking. Street lights will be set approximately 50 feet apart. Each intersection corner will have a 22 foot double luminaire street light. Illumination plans illustrating adequacy of light will be presented at the study session.
3. **Planter NW corner of Third.** Per prior discussion this planter has been reduced in size to sa
4. **Signalized Pedestrian Crosswalk.** Previously the preferred location of the signalized pedestrian crosswalk was at 7th Street. After review and input by the City's traffic engineer it was recommended that the signalized pedestrian crosswalk be moved to 6th Street. The justification was the pedestrian pattern of usage supports this location as well as the bus stop. A future signalized intersection at 7th street has not been ruled-out, but is a matter of demand justification/timing warrants.

5. **Planters/Pots/Furniture.** Attached are several images illustrating the actual use of planters and pots at intersections. Most of the study session will be directed to finalizing the use of planters/pots. The landscape architect will be present to guide you through the options.



The following three illustrations are the planter/pot options with bench locations that will be discussed by the landscape architect on Monday night.





6. **Phasing.** It is recognized that the preference is to complete the project in a single phase, subject to adequacy of funding. However, a brief discussion will be made by the engineering consultant addressing phasing options.
7. **Sidewalk Pattern.** As discussed the sidewalk material concrete and the pattern will be 2'x2' with tight joints. The sidewalk pattern will run through the wheelchair ramps.
8. **Crosswalk Design.** At the signalized intersections (including the pedestrian signal) it is proposed to use concrete crosswalks using the sidewalk 2'x2' pattern

EXHIBITS/ATTACHMENTS:

Additional drawings to be distributed at the study session.

ACTION:

Discussion and direction

RECOMMENDATION:

Authorize staff to complete drawings and proceed with scheduling a Stakeholder/Open House meeting for final public input.