



Erosion Prevention and Sediment Control

Plan Submittal Requirement for Sites

For Sites 7,000 Sq. Ft. to 1 Acre

Overview

DEQ requires the City to monitor all erosion and sediment runoff that leaves construction sites in the City. This permit is to ensure that the protection that is put in place will keep any sediment or pollutants from getting into the City's storm drain system and creeks.

To expedite your permit process, follow this guide to preparing an Erosion Prevention and Sediment Control (EPSC) site plan showing how soil erosion will be minimized and sediment contained on-site during residential construction activities.

What do I need to submit?

You must submit a completed *Erosion Prevention and Sediment Control* permit application along with 2 copies of an EPSC site plan. Follow the checklist below to create the EPSC site plan.

EPSC Site Plan Checklist

Start with a copy of your site plan, showing the following:

- Property lines, easements, and north arrow
- Existing and proposed contour lines at 2-foot intervals
- Footprint of all structures (including decks, porches, retaining walls, etc.)
- Location of driveway and sidewalks

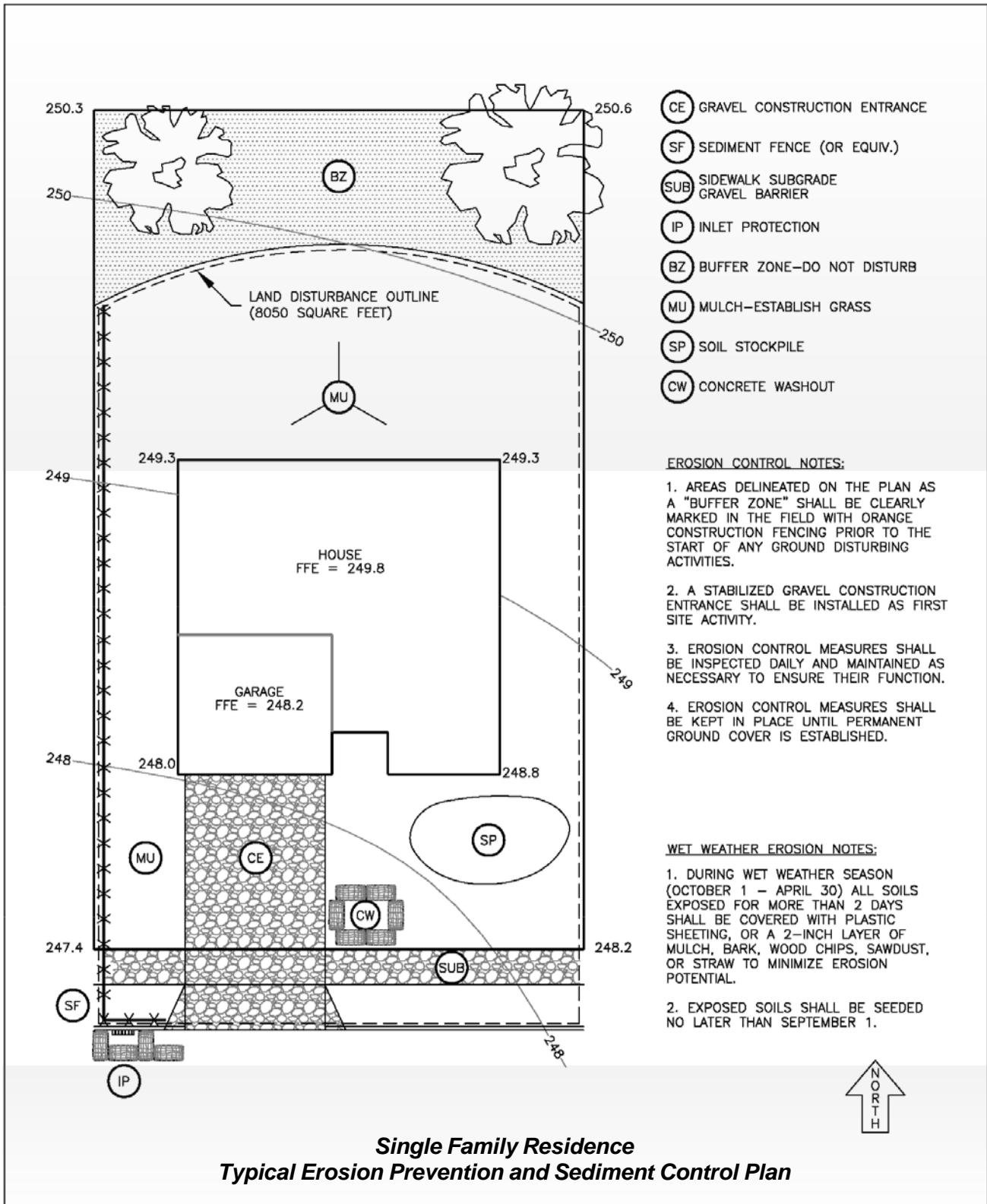
Add the following EPSC information:

- Gravel construction entrance/exit (*20-foot length x 20-foot width minimum, 8-inches of gravel*).
- Location for any temporary stockpiling of soil during construction.
- Outline all areas of land disturbance on the site, including areas that will be cleared, graded, or excavated during any phase of construction.
- Place erosion control measures on the downhill side of all disturbed areas on the construction site.

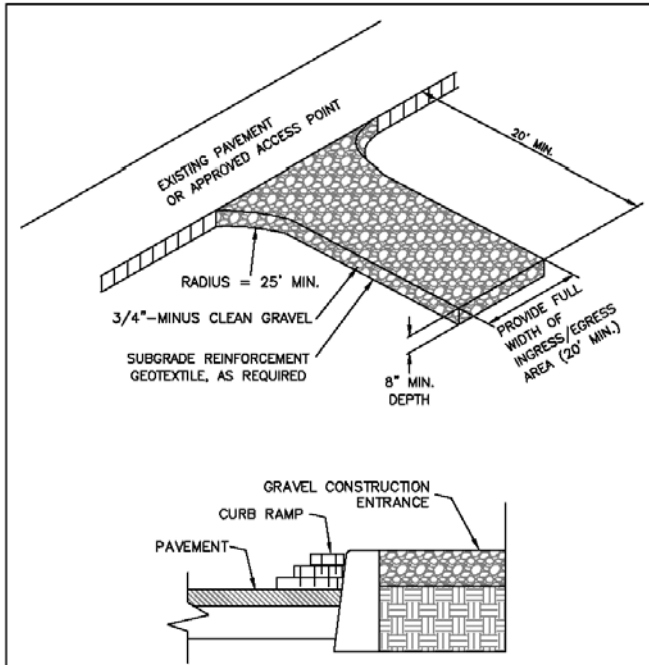
Appropriate measures include:

- Sediment fence
 - Rice straw/coconut fiber (coir)/excelsior wattle
 - Excavated sidewalk (*4-foot width x 4-inch depth minimum for slopes < 10%, 2-inches of gravel*)
 - Mulch or gravel berm
 - Undisturbed buffer zone
- Provide curb gutter filtration and inlet protection for all downhill storm sewer inlets.
- Appropriate measures include:
- Biobags (*for curb inlets, catch basins, and area drains in low-traffic areas*)
 - Curb inlet sediment filters (*for curb inlets in high-traffic areas*)
 - Provide a concrete wash-out facility for all concrete truck, mortar, and concrete tool wash out:
 - Wash-out facilities must be clearly marked and located away from the street, storm sewer inlets, and water quality facilities.

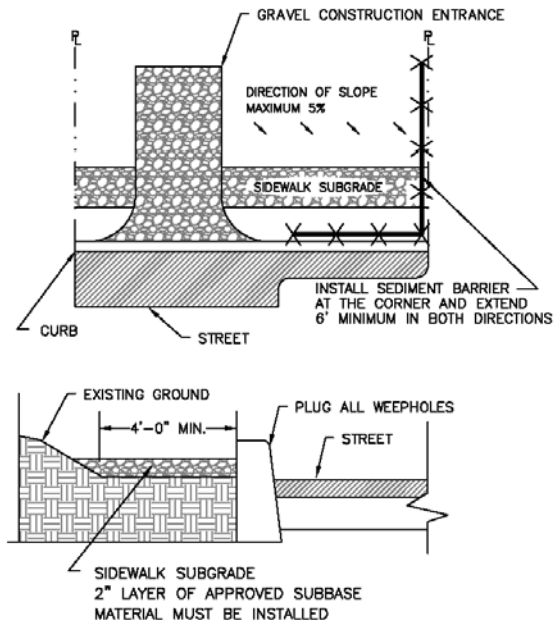
EPSC site plan example



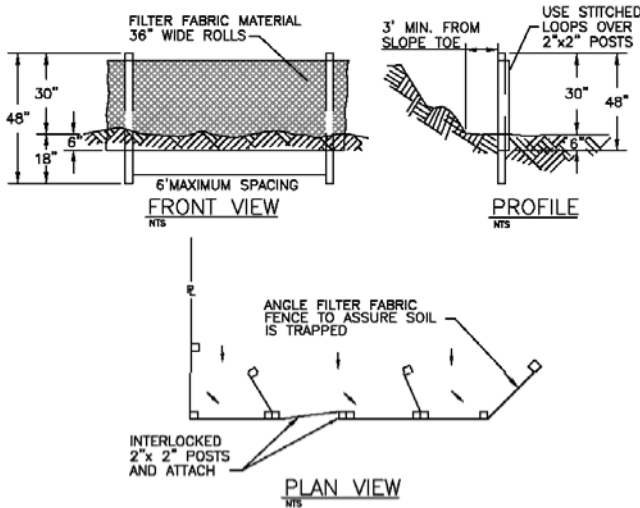
Commonly used residential erosion control measures



Residential Gravel Construction Entrance

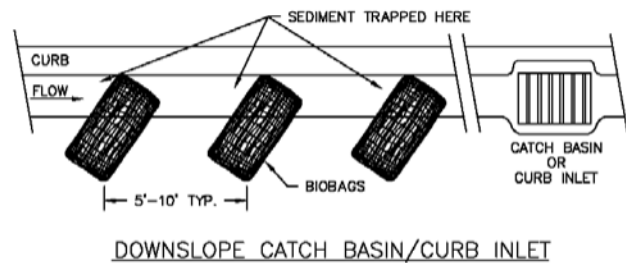
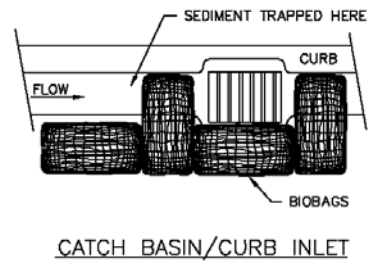


Excavated Sidewalk Gravel Barrier



- NOTES:
1. EXCAVATE A 4" X 8" TRENCH.
 2. USE 36" WIDE FILTER FABRIC WITH STITCHED STAKE POCKETS.
 3. STAKE WITH 2" X 2" FIR, PINE, OR STEEL FENCE POSTS.
 4. POSTS TO BE INSTALLED ON UPHILL SIDE OF SLOPE.
 5. BURY BOTTOM OF FILTER FABRIC 6" VERTICALLY BELOW FINISHED GRADE.
 6. WHERE JOINTS ARE NECESSARY, INTERLOCK POSTS.
 7. BACKFILL AND COMPACT BOTH SIDES OF FILTER FABRIC IN TRENCH.

Sediment Fence



Downslope Catch Basin/Curb Inlet

BioBag Inlet Protection

Standard permit conditions

1. **Prior to any ground disturbing activity on the site, an initial inspection by City staff is required.** Erosion Prevention and Sediment Control (EPSC) measures should be in place prior to the inspector arriving. Call Mike Blake at (541) 414-7365 to schedule your inspection.
2. EPSC measures must be constructed in conjunction with, and prior to, all clearing and grading activities and in a manner as to ensure that sediment and sediment-laden water does not enter the drainage system, roadways, or violate applicable water quality standards.
3. EPSC measures shown on the plans are minimum requirements for anticipated site conditions. During the construction period, the EPSC measures shall be upgraded as needed for unexpected storm events and to ensure that sediment and sediment-laden water does not leave the site.
4. EPSC measures shall be inspected daily by the permit holder, and maintained as necessary to ensure their function.
5. Stabilized gravel construction entrances shall be installed at the beginning of construction and maintained for the duration of the project. Additional measures may be required to ensure that all paved areas are kept clean for the duration of the project.
6. EPSC measures shall be kept in place until permanent ground cover is established.
7. All exposed soil must be permanently stabilized against wind and water erosion before the EPSC permit can be closed. Once the site is stabilized, schedule a final inspection by calling (541) 414-7365. Permanent soil stabilization includes landscaping, seeding, or covering exposed soil with a minimum 2-inch layer of bark or wood chips. For residential construction, where areas of the lot have a final grade less than 10% slope, a 5-foot wide strip of perimeter stabilization may be substituted in lieu of complete site stabilization.

Where can I get assistance?

We are here to help you. Staff is typically available from 8:00 am to 4:00 pm weekdays to answer your questions by phone (541) 423-1030 and at the Public Works front counter in City Hall, 140 S 3rd Street. We encourage you to call and make arrangements for a free on-site consultation.

For more information

City of Central Point

Public Works

*Department 140 S 3rd
Street.*

*Central Point Oregon
97502*

(541)664-3321

Fax (541) 664-6384

*www.centralpointoregon
.gov*